



July - September 2001

The Rail Splitter

Official Publication of the
Lincoln Trail Area Development District
613 College Street Road, P.O. Box 604
Elizabethtown, KY 42702-0604
abelink@ltadd.org

VOLUME 24

Nelson County Project Receives National Innovation Award

The NELCO-Bluegrass State Skills Corporation project began as a result of the closing of two long-time companies in Bardstown, Kentucky. The Nelson County Training Consortium (NELCO) decided to be proactive and formed a collaborative partnership with several agencies to respond to the needs of the workers. NELCO was awarded a \$234,000 grant through the Bluegrass Skills Corporation along with a \$50,000 contribution from Nelson County Fiscal Court. Under the guidance and with the assistance of those organizations, these funds were used to provide short-term training, college tuition reimbursement and on-the-job training for more than 120 workers. Results of the project indicate that 70% of the dislocated workers have obtained employment. This unique partnership has received favorable statewide recognition and has possibly set a precedent that, in the future, may lead to similar approaches in helping communities deal with the loss of jobs.

The project was nominated and accepted for the National Association of Development Organizations (NADO) Innovation Award. The Award was presented by William Hess, President of NADO to Nelson County Judge/Executive Dean Watts and Wendell Lawrence, Executive Director of Lincoln Trail Area Development District, at the NADO Conference in San Antonio, Texas, in August. The theme of this year's conference was "Strengthening Regional Economics". Other Lincoln Trail ADD Board members in attendance were Larry Gatewood, Chairman from Breckinridge County, Paul Steenbergen, 2nd Vice-Chairman from Grayson County, William Corum, citizen member from Meade County, Breckinridge County Judge/Executive Tom Moorman, and Meade County Judge/Executive Mark Brown.



The project was nominated and accepted for the National Association of Development Organizations (NADO) Innovation Award. The Award was presented by William Hess, President of NADO to Nelson County Judge/Executive Dean Watts and Wendell Lawrence, Executive Director of Lincoln Trail Area Development District, at the NADO Conference in San Antonio, Texas, in August. The theme of this year's conference was "Strengthening Regional Economics". Other Lincoln Trail ADD Board members in attendance were Larry Gatewood, Chairman from Breckinridge County, Paul Steenbergen, 2nd Vice-Chairman from Grayson County, William Corum, citizen member from Meade County, Breckinridge County Judge/Executive Tom Moorman, and Meade County Judge/Executive Mark Brown.



COMMUNITY DEVELOPMENT

Water Management Planning

The Water Management Planning Council (WMPC) met on July 16, 2001. The purpose of the meeting was to inform Council members of the statewide projections for water projects. There were 823 0-2 year projects submitted statewide for a total of \$921,450,102. This figure represents the total project costs of all water projects, not the total amount requested from KIA. The Council is also in the process of amending the County Water Supply Plans to reflect proposed projects for each system. The next Water Management Planning Council meeting is scheduled for October and will focus on the wastewater component of the Governor's Initiative.

Watershed Planning Workshop

On September 18, 2001, the Water Management Coordinator, Emily Lee, conducted a Watershed Planning Workshop for WMPC members, city and county officials. Emily attended a workshop that was conducted by the Center for Watershed Protection at the University of Louisville. This workshop was held to train individuals to conduct individual Watershed Protection Workshops in their regions and ultimately to develop and implement a Watershed Protection Plan. LTADD held an introductory workshop to watershed planning and covered specific topics including impacts of urbanization, eight tools of watershed protection, and better site design. If anyone is interested in developing a watershed protection plan or is interested in general information concerning watershed protection plans, contact the Lincoln Trail ADD at (270) 769-2393.

LTADD Highway Safety Committee

The Lincoln Trail ADD Highway Safety Committee has been working the past few months in preparation for the Governor's Highway Safety Summit scheduled for November 1 and 2 in Lexington. The committee has completed an issue identification process and has identified three main issues of focus. The committee has also developed recommendations of projects and/or programs to be implemented to address the safety issues. The safety issues and projects/programs are as follows:

Issues

1. Seat belt usage.
2. Driver education/awareness (including beginning/young drivers).
3. Lack of shoulders on 2-lane rural roads.

Recommended Projects/Programs

1. Support primary seat belt law.
2. Explore local primary seat belt ordinances.
3. Public awareness/education campaign (seat belt usage, alcohol, speed, driver attentiveness).
4. Implement comprehensive graduated drivers licensing system.
5. Provide recommendations and encourage KYTC and local governments to construct shoulders on 2-lane rural roads.

These issues and programs will be presented to the public at the Governor's Highway Safety Summit. The Area Development Districts will present their programs during the general session of the Safety Summit on November 1 from 10:15-11:45 a.m. For more information concerning LTADD's Highway Safety program or the Governor's Highway Safety Summit please contact Mike Skaggs, Transportation Planner at (270) 769-2393 or mskaggs@ltadd.org.

Area Development Fund Presentations

The ADF provides funding for capital projects that contribute to a city or county's community or industrial development. Funding for the ADF grant program comes from the Commonwealth's coal severance tax and the monies are appropriated by the Kentucky General Assembly. The program is administered by the Department for Local Government and the Commonwealth's 15 Area Development Districts.



Dean Nelson, LTADD Public Administration Specialist, presented **Mayor James P. Embry** and the Caneyville City Commission with a \$3,085.37 ADF check for the purpose of resurfacing the walking track at the Caneyville City Park.



State Representative Dottie Sims presented **Mayor Darrell Florence** and the Hodgenville City Council with a \$2,123.00 ADF check for improvements to the soccer fields at the LaRue County Parks and Recreation Department.



Mike Skaggs, LTADD Transportation Planner, presented **Mayor Sam Hodges** and the Clarkson City Commission with a \$3,085.37 ADF check for the provision of electric services to the Clarkson City Park.



Dean Nelson, LTADD Public Administration Specialist, presented **Mayor Tessie Cecil** and the New Haven City Commission with a \$15,134.43 ADF check for the upgrade of computer software and hardware in the New Haven City Hall.



Dean Nelson, LTADD Public Administration Specialist, presented Judge-Executive **Tommy Turner** and the LaRue County Fiscal Court with a \$7,751.52 ADF check for the purchase of a sheriff's cruiser.

Training Mandated by House Bill 55

During the 2000 session, the Kentucky General Assembly passed House Bill 55 requiring planning commissions, boards of adjustment members, and professional planners to acquire annual continuing education training.

To provide opportunities for fulfilling the HB55 training requirements, the Lincoln Trail Area Development District and the Lincoln Trail Regional Planning Council will provide quarterly training workshops. Each workshop will be held at the LTADD office and during the evening to enable citizen members of planning commissions and boards of adjustment to receive training without interfering with their regular employment.

The workshop sessions will be conducted by LTADD staff members, Regional Planning Council members, guest speakers, or combination of speakers.

LTADD held the first workshop on September 12. Forty-five attendees participated in discussions on the topics of House Bill 55 Requirements, Role of the Regional Planning Council, Overview of Planning and Zoning in Kentucky, Open Meetings & Open Records Laws, Procedural Due Process for Planning Commissions and Board of Adjustments. The guest speakers included Mr. Ed Poppe, Director of Planning & Development for the City of Elizabethtown, Mr. Tim Butler, Attorney at Law, and Ms. Janet Johnston, Associate Director of Community Development for the Lincoln Trail ADD.

The next workshop is scheduled for Wednesday, December 12, 2001.

Three City Clerks Receive Professional Certification

Three Lincoln Trail city clerks received the Certified Kentucky Municipal Clerk designation at the Kentucky Municipal Clerks Institute in Lexington August 6 - 10.

Bobbe D. Blincoe (City of Bardstown), **Beatrice M. Heil** (City of Muldraugh), and **Jean M. Jury**, (City of Bloomfield) completed 100 hours of instruction over a three-year period through the Kentucky Municipal Clerks Institute, an International Institute of Municipal Clerks' Accredited Certification Program.

Instruction included subject areas of public administration, social and interpersonal skills, and electives



Six clerks attend Kentucky Municipal Clerk Institute: Front Row (left to right) are Jean Jury, (City Clerk, Bloomfield), Tara Collins, (City Clerk/Treasurer, West Point), and Dean Nelson, (PAS, Lincoln Trail ADD). Back row (left to right): Sherri Osbourne, (Assistant City Clerk, Springfield), Bobbe Blincoe, (City Clerk, Bardstown), Rebecca Heitz, (Assistant City Clerk, Vine Grove), and Beatrice Heil, (Deputy City Clerk, Muldraugh).

2001 GRANT AWARDS

RENAISSANCE KENTUCKY

City of Bloomfield, \$5,000	City of Irvington, \$5,000	City of Bardstown, \$92,500
City of Cloverport, \$277,500	City of Lebanon, \$262,500	City of Springfield, \$827,500
City of Vine Grove, \$77,500	City of Elizabethtown, \$575,000	

TRANSPORTATION EQUITY ACT FOR THE 21ST CENTURY (TEA-21)

Meade County, Brandenburg Streetscape Improvements, \$100,000
Nelson County, Wickland Historic Site Acquisition, \$300,000
Nelson County, Rail & Railcar Rehabilitation, \$100,000

RECREATIONAL TRAILS PROGRAM

City of West Point, Fort Duffield Trails, \$20,000
City of Elizabethtown, Wintersmith Trail, \$45,000
Nelson County, Dean Watts Park Trail, \$50,000
Mackville Community Development, Inc., Mackville Community Trail, \$35,000

LAND AND WATER CONSERVATION FUND (LWCF)

City of Muldraugh, \$17,685.74	City of Springfield, \$30,000
--------------------------------	-------------------------------



New Program Helps Caregivers

Federal legislation has been enacted as part of the Older Americans Act known as Title III-E the Family Caregiver Support Program. This program differs in that its primary focus is the caregiver rather than the care recipient. The beauty of the program, however, lies in the fact that the care recipient ultimately benefits as well.

Who qualifies as a caregiver?

This program is specifically designed to assist those who are unpaid providers of in-home and community care for parents, relatives, or friends aged 60 years and older. Another group of caregivers served by this program is grandparents or older relative caregivers who are 60 years and older who are caring for children under the age of 19. They may or may not have legal guardianship.

What does the program offer? The Family Caregiver Support Program offers a continuum of services including:

Information to caregivers about current available resources. This includes education, provision of resource booklets, handouts, and participation in health fairs.

Assistance of one-on-one assessment and case management to determine needs and to assist the caregiver in finding and using the appropriate services. This includes assessing needs, developing care plans, authorizing services, arranging services, coordinating the provision of services with providers, follow-up and reassessment.

Counseling/Support Groups/Training in the provision of advice, guidance and instruction about options and methods for providing support to caregivers in an individual or group setting. This includes support groups, education and training.

Respite, which is temporary, substitute care or living arrangements to provide a brief period of relief/rest for caregivers. This is provided in the form of in-home respite, adult day care respite, or institutional respite for an overnight stay on an intermittent, occasional, or emergency basis.

Supplemental Services are other services to support the needs of caregivers such as home modification devices, caregiver aides, etc..

What area does it serve?

The Family Caregiver Support Program serves all counties of the Lincoln Trail Area Development District: Breckinridge, Grayson, Hardin, LaRue, Marion, Meade, Nelson and Washington.

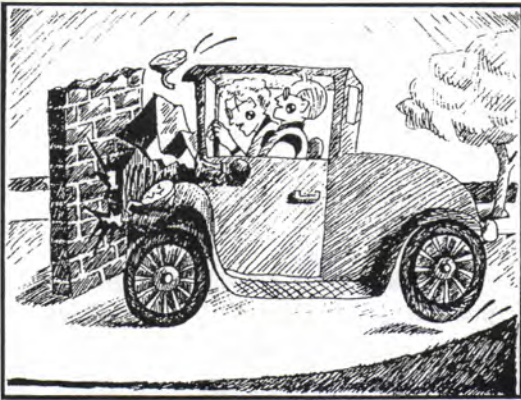
What is the cost?

There is no charge for services provided by the program. However, donations to the program are accepted and those funds are utilized to expand program services.

How to participate in the program:

A Caregiver Survey and Needs Assessment Form is available by calling Cathy Callahan, Family Caregiver Program Coordinator, at (270) 769-2393, (800) 264-0393 or emailing familycaregiver@ltadd.org.

Perhaps someone you know -- a relative, friend, neighbor, or church member -- would benefit from this program and/or being part of a family caregiver support network. Please do not hesitate to tell them about this program, and encourage them to call for more information.



Driving Ms. and Mr. Aging: A National Agenda

Reprinted with permission from Aging Today, newspaper of the American Society on Aging, volume XXII, No. 5, pages 9 & 12, September-October 2001. Copyright 2001, American Society on Aging, San Francisco, CA; www.asaaging.org.

The United States faces a revolution in transportation, driven by its growing population of older people, those over 65. Today, 35 million Americans are 65 years old or older-12.4% of the population. By 2030 there will be 70 million older people; one in five Americans will be 65 years old or older. This large population of older people will create new business, retailing, housing, social services and medical patterns, and it will present significant safety and mobility implications. The nation, however, has not yet

taken adequate steps to address the significant transportation needs of its changing population.

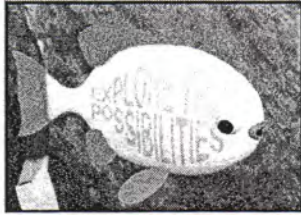
In future decades, more older people will be licensed drivers and they will drive more than the present generation of elders. Older people, be they drivers, occupants of vehicles or pedestrians, are much more fragile than younger ones. When they are involved in crashes, occupants over 80 are more than four times likely to die than people under 60. As a result, projections show that, without corrective action, more than 20,000 older people per year could die in highway-related crashes by 2030. This is much greater than the current death toll from alcohol-related crashes. Overall, more older people are currently being killed on the highway than people in other age groups. Their fatality rate is growing while rates for all other age groups have been decreasing for the last 20 years.

Some older people find driving difficult because of vision problems, cognitive limitations, side effects of medications, slower reaction time, muscular difficulties, disease and other causes. Many are aware of their limitations and reduce or discontinue their driving in difficult circumstances. As a result, contrary to the stereotypes sometimes held by the public, the incidence of automobile crashes involving elders is lower than that of licensed drivers in other age groups.

Mobility is essential to a healthy society and to the ability of elders to remain independent in their homes and communities. It is not a dispensable luxury. Many people remember the feeling of freedom that came after they first got their drivers license-the rich array of destinations and activities that came into reach. Losing the ability to drive is the same thing in reverse. Many middle-aged people observe this loss through their own parents, who have been reluctant to stop driving or who lost interest in former activities once they were unable to drive. Older people want to be independent and continue to drive. Almost everyone is able to think of older people who are unfit to drive and refuse to quit, and stories of their children or health providers trying desperately to get them to stop by making pleas, hiding keys, or disabling engines. The tenacity with which some older people cling to the wheel is evidence of the value they place on their mobility and independence. Unless individuals plan far ahead for possible changes in transportation needs, they may find themselves stranded in their homes, located far from public transportation services, and unfamiliar with or incapable of using other alternatives to the private car. They may find that they need special help carrying packages or safely getting to buses or taxis.

The effects of lack of mobility may be reduced by use of the personal computer, the Internet and other advanced technologies that may reduce the need for some individuals to travel. More and more older adults are computer literate, and this percentage is likely to increase as computer use becomes universal and as people with computer familiarity become older. As more elders are able to order food, medicine and other goods via their computers, their essential travel needs may diminish-but their social isolation may increase. Such isolation can seriously undermine the quality of life for older adults and accelerate declines in personal health.

Business-as-usual plans and programs will not meet the challenge of providing safe mobility for tomorrow's older Americans. Products and services stimulated by the marketplace will probably not be sufficient to meet the changing needs of a changing population. There is no simple solution for the coming shortfall between safety and mobility expectations; organizational responsibility is a shared responsibility that requires coordinated action by many, starting now. Alterations to highway and pedestrian infrastructure and elder-friendly land-use configurations will require many years to phase into practice. Motor vehicle designs and features that anticipate the needs of fragile customers have yet to be completely developed. Improved driver training, rehabilitation and licensing practices require standards. New levels of communication and cooperation among government agencies, medical practitioners, social service agencies, law enforcers and courts must be instituted. Better alternative forms of transportation will require new partnerships between local community leaders, volunteer groups and social service agencies. Governments and other stakeholders must begin immediately to address the barriers to providing tomorrow's older citizens with the safe mobility they desire and require.



Employment & Training News

FULL-TIME WIA SERVICES LAND IN BARDSTOWN

To provide better service to the entire LTADD, a full-time client services manager has been placed at the Bardstown Career Center. The Career Center in Bardstown now provides a dedicated client services manager for dislocated workers, adults and in-school youth.

The services provided in Bardstown was further reinforced at the recent job fair, held on the 28th of August at the Bardstown Civic Center, where informational fliers were handed out and resume services provided.

The Bardstown Career Center is located at 860 W. Stephen Foster Avenue. All inquiries about the services offered at the Bardstown office should be directed to: (888) 570-5495.

INFORMATION TECHNOLOGY ADVANTAGE PROGRAM (ITAP)

In the third quarter of 2001 the Information Technology Advantage Program (ITAP) showed increasing results in the Lincoln Trail ADD. The employer phase of the grant allows the company to send their Information Technology staff to school upgrade their IT skills and qualify for a 50% rebate of training costs. The following employers have signed agreements and have taken advantage to this opportunity: Ambrake Corporation, Elizabethtown Community College, First Citizens Bank, First Federal Savings Bank, Fort Knox National Company, Gates Rubber, Superior Essex and US Banc:source in Hardin County, Intertec Systems and St. Martin de Porres in Nelson County, and Toyotomi America in Washington County. Six more companies are currently considering entering into agreements.

The individual phase of the project allows people who are unemployed or employed and not working in the IT field to attend approved training and have 100% of their training costs paid by ITAP. We currently have eighteen individuals from Hardin, Marion, Meade, Nelson and Washington counties enrolled in IT training at schools such as Elizabethtown Technical College, A Technological Advantage, Accent, New Horizons and Sullivan University. These students are receiving training in computer hardware and/or software skills.

Recruitment continues in the employer phase. Any employer large or small interested in getting IT staff trained through ITAP should contact Jim Skees, Workforce Liaison, at the ADD office at (270) 769-2393 or jim@ltadd.org.

Staff Training News

Employment and Training Staff attended many trainings in the last quarter. Several staff members attended EKOS Training which is new data base system to be implemented sometime next year. Other staff attended a Financial and Administrative Conference in Orange Beach, Alabama. The client services managers are attending a four-part session in Columbus, Ohio, focusing on client-centered approaches, assessments, developing an employability plan and placement monitoring.

YOUTH PROGRAMS

Changes in the youth programming this fiscal year include two new contracts. These contracts will provide training in the areas of basic skills, work readiness, occupational skills, job search, and other services to out-of-school youth. Learning centers have been set up in three area counties; Hardin, Grayson, and Washington. They are expected to serve a total minimum of 60 youth this year and are willing to serve youth from surrounding counties. We have four contracts providing similar services in Breckinridge, Marion, and Nelson counties for in-school youth. We are already starting to see some success....youth are raising their reading and mathematical abilities, getting diplomas and GEDs, learning good work ethics, and finding jobs.

At the state level, youth round tables and youth lead meetings have been established to give youth workers and youth council members across the state a chance to ask questions, learn what others areas are doing, and to share their own best practices. This has been very interesting and helpful to everyone involved. A youth provider summit is currently being planned for November 7th and 8th and will be open to youth staff members, council members, current training providers, and anyone who may be interested in providing services through the youth program at a future time. Anyone interested in more information may contact Melanie Staderman at (270) 234-1647.

Community Collaborations for Children

The Community Collaborations for Children Network recently purchased video tapes about Attention Deficit Disorder and distributed them to Family Resource Centers and Department for Community Based Service offices in each of our eight counties. The tapes are to be used to educate parents and teachers on the cause, effects, and treatment of the disorder. The network also contributed funds for the printing of safety brochures for people who are victims of domestic violence.

Our next big project is to sponsor a lunch presentation by Trey Berlin from the Prevent Child Abuse Kentucky organization. He will give a presentation on his organization and the ways that we as a community can work towards child abuse prevention. We will also use the meeting to distribute materials on the Adoption and Safe Families Act and Developmental Assets. The meeting will be held on November 2, 2001 at the Lincoln Trail Area Development District. Anyone interested in attending needs to contact Melanie Staderman at (270) 234-1647.

Rapid Response Activities

The Lincoln Trail Workforce Investment Area Rapid Response Team has been very busy over the past few months. The Rapid Response Team, made up of several partner agencies, conducts group information sessions for companies who are experiencing a layoff or closure. The purpose of these sessions is to provide the employees with the tools and resources they need to deal with their job loss and to transition back into the workforce as smoothly as possible. The Lincoln Trail Workforce Investment Area has experienced the loss of over 500 jobs since January 2001. The Rapid Response Sessions have played a vital role in linking these individuals with programs and services that will assist them in landing their next job or starting a new career.

Staff News



Lincoln Trail ADD welcomes Bill Pease, Client Services Manager, to the staff. Bill lives in Elizabethtown with his wife and is currently attending Western Kentucky University. Bill spent 16 years in the U.S. Army where he spent time in Germany, Louisiana, and Fort Knox.

Bill will be working out of the Bardstown Career Center.

The following staff marked another milestone as they celebrated their anniversary dates with Lincoln Trail ADD:



Anita Keplinger
23 years



Wendell Lawrence
18 years



Mike Burress
16 years



Debbie Robinson
14 years



Rachel McKinney
11 years



Russell Mays
8 years



Julie Watson
6 years



Angela Nance
4 years



Karen Weaver
3 years



Oct.	9	WIA Youth Council
	10	Regional Highway Safety Committee Regional Transportation Committee
	12	DLG Training for County Officials
	17	LTADD Board of Directors Meeting
	24	Lincoln Trail Municipal Clerks Association
	25	Lincoln Trail Aging Service Providers Meeting Lincoln Trail Mental Health & Aging Coalition
	29	Kentuckians for Quality of Life Forum
Nov.	2	Community Collaborations for Children
	7	Regional Transportation Committee
	12	Veterans Day - LTADD Office Closed
	14-16	Governor's Conference on Aging
	21	LTADD Aging Advisory Council LTADD Board of Directors Meeting
	22/23	Thanksgiving - LTADD Office Closed
	28	Lincoln Trail Municipal Clerks Association
Dec.	12	LTADD Regional Planning Council
	19	LTADD Board of Directors Meeting
	25	Christmas - LTADD Office Closed

Since most dates are tentative, please refer to meeting notices or call the LTADD office for correct dates, times and locations prior to traveling to attend.

TO YOUR GOOD HEALTH

National Immunization Week, October 14-20, is a good time to remember to talk to your health care provider about pneumococcal pneumonia.

Pneumococcal pneumonia is a serious disease. Along with other forms of pneumococcal disease, it is responsible for up to 12,500 deaths each year in the United States.

Older people and those with underlying medical conditions (such as diabetes or a chronic heart or lung disorder) are at increased risk for pneumococcal disease.

There are vaccines available for those at increased risk for pneumococcal pneumonia. These vaccines are not appropriate for everyone and do not always protect everyone. You should discuss the risks and benefits of vaccination with your doctor to determine if "the pneumonia shot" is right for you.

Lincoln Trail Area Development District

Wendell C. Lawrence, Executive Director

(270) 769-2393

OFFICERS

Mr. Larry Gatewood
Chairman
Breckinridge County

Judge Dave Hourigan
1st Vice Chairman
Marion County

Mr. Paul Steenbergen
2nd Vice Chairman
Grayson County

Judge Mark Brown
Secretary
Meade County

Judge Gary Logsdon
Treasurer
Grayson County

The preparation of this document was financed with Federal, State, and Local funds under a Joint Funding Agreement approved by the Southeastern Federal Regional Council.

The Lincoln Trail Area Development District does not discriminate on the basis of race, color, national origin, sex, age, religion or disability, and provides, upon request, reasonable accommodation including auxiliary aids and services necessary to afford an individual with a disability an equal opportunity to participate in all services, programs and activities of the agency.

Lincoln Trail Area Development District
P.O. Box 604, 613 College Street Road
Elizabethtown, KY 42702

PRSRT STD
U.S. POSTAGE
PAID
ELIZABETHTOWN, KY
PERMIT NO. 251