



THE RAIL SPLITTER

Lincoln Trail A.D.D.

Volume 18

4th Quarter 1992

LINCOLN TRAIL ADD HOLDS 24TH ANNUAL MEETING



From left to right: Judge Bobby Brady, Judge Tommy Turner, Judge Tom Moorman, Mayor Gene Smith, Mayor Sherrill Watson, Mayor Richard Brandenburg

The Lincoln Trail Area Development District Board of Directors held their 24th Annual Meeting on April 16, 1992, at the Pritchard Community Center in Elizabethtown. Election of officers was held as follows: Mayor Gene Smith, Chairman (City of West Point); Judge Tom Moorman, First Vice Chairman (Breckinridge County); Judge Tommy Turner, Second Vice Chairman (LaRue County); Judge Robert Brady, Secretary

(Washington County); and Mayor Richard Brandenburg, Treasurer (City of Vine Grove). Other annual meeting events and awards presented are found on pages 10 and 11 of this newsletter.

Board of Directors Meeting Dates
August 19, 1992
September 16, 1992
October 21, 1992
November 18, 1992

GOVERNOR PRESENTS AWARDS TO KY SMALL BUSINESS OWNERS

On May 5, 1992, Governor Brereton Jones spoke at the Governor's Luncheon presented by the Kentucky Chamber of Commerce. The luncheon was part of the two day convention titled "Moving Volunteerism into the 21st Century", and was the 46th Annual Kentucky Chamber of Commerce Convention.

Governor Jones reviewed what he considers to be "the most far-reaching and most innovative economic development legislation ever passed" during the 1992 Kentucky General Assembly. Jones wants

Kentucky to be "a truly business friendly state".

Governor Jones and Bill Federhofer, Kentucky SBA District Director, then presented this year's SBA Small Business Person of the Year Award to Alan Bernard, President of Mid-Park, Inc. of Leitchfield (pictured at right). Other award winners include Dan Brandenburg, staff writer for The News-Enterprise of Elizabethtown, Rebecca Richardson of Covington, and Michael Mountjoy of Louisville.



IN MEMORY DOROTHY M. DOLLE

On January 28th of this year, Lincoln Trail lost a dedicated employee and valued friend in Dorothy M. Dolle. For the past eleven years Dorothy had served in various capacities with the Aging program at Lincoln Trail. Not only in her official capacity as the Aging Program Assistant, but also a volunteer, she was active in numerous organizations to advance the cause and service to Seniors. She approached

every endeavor with a youthful exuberance and dedication. Dorothy was outspoken in her concern and diligent in her efforts to improve the lives of those she represented. Her presence stays with those who knew her in the impact she made through her life of advocacy.

To honor her memory, the Lincoln Trail ADD Board of Directors established the Dorothy M. Dolle Memorial Award to be presented annually to an Older American within our region who

exemplifies the standards, dedication, and service set by Ms. Dolle.



Ms. Mildred Ford of Hodgenville is the first recipient of the Dorothy M. Dolle Memorial Award



ELDERCARE LOCATOR AVAILABLE IN KENTUCKY

The Eldercare Locator, which has been in operation since May 1991, began serving Kentucky on April 6, 1992. The Eldercare locator is a toll free telephone service designed to assist family and friends in locating assistance regarding community services for elders. This service is designed to provide specific information on access to a wide variety of community-based services that are available in every state. Area Agen-

eldercare
LOCATOR

cies on Aging, through the National Association, and in collaboration with the National Association of State Units on Aging and the United States

Administration on Aging, are sponsoring this free public service.

Over 4,000 older Americans and their families have been assisted by this service since it began. The Eldercare locator number is 1-800-677-1116 and is available from 9:00 a.m. to 5:00 p.m. (EST) for callers in 24 states in the eastern half of the United States.

NEW AND EXPANDING INDUSTRY REPORT

The following is a list of new and expanding industry announcements made during February, March, April, and May by the State's Cabinet for Economic Development.

<u>Location</u>	<u>Industry</u>	<u>Est. Jobs</u>	<u>Product</u>
*Springfield	Austin Apparel Mfg.	70	Blue Jeans
*Springfield	Boone Sheet Metal	18	Metal Fabrication
Hardinsburg	Breck. Co. Ready Mix	3	Ready Mix Concrete
Lebanon	Central KY Tool & Eng. Corp.		Tools, dies
Lebanon	Makers Mark		Bourbon

*Indicates new industry announcement

NEW LEGISLATION AFFECTING LOCAL GOVERNMENTS

During the recent session of the Kentucky General Assembly, several bills were passed which will affect local governments. The following is a brief summary of some of these bills:

SB 13:Amends KRS 189.390 to authorize cities and counties to establish by ordinance motor vehicle speed limits in their own jurisdictions without having to conduct engineering and traffic studies. Before they can become effective, alterations of speed limits on state highways must be approved by the Secretary of Transportation.

SB 186:Amends various statutes and makes changes to the requirements governing elections. Some of the changes include amending KRS 118.165 to require those wishing to be a candidate in a primary election to file their petition papers no later than the last Tuesday in January before the election. KRS 118.265 is also amended to require candidates running in the November regular election to file petitions for candidacy no later than the first Tuesday in August before the election.

SB 269:Creates new sections of KRS 95 to establish mandatory education and training requirements for all city and charter county police officers, and auxiliary police officers if they are authorized to carry deadly weapons or make arrests. Also, police officers hired after July 14, 1992

must be a high school graduate or have received a GED.

SB 270:Makes changes to the requirements related to the insurance premium tax. The tax may be enacted or existing tax rate changed only on July 1 of each year. Also, when enacting the tax or changing the tax rate, a copy of the ordinance must be filed with the Commissioner of Insurance at least 100 days prior to the effective date of the tax.

HB 16:Establishes new requirements for the "Open Meetings Law". Many of the changes to the law are significant.

HB 27:Amends KRS 174.100 to eliminate the 45-day waiting period between the required public hearing and the actual expenditure of road aid funds. A hearing is still required, but it may be held at any time prior to the expenditure of funds as long as proper public notice is given.

HB 29:Amends KRS 83A.069 (9) to allow all ordinances to be published in summary form, except for specific sections of ordinances that impose fines, penalties, forfeitures, taxes or fees. These sections must still be published in full. The summary to be published must be prepared by a licensed attorney.

HB 106:Makes many changes to the "Open Records Law", including a requirement that public agencies

must mail copies of records to a requestor if he/she lives outside the county where the agency is located. The requestor is responsible for all copy and mailing costs. It also authorizes the official custodian of the records to require written applications to inspect records. The application must be signed by the requestor. The written application may be hand delivered, mailed or sent via a facsimile machine.

HB 339:Amends KRS 424.320 to specifically authorize cities to publish lists of uncollected taxes. The list may show the name of the delinquent taxpayer and the amount owed. Cities may also add a fee of \$3.00 per name per publication to the amount of each tax claim owed in order to cover publication costs.

HB 582:Amends KRS 100.193 to allow for greater input on the part of governmental entities in a planning unit in the development of a comprehensive plan. Now, the fiscal court and other legislative bodies within the planning unit may develop and submit goals and objectives for the comp plan which must be considered by the planning commission when preparing or amending the comp plan.

Americans With Disabilities Act

On July 26, 1992 the provisions of the Americans With Disabilities Act (ADA) will become effective for employers with 25 or more employees, and on July 26, 1994 the act will become effective for employers with 15 or more employees. However, under Title II of the act, local governments and the services, programs and activities they offer have been under the effect of many of the law's provisions since January 26, 1992. The purpose of the act is provide a clear and comprehensive mandate for the elimination of discrimination against the disabled in employment, public accommodation, governmental services, transportation and telecommunications.

In order to comply with the acts numerous provisions, all local governments should complete a self evaluation of their facilities and services and a transition plan for making needed changes. They should also review their personnel policies and procedures manuals, positions descriptions, employment applications and other employment related provisions to insure that they do not discriminate against the disabled.

The Lincoln Trail ADD recently hosted a seminar put on by the Kentucky Association of Counties addressing local government responsibilities under the ADA, and ADD staff have attended a variety of other training programs in order to become more familiar with the provisions of the act. If you have not started addressing the provisions of the act for your local government, now is the time to start. If you need assistance or additional information, please contact Laura Rhea, Public Administration Specialist, at the ADD office.

GEOGRAPHIC INFORMATION SYSTEM

The Lincoln Trail Area Development Foundation received Area Development Fund monies to implement a Geographic Information System (GIS). GIS represents the application of state-of-the-art computer technology to mapping. Since maps are crucial to so many government operations, this represents a major advancement in services now available at Lincoln Trail. Some organizations that will benefit are Local Governments, Industrial Foundations, Planning Commissions, and Water Districts.

Lincoln Trail's involvement in GIS is part of a statewide effort to bring these capabilities to all local governments in Kentucky. The ADF money was used to purchase the hardware while the software and training was funded by a grant from the Appalachian Regional Commission and the Economic Development Administration and ADD Funds.

The GIS can be used to provide a variety of mapping services. All current mapping operations can be computerized. However, GIS is more than just using computers to generate maps. Using the information processing capabilities of a computer, GIS can associate information with parts of a map. For example, a map of all the census block boundaries can be associated with census population data. From this, calculations can be performed to generate thematic maps that show areas in different colors depending on the data for that area. Then at a glance, these maps can provide the data for everyday decisions.

REGIONAL DEVELOPMENT OFFICES ESTABLISHED

Governor Jones has established a Department of Community Development within the Cabinet for Economic Development. The Department will be charged with assisting local communities in meeting the needs of existing businesses and preparing for future economic development opportunities. To assist with meeting these goals, the Cabinet will establish three regional offices. The East Kentucky Office will be located in Prestonsburg, the West Kentucky Office in Madisonville, and the Central Kentucky Office in Frankfort.

Each regional office will have a staff of six community development professionals who will work with local elected officials, local and regional economic development agencies, area development districts, community and business organizations, state and federal agencies, and other interested parties.

For more information on which regional office and development staff person has been assigned to work with your community, write to the Cabinet for Economic Development, Capital Plaza Tower, Frankfort, Kentucky 40601, or call (502) 564-7670.

JOBS

The Lincoln Trail Regional JOBS plan for Breckinridge, Grayson, Hardin, Marion, Meade, and Nelson Counties was submitted to the Kentucky Department for Social Insurance in mid-March and has subsequently received interim approval as have other regional plans submitted across the state. This plan was complied with the assistance of the local Regional Welfare Reform Inter-Agency Advisory Council. Budget constraints prohibited authorization of JOBS funding in Kentucky for the following activities:

--**Skills training** (e.g., technical training provided by providers such as Kentucky Tech and proprietary schools).

--**Tuition or books for college.**

--**Support services** such as life skills classes, parenting classes, and coordination of transportation.

--**The \$300** for one-time work-related expenses.

Work supplementation. Area Development Districts will, therefore, be pursuing and identifying other local sources of funds (scholarships, grants, etc.) for tuition assistance for JOBS clients.

Greater emphasis will be placed this fiscal year on client participation, especially AFDC Unemployed Parent (UP) clients, in the **Community Work Experience Program (CWEP)**. CWEP is designed to improve the employability of individuals not otherwise able to obtain

employment by providing work experience and training. Participants do not receive any wages or salary for participation; participants may be placed only in projects which serve a useful **public purpose**: the fields of health, social service, environmental protection, education, urban and rural development, recreation, public facilities, public safety, etc. CWEP participants may **not fill established, unfilled position vacancies**. The Area Development Districts will be assisting the Departments for Social Insurance and Employment Services in identifying employers willing to participate in the Community Work Experience Program during the coming year.

FLURRY OF REVOLVING LOAN FUND ACTIVITY HIGHLIGHTS THE FINAL QUARTER OF FY 1992

The Lincoln Trail ADD's Revolving Loan Fund program experienced its most active quarter since it was initiated in FY 1988, resulting in the approval of four loans and the pending approval of a fifth. The projects involve approximately \$310,000 in RLF dollars, which in turn leveraged over \$1,078,000 in private investment and will result in 113 new jobs in the region. It should be noted that all five projects are located in different counties, further evidence of the RLF meeting its goal of making "...significant contributions to the enhancement of development for the entire region". Another highlight concerned the loan project involving an industry in Hardin County, which was the most recent addition to the RLF eligible area, only included since December, 1991. Loan activity in the fourth quarter included:

<u>Firm</u>	<u>Amount</u>	<u>Location</u>
Bluegrass Knitting	\$100,000.00	Lebanon
Audax	40,037.00	Leitchfield
Mouser's Kitchens	80,000.00	Elizabethtown
Gene Heinig	11,000.00	Bardstown
Central KY Truss	83,250.00	Hodgenville

The LTADD has now expended the original capital from our EDA Title IX Grant and will enter the phase of the program from which its name is derived: "Revolving". Future loan activity will be subject to the availability of funds on hand. As monies are recaptured, subsequent loans can be made and further economic stimulation realized. Since the original capital has been expended, the LTADD uses this time to review the Revolving Loan Fund Plan and make any necessary adjustments in the program and administrative elements for future activity. The LTADD will attempt to seek continuous improvement in the RLF process and ensure that the program efficiently and effectively addresses the needs of the region.

1992 - 1993 JTPA CONTRACTS AWARDED

The Lincoln Trail Private Industry Council funded 19 Job Training Partnership Act projects for 1992-1993. These projects are intended to provide job training services to prepare youth and unskilled adults for entry into the labor force and to afford job training to those economically disadvantaged individuals and other individuals facing serious barriers to employment, who are in special need of such training to obtain productive employment.

The Council funded the following list of projects and contract negotiations are currently underway:

1. Breckinridge County Board of Education
Project Learn and Earn:*
12 slots at \$23,820.00

Project SERVE:
20 slots at \$24,000.00
Project Assisted Career Development:
30 slots at \$52,950.00
2. Elizabethtown Independent Schools
In-School Youth:
20 slots at \$25,095.00
3. LaRue County Board of Education
Out-of-School Youth:*
10 slots at \$27,000.00
In-School Youth:
15 slots at \$27,000.00
4. Hardin County Board of Education
Project Second Chance:*
30 slots at \$54,000.00
5. Washington County Board of Education
Project SEEK:
20 slots at \$24,000.00
Project Second Chance:* (also served adults) - 20 slots at \$48,299.00
6. Cloverport Board of Education
Youth Project:*
15 slots at \$31,500.00
7. Marion County Board of Education
Career Development:
30 slots at \$42,000.00
8. Meade County Board of Education
Project GEAR-UP:*
20 slots at \$35,700.00
9. Nelson County Board of Education
Career Education:
30 slots at \$42,000.00
10. Bardstown City Schools
Dropout Prevention:*
35 slots at \$63,000.00
11. Grayson County Board of Education
Project PHASE:
30 slots at \$48,000.00
12. St. Catharine College
College Tryout:
11 slots at \$50,000.00
13. Kentucky Tech Northwest
Vocational Education:
23 slots at \$60,000.00
14. Corrections Cabinet - Probation and Parole
Job Search, Pre-Employment Skills and Counseling:
45 slots at \$28,447.00

*Serving out-of-school youth

LINCOLN TRAIL AREA OCCUPATIONAL OUTLOOK TO 2000

Lincoln Trail ADD employment is expected to grow from 68,961 to 80,074 between 1987 and 2000, a gain of 16.1%.

Growth in employment will make available about 836 job openings annually.

About 23.8% of job openings will result from growth, and the remaining 76.2% will result from separations from the labor force.

The greatest number of job openings will be in production, operating and maintenance occupations; and service occupations.

The occupational structure of Lincoln Trail jobs is continuing its gradual shift from blue-collar and farming jobs toward white-collar and service occupations. Blue-collar jobs are not declining in actual number but are growing slower than white-collar and service occupations. Farming occupations are actually declining.

Over nine out of ten (91.3%) of the jobs due to growth will be in the service-producing industries. The goods-producing sector is projected to increase only slightly over the nineties.

The largest growth rates between 1987 and 2000 are expected in service occupations (28.2%); managerial and management-related occupations (24.1%); sales occupations (23.9%); and professional, paraprofessional and technical occupations (22%).

Reprinted from the Lincoln Trail Area Occupational Outlook to 2000, Department for Employment Services, CHR, Frankfort, Kentucky.

LTADD UNEMPLOYMENT DATA

3RD QUARTER				
COUNTY	CLF	EMPLOY	UNEMPLOY	RATE
Breckinridge	7,296	6,368	928	12.72%
Grayson	9,805	8,738	1,067	10.89%
Hardin	37,767	34,065	2,703	7.35%
LaRue	5,433	4,952	481	8.85%
Marion	8,445	7,606	839	9.94%
Meade	7,149	6,301	848	11.86%
Nelson	17,171	15,626	1,545	9.00%
Washington	4,868	4,465	403	8.28%
TOTAL:	96,934	88,120	8,814	9.09%

ANNUAL/91				
COUNTY	CLF	EMPLOY	UNEMPLOY	RATE
Breckinridge	7,110	6,463	647	9.10%
Grayson	9,735	8,842	893	9.17%
Hardin	36,201	34,035	2,166	5.98%
LaRue	5,346	4,942	404	7.56%
Marion	8,516	7,761	755	8.87%
Meade	7,096	6,372	724	10.20%
Nelson	16,983	15,709	1,274	7.50%
Washington	5,169	4,771	398	7.70%
TOTAL:	96,156	88,895	7,261	7.55%

Kentucky 7.40%
U.S. 6.60%

* MARK YOUR CALENDARS *

There are several very important community development deadlines on the horizon that may be of interest to you and your community:

Solid Waste Management Planning: Solid Waste Plans are due January 1, 1993. However, before a plan can be submitted to the Division of Waste Management, a public notice must be published giving the public thirty (30) days to comment on the plan. In order to compensate for this public comment period, all plans should be completed by October 1, 1993. The Lincoln Trail ADD staff will be assisting the counties of Breckinridge, Grayson, and LaRue with the preparation of their plans.

Community Development Block Grant (CDBG) Program: The next deadline for CDBG applications is September 16, 1992, for Special Projects.

If you should have any questions or need additional information about the CDBG program or about the completion of the Solid Waste Management Plans, please contact the ADD office, (502) 769-2393.

OTHER CDBG NEWS:

On June 22, 1992, the City of Bradfordsville received a "site visit" from the Department of Local Government (DLG) for their CDBG Housing Development application submitted in May. The visit was held in

Frankfort, with Mayor David Edelen attending, along with staff from both the engineering firm that wrote the application, Mayes, Sudderth & Etheredge, Inc., and the Lincoln Trail Area Development District. All assisted in fielding questions about the proposed project from DLG personnel. Site visits are usually conducted to clear up any unanswered questions about an application and often mean a project has been prioritized.

January 1, 1993
Solid Waste Plans Due
September 16, 1992
CDBG Special Projects

NEW OSHA REGULATIONS

New OSHA regulations aimed at protecting employees against infectious diseases, like Hepatitis B, HIV and other bloodborne pathogens will go into effect on July 6, 1992. Under these regulations, employers with employees deemed to be at risk of "occupational exposure" must provide immunization against Hepatitis B, training programs, protective clothing and equipment and a variety of other services for these employees with the employer bearing all expenses. In addition to these requirements, the new regulations require the employer to establish and maintain detailed records and keep the records for a minimum of thirty years.

"Occupational Exposure" means "reasonably anticipated skin, eye, mucous membrane or parenteral con-

tact with blood or other potentially infectious materials that may result from the performance of an employee's duties." Each employer must identify their employees who are at risk of occupational exposure. Employment classes surely to be impacted by these regulations include: EMTs or other ambulance personnel, police personnel, firefighters, corrections officers, health care workers, lifeguards and sanitation workers.

The federal regulations for the program were released on December 6, 1992. Different phases of the regulations go into effect on different dates, but all phases of the program must be implemented as follows:

1. Exposure control plan by May 5, 1992;
2. Information, training and record keeping system before June 4, 1992;

3. Personal protective equipment, Hepatitis B vaccination, post-exposure evaluation and follow-up, labeling and signs by July 6, 1992.

These requirements will mean additional expenses for local governments in order to comply. The vaccination for Hepatitis B usually consists of a series of three shots over a six month period, with blood tests required prior to and upon completion of the shots. Also, the additional protective equipment and record keeping requirements will mean added costs.

If you have questions about these regulations, please contact Joe Giles with the Division of Education and Training, Occupational Safety and Health Program at (502) 564-6895 or Laura Rhea, Public Administration Specialist, at the ADD office.

Health Care Town forum held at Elizabethtown

A Town forum was held May 19, 1992 at 7:00 at the Pritchard Community Center in Elizabethtown. Over 350 individuals attended in order to listen or express their views on what they felt needed to be included in the Kentucky Health Care Reform.

The forum was designed to achieve such goals as:

1. Educate the public about health care issues and policy changes.

2. To identify public perception of need reform or problems.
3. To build public support for the health care reform.
4. To provide citizens the opportunity to express themselves and participate in reaching a public mandate in health care reform.
5. To organize views expressed by the public and make them available for use as a major source of consideration to be

utilized by the Task Force in developing health care reform.

Appreciation and gratitude go to those who dedicated their time, talents and materials in helping make Lincoln Trail's Regional Town forum a success.

We would like to thank Mr. Gene Spragens, Jr. and Mr. J. William Corum for moderating, Alpha Recording Inc. for their sound and video equipment, Tunnel Hill for the loan of the flowers, ECC for the big screen and to the City of Elizabethtown for the use of Pritchard Community Center and staff.

FORT KNOX JOINT LAND USE STUDY (JLUS) CONTRACTOR SELECTED

At a meeting on April 29, 1992, the Fort Knox JLUS Executive Committee approved the recommendation of the Technical Committee and selected the firm of CGI-International (w/ Law Companies Group, Inc.) to perform contractor services for the Fort Knox Joint Land Use Study. The JLUS is a 1-5 year federally funded program which promotes joint planning efforts between federal installations and local communities.

CGI-International was selected following a lengthy procurement process initiated in January, 1992. The process began with the publication of Requests for Qualifications in newspapers in each of the three JLUS counties and mailings to over 20 firms/public institutions involved in planning-related services. Six firms submitted responses to the RFQ which were subsequently evaluated by a "RFQ Review Team", comprised of members of the JLUS Technical Committee. This evaluation resulted in two firms being recommended to the full Technical Committee for consideration, with a requirement for a formal presentation to the Technical Committee. These presentations occurred on April 15, 1992, and culminated in the selection of CGI described above.

CGI-International is described as "...a multi-disciplined economic and international development consultant firm serving government, indus-

try and business development organizations". CGI's principals "...have over 25 years successful experience and expertise in the fields of economic development, strategic planning and redevelopment".

The objective of the program, ensuring "that further public and private development around a military installation is compatible with both the mission of the military installation and the plans of the jurisdiction(s) responsible for the land surrounding the installation", becomes even more critical to our region given recent global and national trends. With the demise of the "Cold War", strong military cut-backs and the resultant Base Realignment and Closure legis-

lation (BRAC) have created an environment where the continued existence of any military facility is not guaranteed. Any effort by this are to ensure the vitality of both Fort Knox and its neighbors must be considered a significant investment in our economic future. Given the fact that urban growth and environmental issues near Army installations have increased in recent years, it is now recognized that local sensitivity to mission activities could adversely impact the future use of the base facilities and surrounding areas.

The Agreement for JLUS services was finalized in late May and the Impact Analysis phase of the Study is presently ongoing.

Royal Dublin Golf Company, Inc. of Springfield Utilizes LTADD RLF

The first recipient of the Lincoln Trail Revolving Loan Fund returned to the LTADD for additional assistance as it begins another phase of its growth in the golf bag industry. Royal Dublin has been in existence approximately three years. This most recent activity of the Lincoln Trail RLF represents the second loan closing with Royal Dublin. The company is a manufacturer of golf bags and employed 41 persons at the time of application. The firm required additional financing to increase operating capital for increased order needs for production.

The firm received approval of a \$35,000.00 RLF loan from the Lincoln Trail Area Development District Board of Directors at its January Board meeting. This was combined with funds from investors and financing from the First & Peoples Bank of Springfield. Although the company is in only its second full year of production, sales totaled over \$1.2 million last year. The firm proposes to create an additional 10 jobs at the end of two years following loan closing.



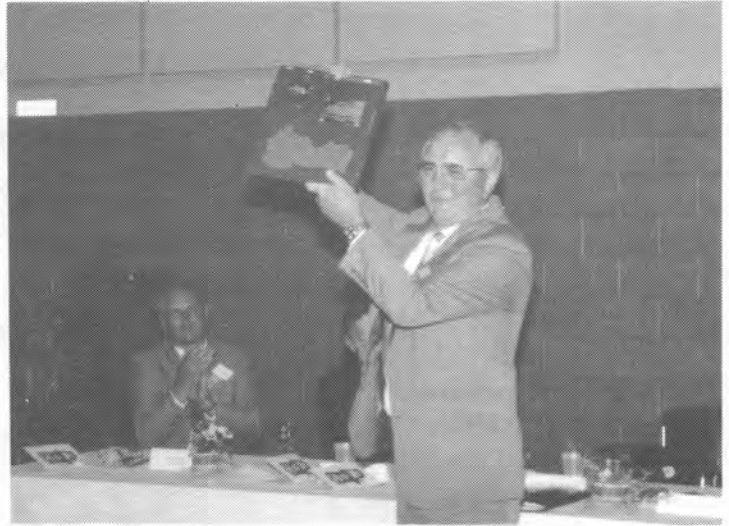
Senator Joe Wright was honored for his leadership, integrity and fairness to the people of the Fifth District.

Mrs. Barbara Wright, wife of Senator Joe Wright, was also honored for her many years of support to the Senator and his constituents.



Mayor of West Point, Gene Smith, newly elected Chairman of the Board of Directors (right), chats with Mayor Pat Fogle of Irvington.

Secretary of the Finance and Administration Cabinet, Joe Prather, was the Guest Speaker at the LTADD's 24th Annual Meeting



Mr. Lawrence Spalding, citizen member from Marion County, was this year's recipient of the Palmer A. "Pete" Peterson Memorial Award for his outstanding dedication to the aims and purposes of the Lincoln Trail ADD.

Outgoing Chairman, Mayor Sherrill Watson of the City of Leitchfield (right), chats with Mr. J. William Corum of Meade County. Mayor Watson was honored for his outstanding service to LTADD.



Official Publication of the
Lincoln Trail Area Development District

James E. Greer, Executive Director

OFFICERS

Mayor Gene Smith
Chairman West Point

Judge Tom Moorman
First Vice Chairman Breckinridge County

Judge Tommy Turner
Second Vice Chairman LaRue County

Judge Bobby Brady
Secretary Washington County

Mayor Richard Brandenburg
Treasurer Vine Grove

The preparation of this document was financed with Federal, State, and Local funds under
a Joint Funding Agreement approved by the Southeastern Federal Regional Council.

The Lincoln Trail Area Development District does not discriminate on the basis of race, color, national origin, sex, age, religion or disability, and provides, upon request, reasonable accommodation including auxiliary aids and services necessary to afford an individual with a disability an equal opportunity to participate in all services, programs and activities of the agency.

Lincoln Trail Area Development District
613 College Street Road
Elizabethtown, Kentucky 42702-0604

Bulk Rate
U.S. POSTAGE
PAID
Elizabethtown, KY
PERMIT NO. 251