














City of Lebanon

Sewer System

Legend

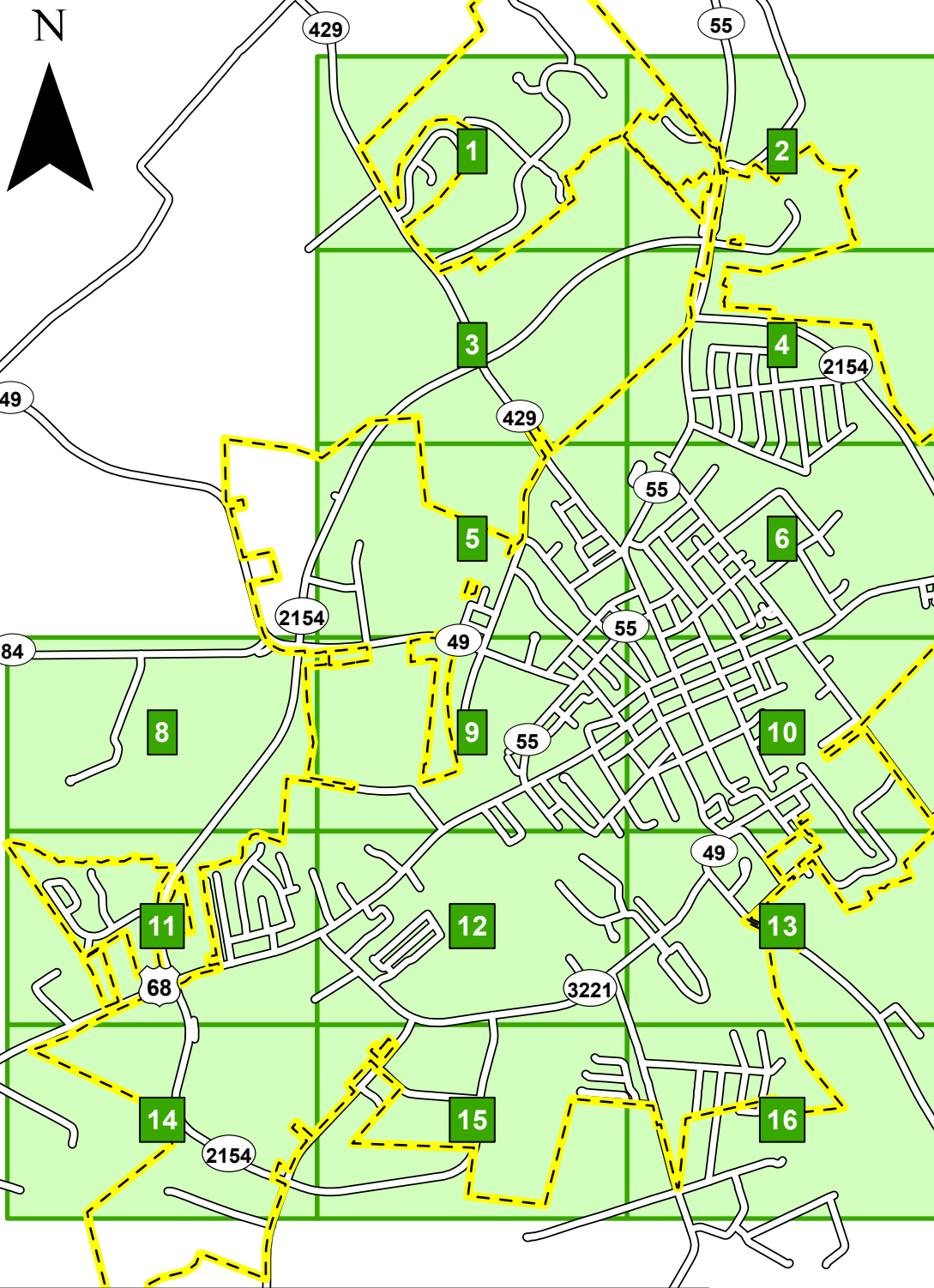
-  Lift Station
-  Manhole
-  Outfall
-  Treatment Plant
-  Proposed Sewer Point
-  Proposed Sewer Line
-  Sewer Line (Force)
-  Sewer Line (Gravity)
-  Adjacent Sewer System
-  Roads
-  Railroads
-  City Boundary
-  County Boundary

Highways - KYTC/LTADD
Corporate Limits - KY Secretary of State

Field Data Collection: Aug.-Oct. 2016, Apr. 2019
Lincoln Trail ADD with the cooperation of the City of Lebanon.
Imagery Source: ESRI World Imagery

Copyright 2023, Lincoln Trail Area Development District (LTADD)

This map is created for general planning purposes ONLY.
This map is not legally recorded, surveyed, or intended to
be used for purposes other than for generalized planning.
Nor does it show all aspects or features of this particular
area which may have changed over the years.
For questions contact us at (270) 769-2393.





Maxar, Microsoft



0 1,000 2,000 US Feet



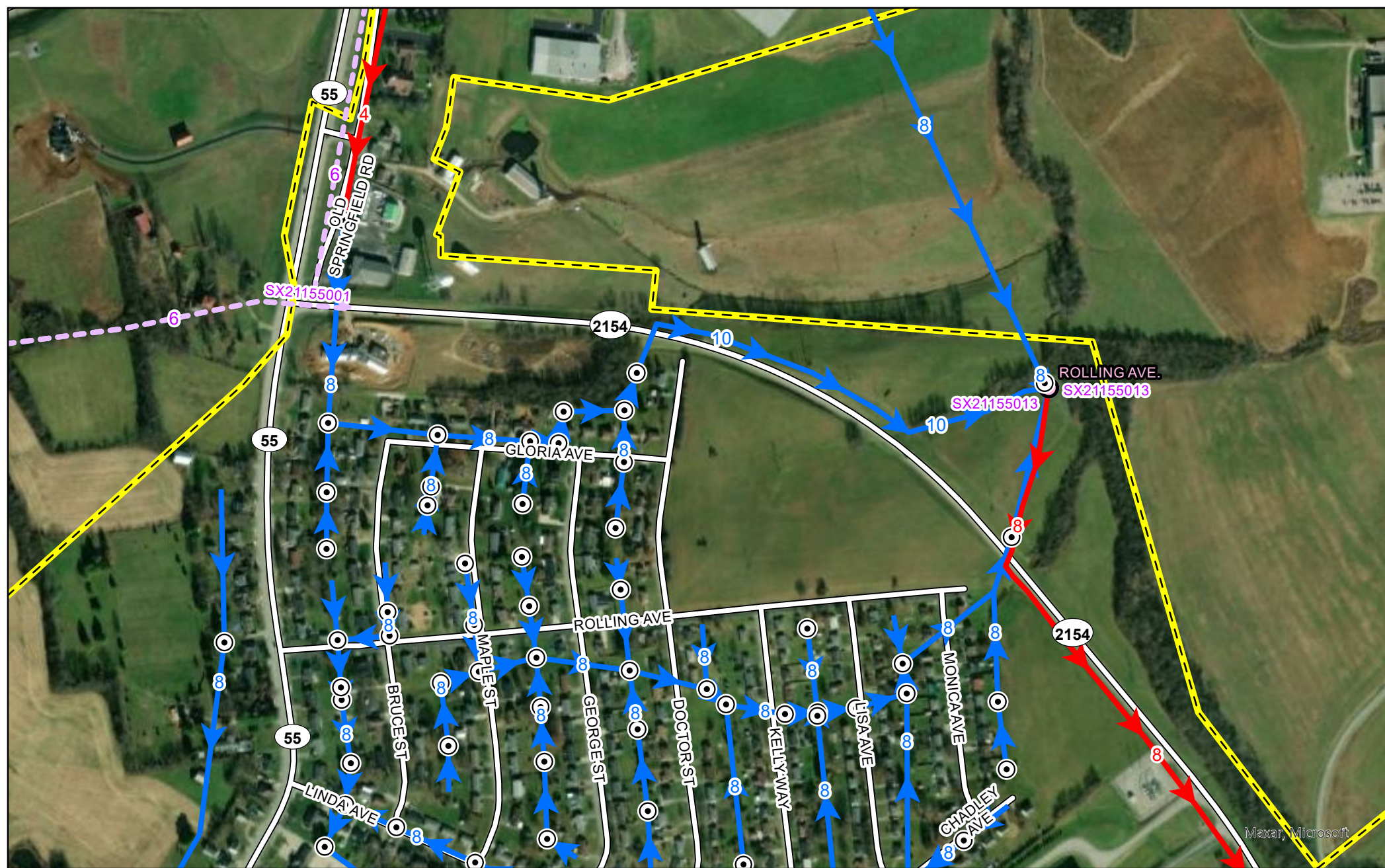
N



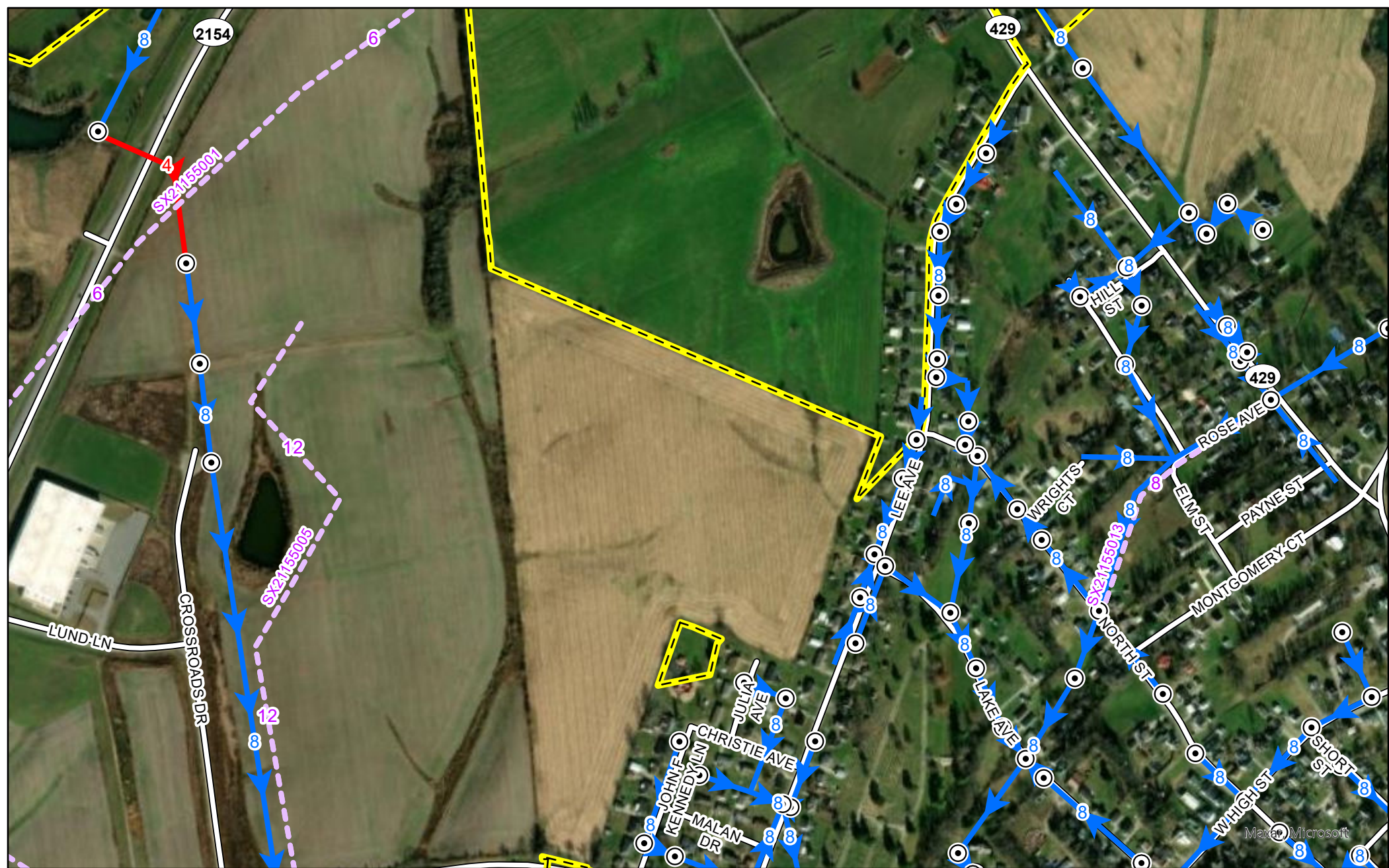
0

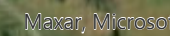
1,000

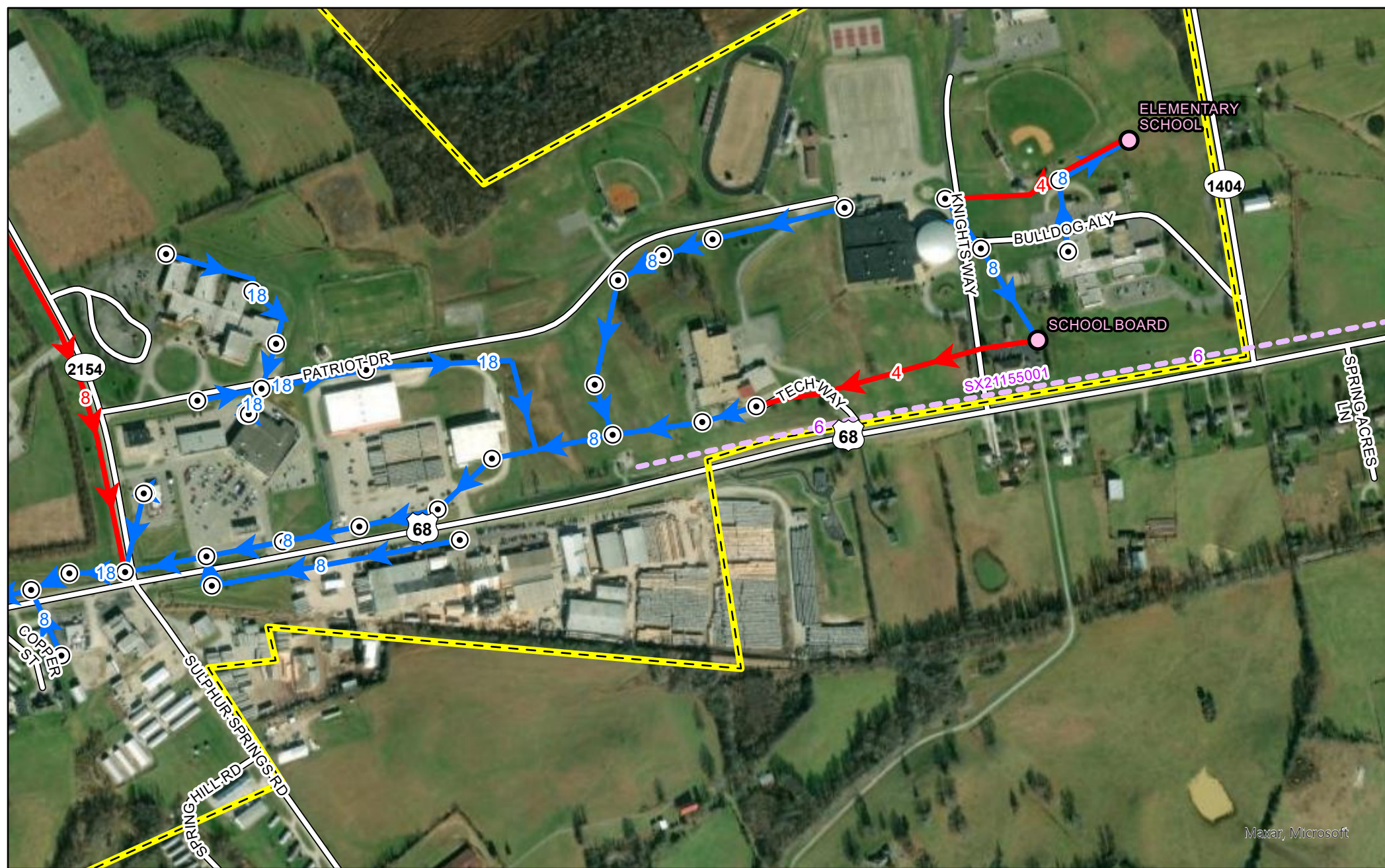
2,000 US Feet



0 1,000 2,000 US Feet



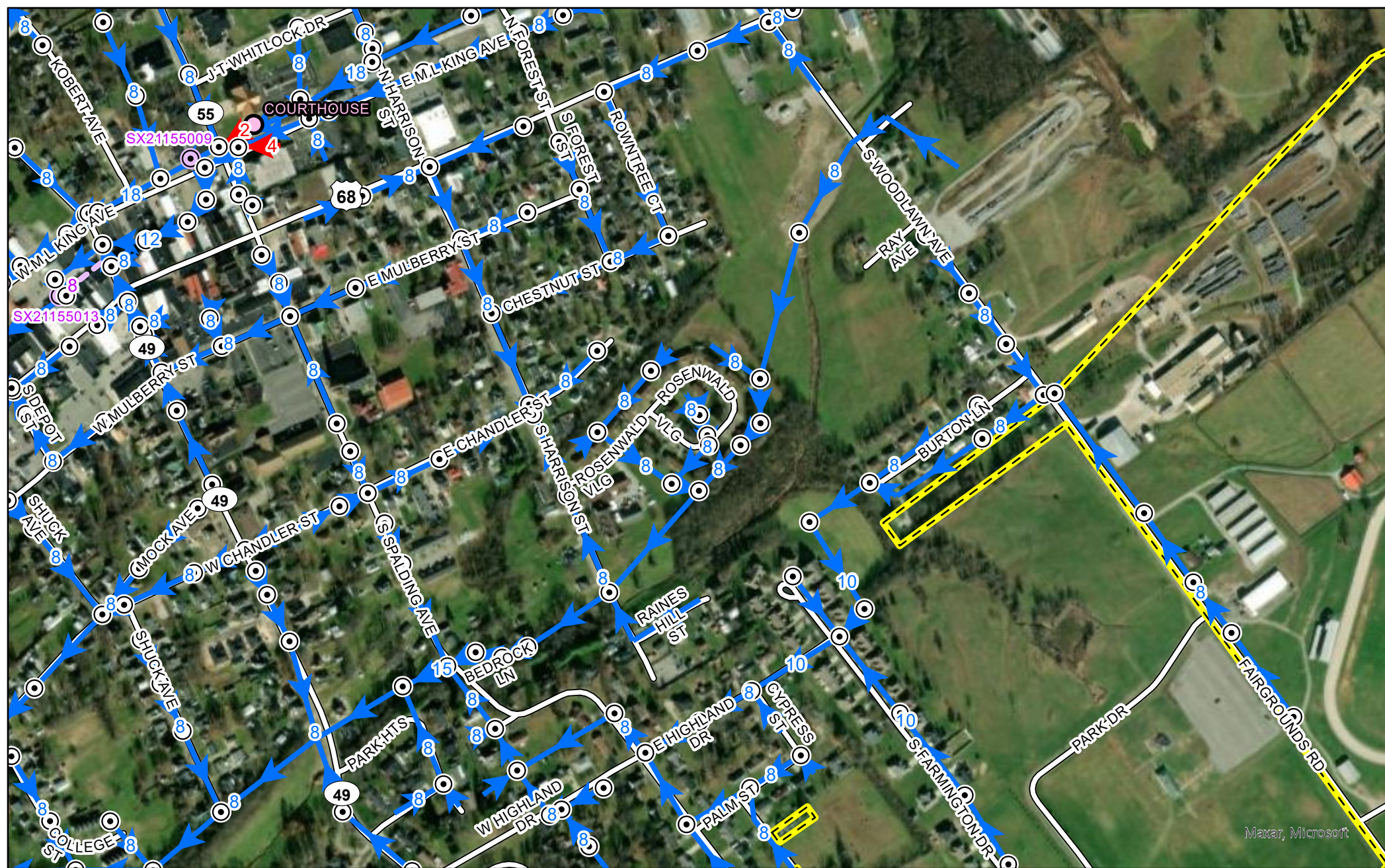




0 1,000 2,000 US Feet



0 1,000 2,000 US Feet



N



0

1,000

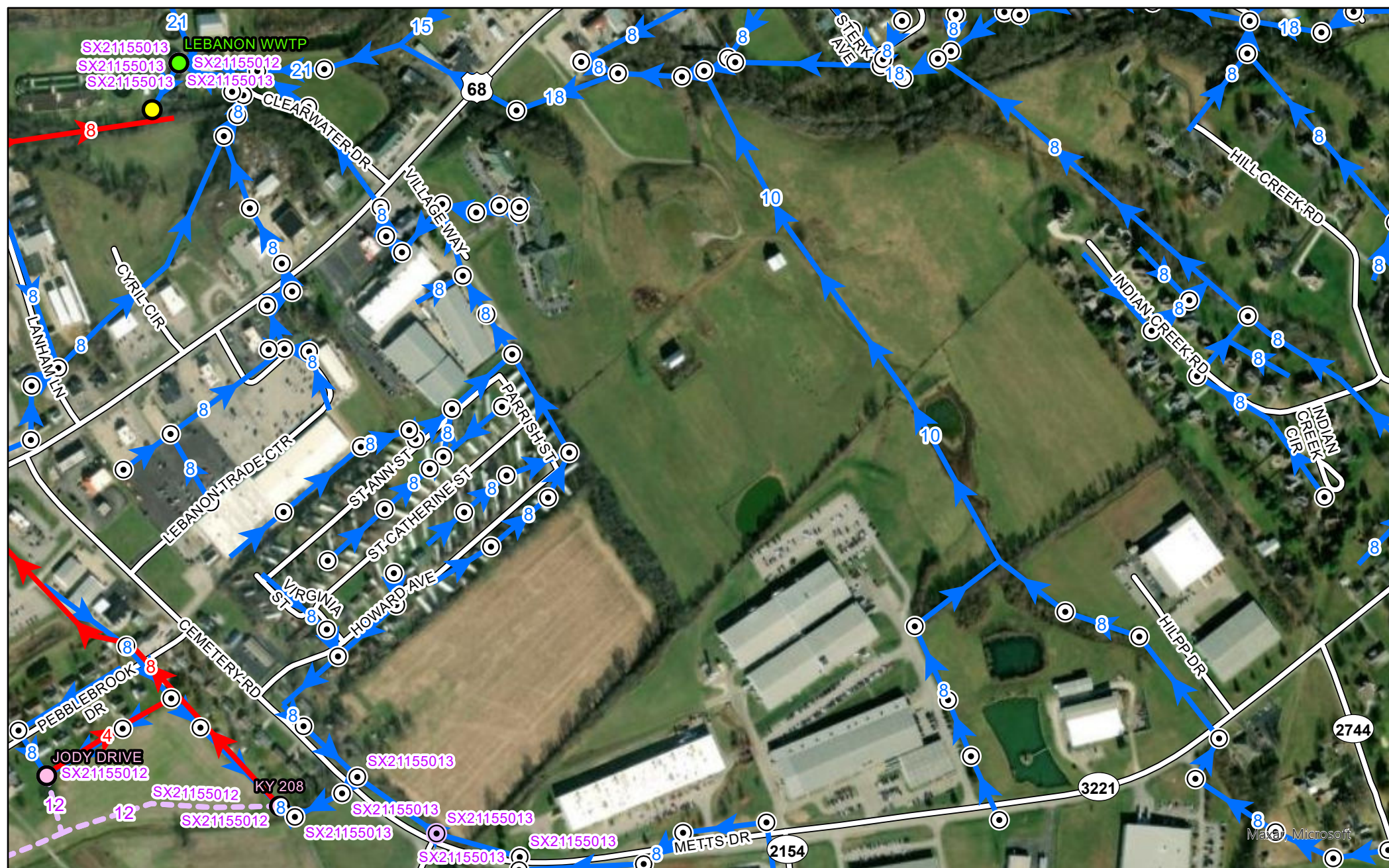
2,000 US Feet

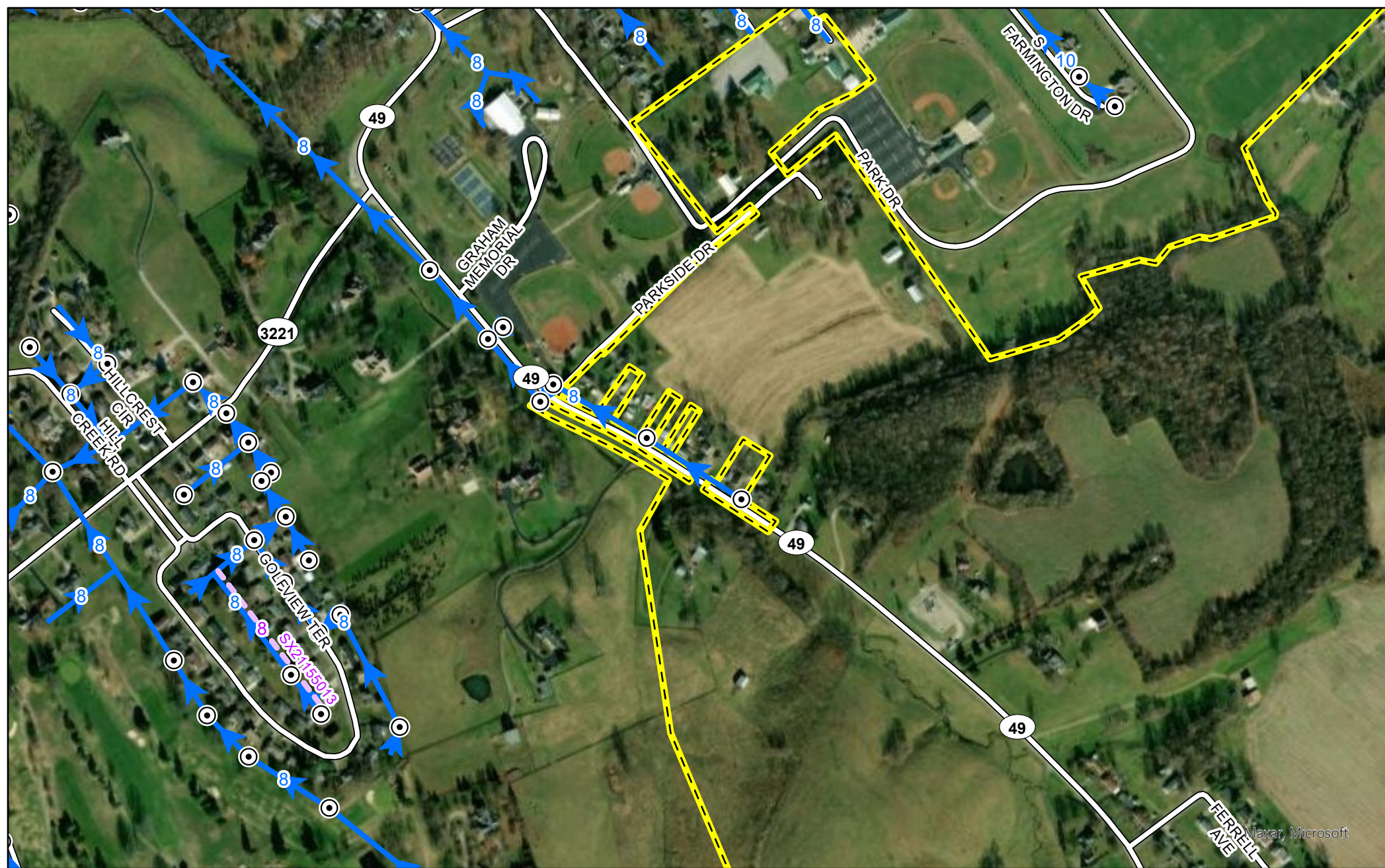


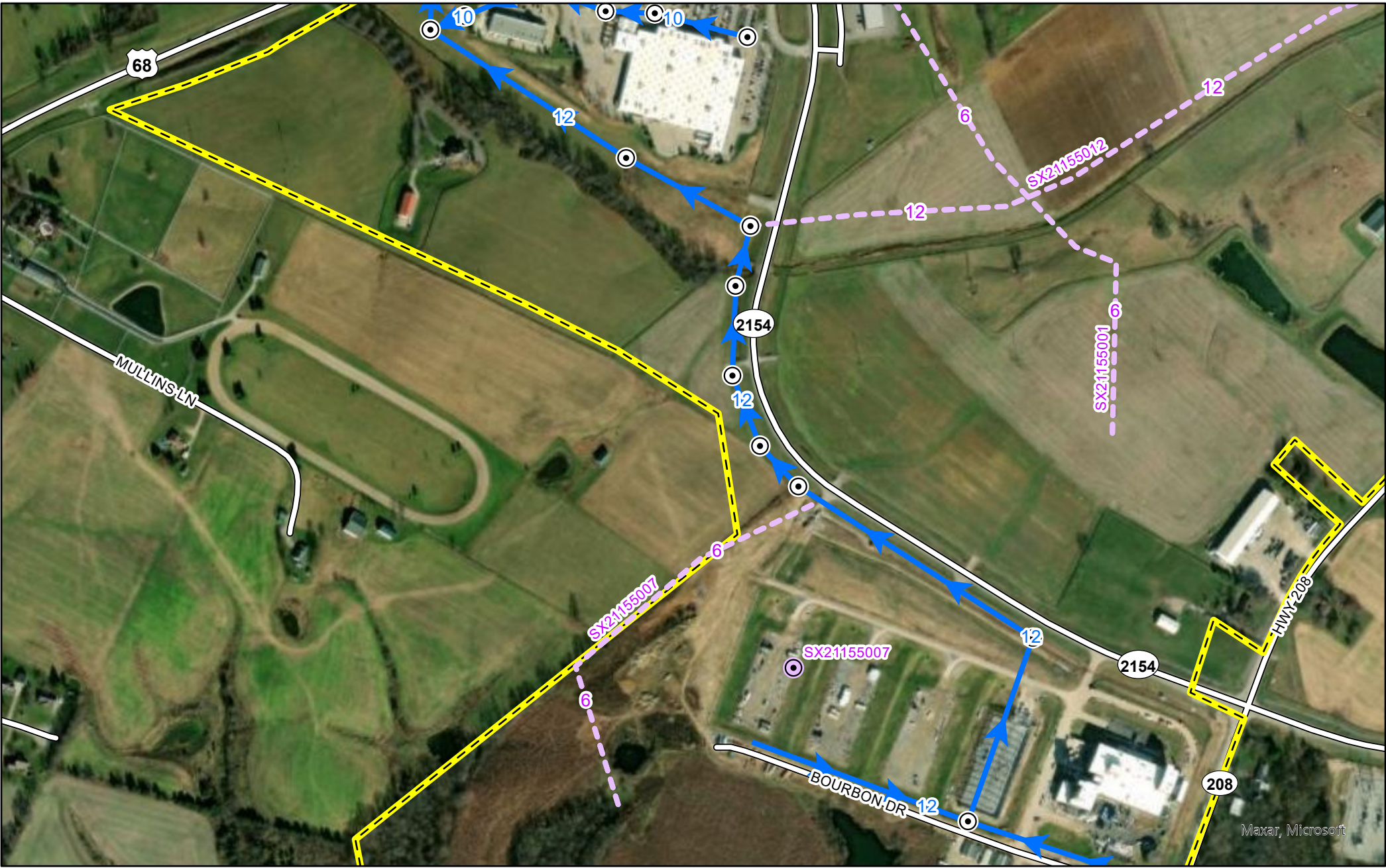
Maxar, Microsoft



0 1,000 2,000 US Feet







0 1,000 2,000 US Feet

Maxar, Microsoft



Maxar, Inc. © 2018
MORTON SMITH RD



0 1,000 2,000 US Feet