

# City of Irvington

## Sewer System

- ### Legend
- Lift Station
  - Manhole
  - Outfall
  - Treatment Plant
  - Proposed Sewer Point
  - Proposed Sewer Line
  - Sewer Line (Force)
  - Sewer Line (Gravity)
  - Adjacent Sewer System
  - Roads
  - Railroads
  - City Boundary
  - County Boundary



Highways - KYTC/LTADD  
Corporate Limits - KY Secretary of State

Field Data Collection, Sept.-Oct. 2013  
Lincoln Trail ADD with the cooperation of the City of Irvington.  
Imagery Source: ESRI World Imagery

Copyright 2023, Lincoln Trail Area Development District (LTADD)

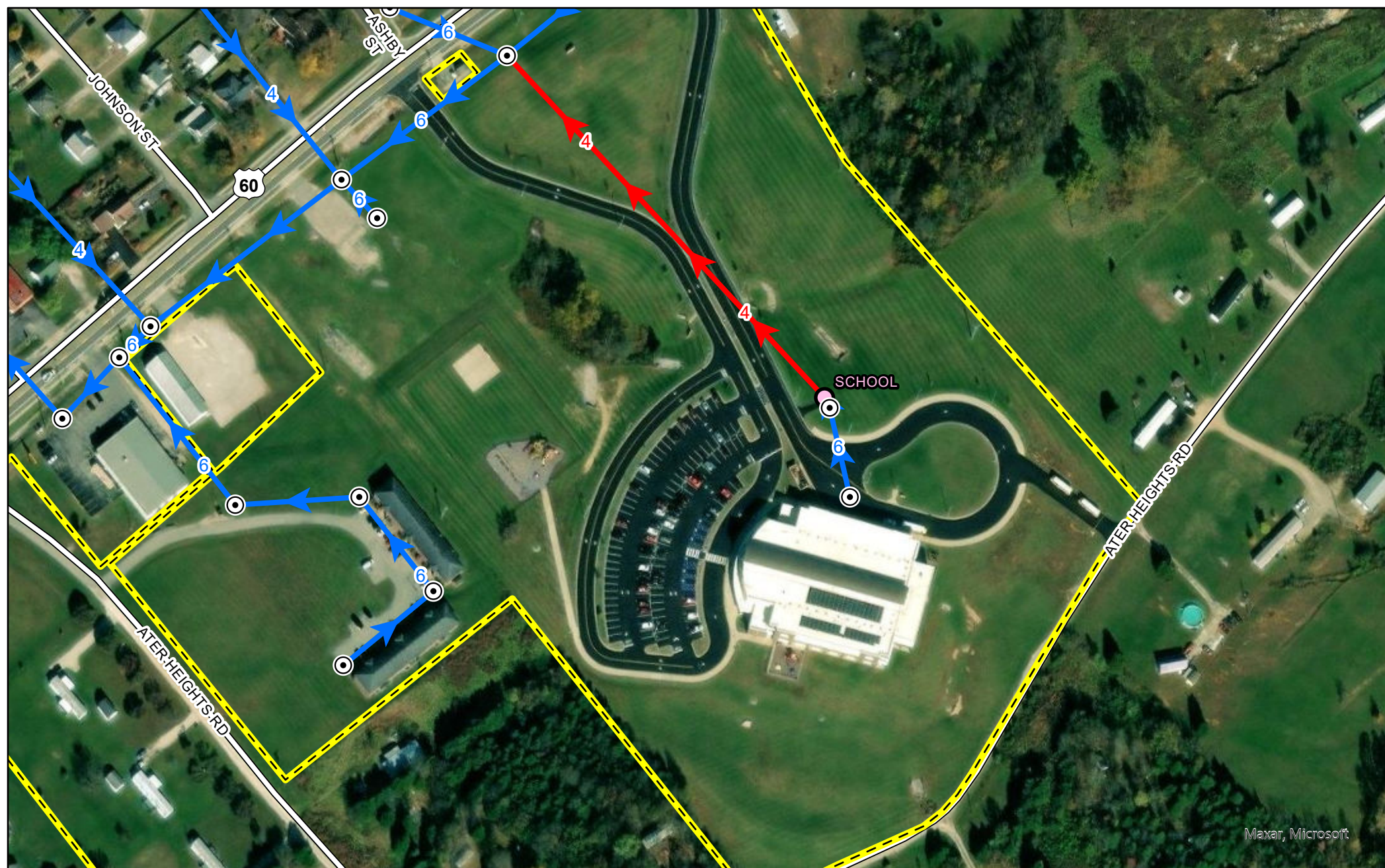
This map is created for general planning purposes ONLY.  
This map is not legally recorded, surveyed, or intended to  
be used for purposes other than for generalized planning.  
Nor does it show all aspects or features of this particular  
area which may have changed over the years.  
For questions contact us at (270) 769-2393.

0 0.5 1 Miles

2202







Maxar, Microsoft

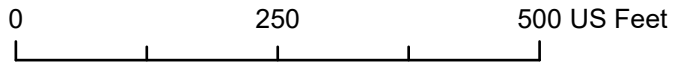
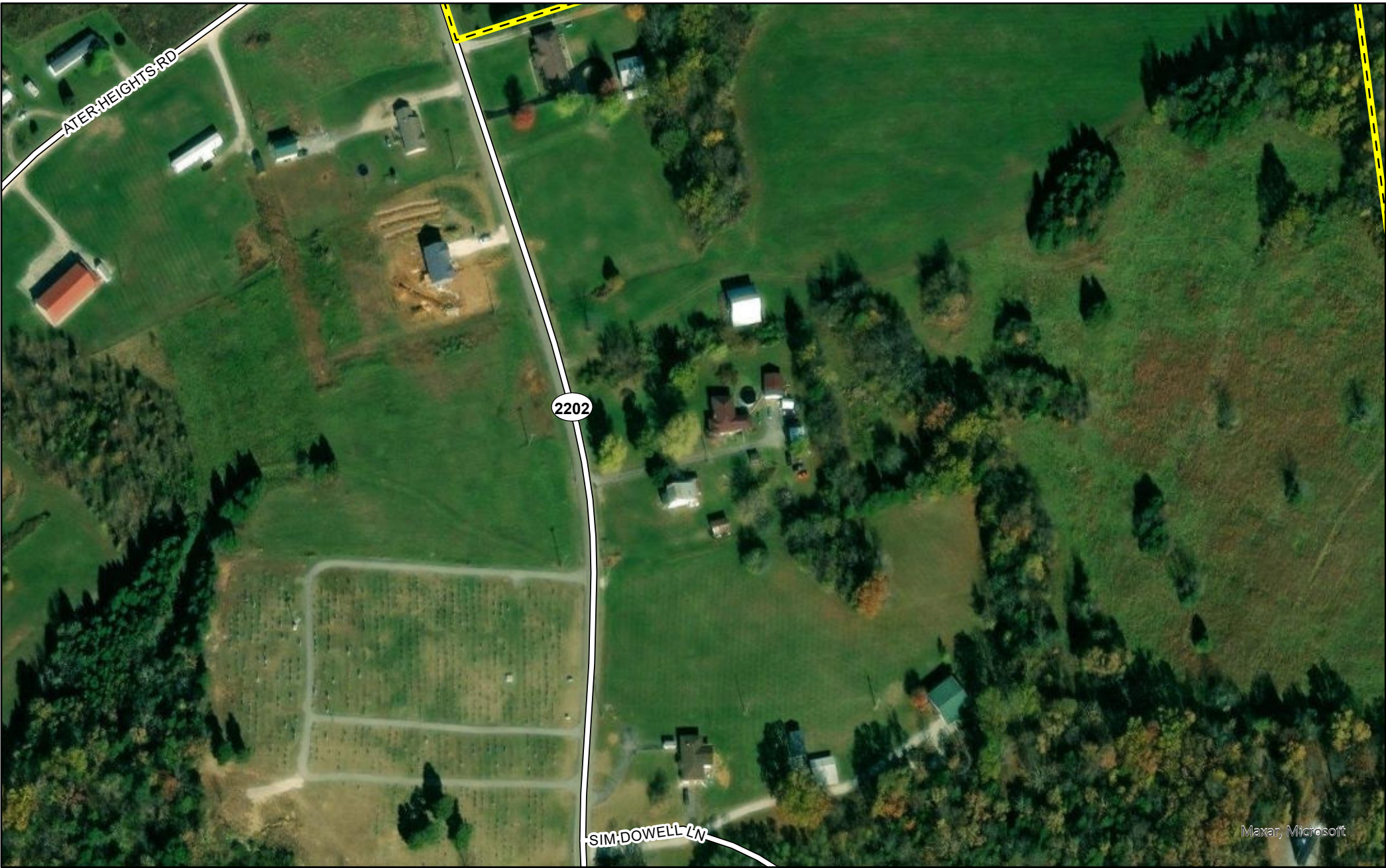


0 250 500 US Feet

**ATER HEIGHTS**

**2**



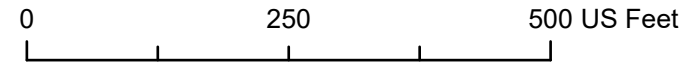


**CEDAR HILL CEMETERY**





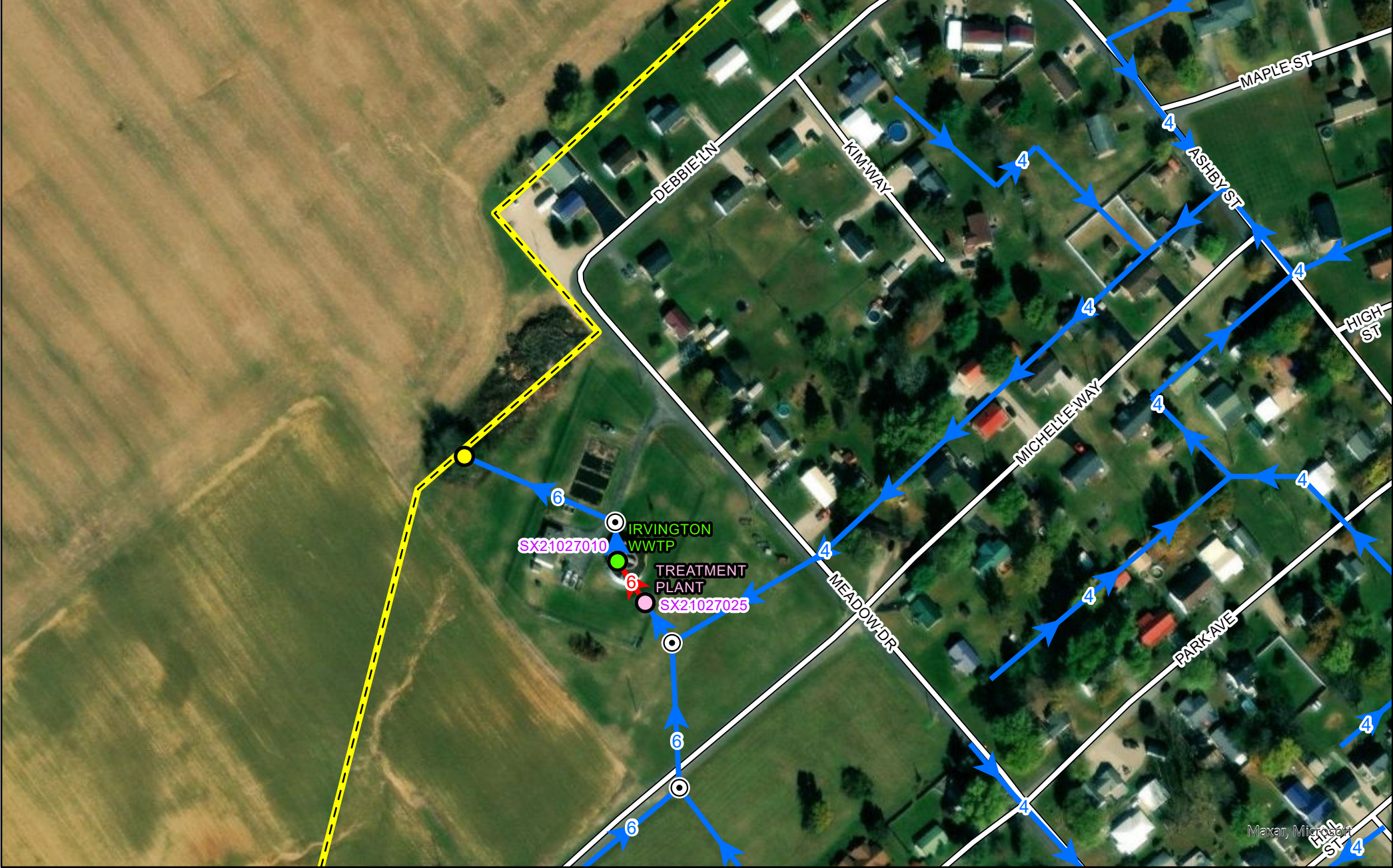
Maxar, Microsoft



**VALLEY TERRACE HIGH**

**4**





0 250 500 US Feet

TREATMENT PLANT

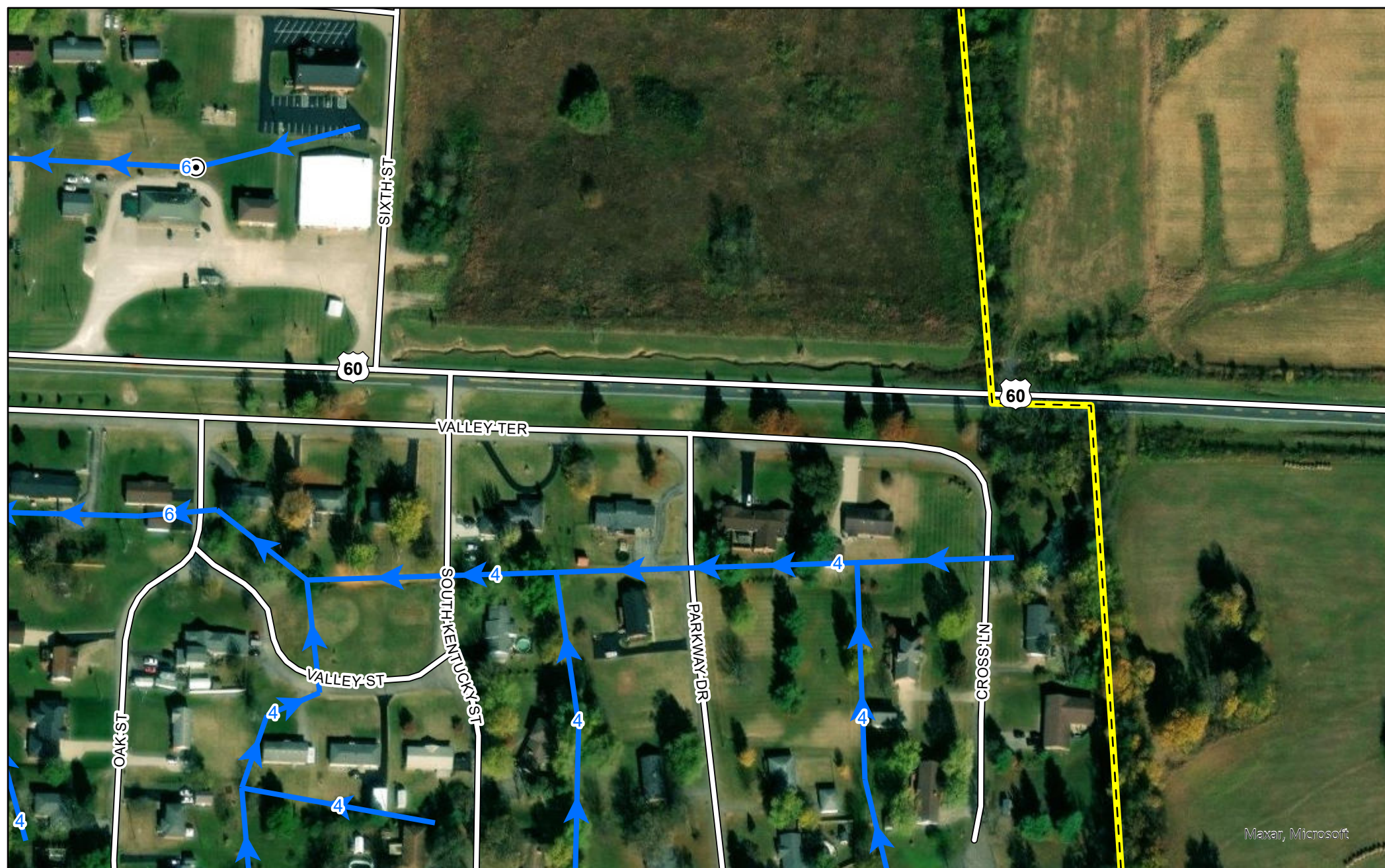












Maxar, Microsoft



0 250 500 US Feet

VALLEY TERRACE LOW





0 250 500 US Feet

PARK

9

Maxar, Microsoft

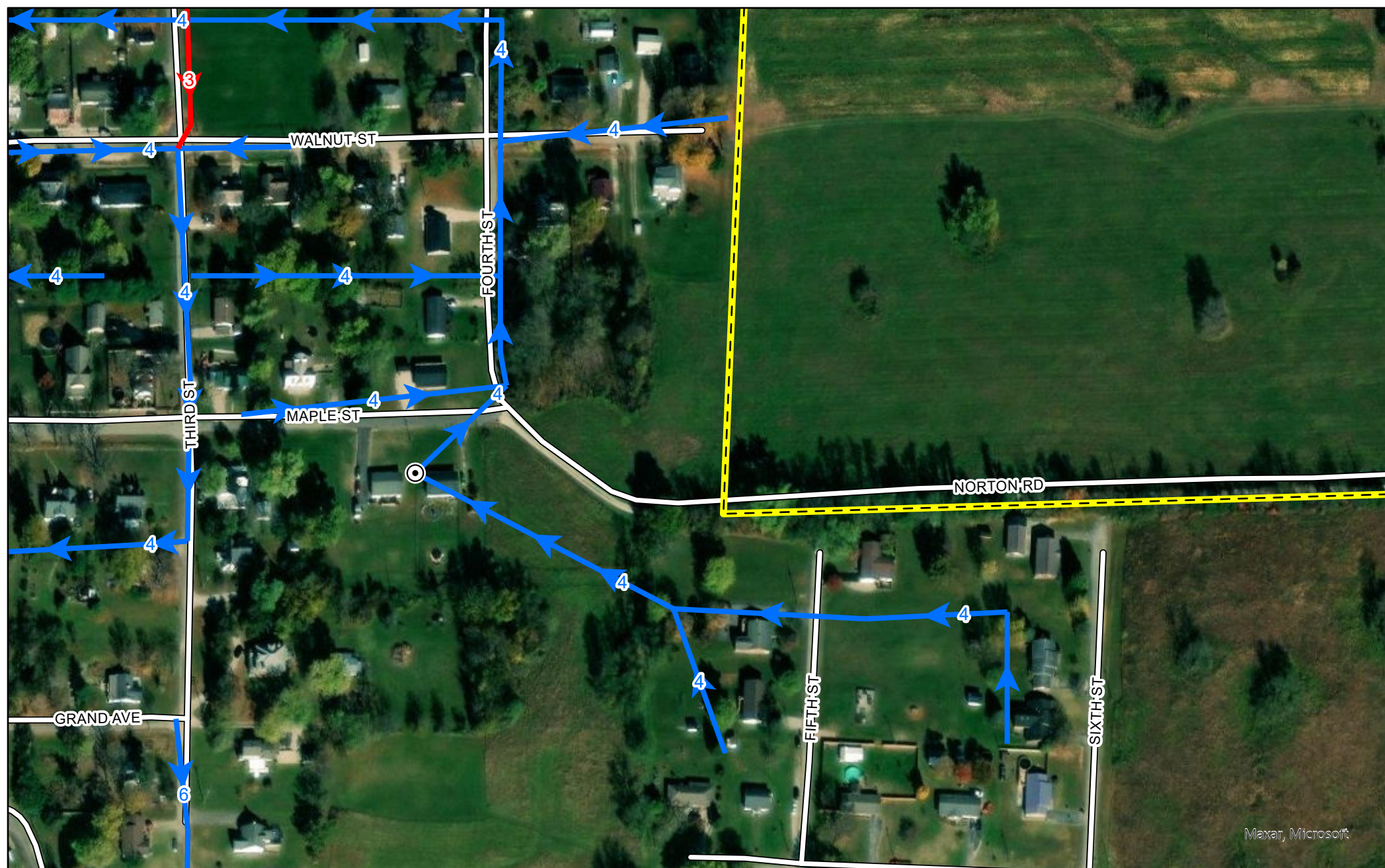




0 250 500 US Feet

DOWNTOWN





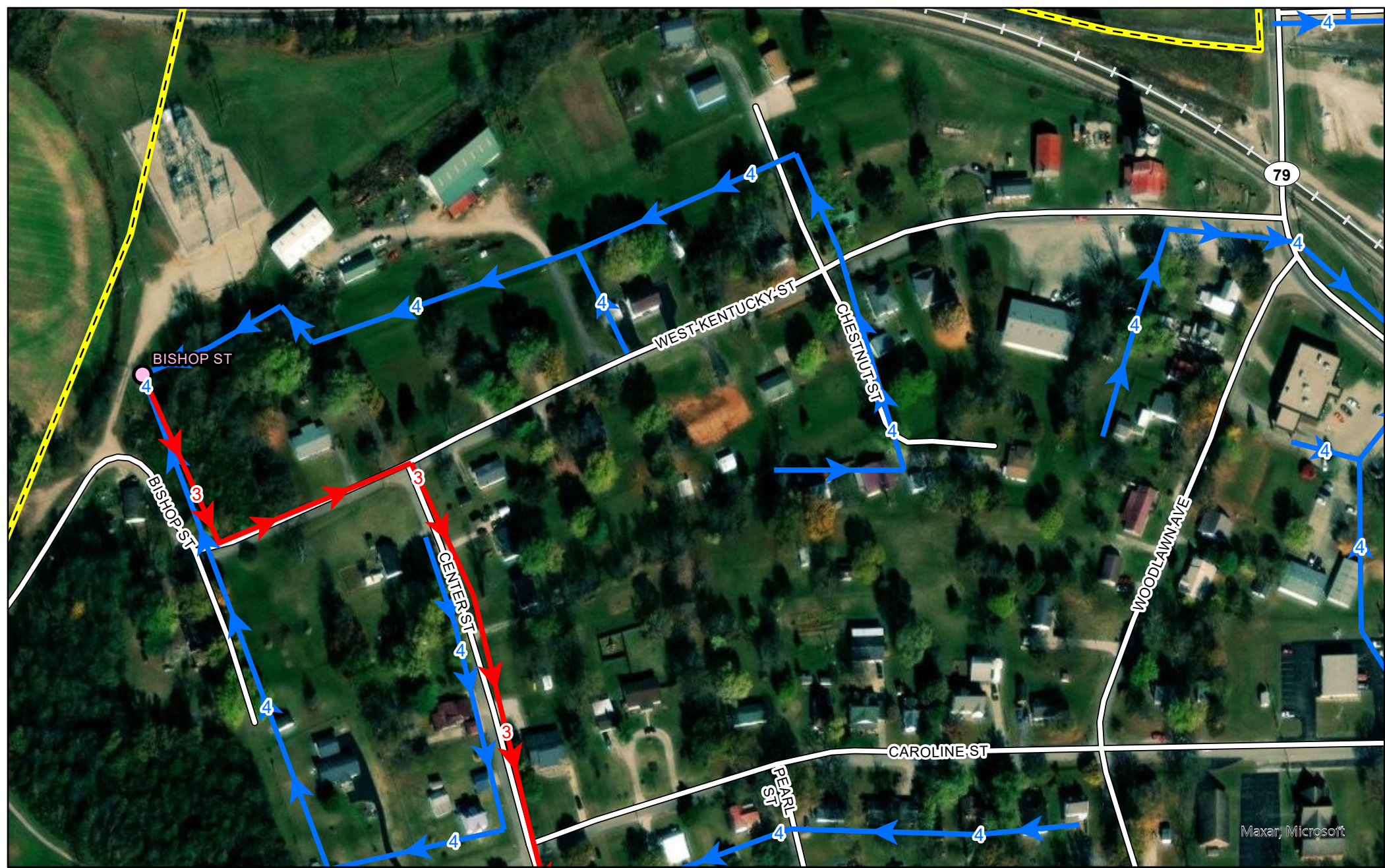
Maxar, Microsoft



0 250 500 US Feet

VALLEY VIEW

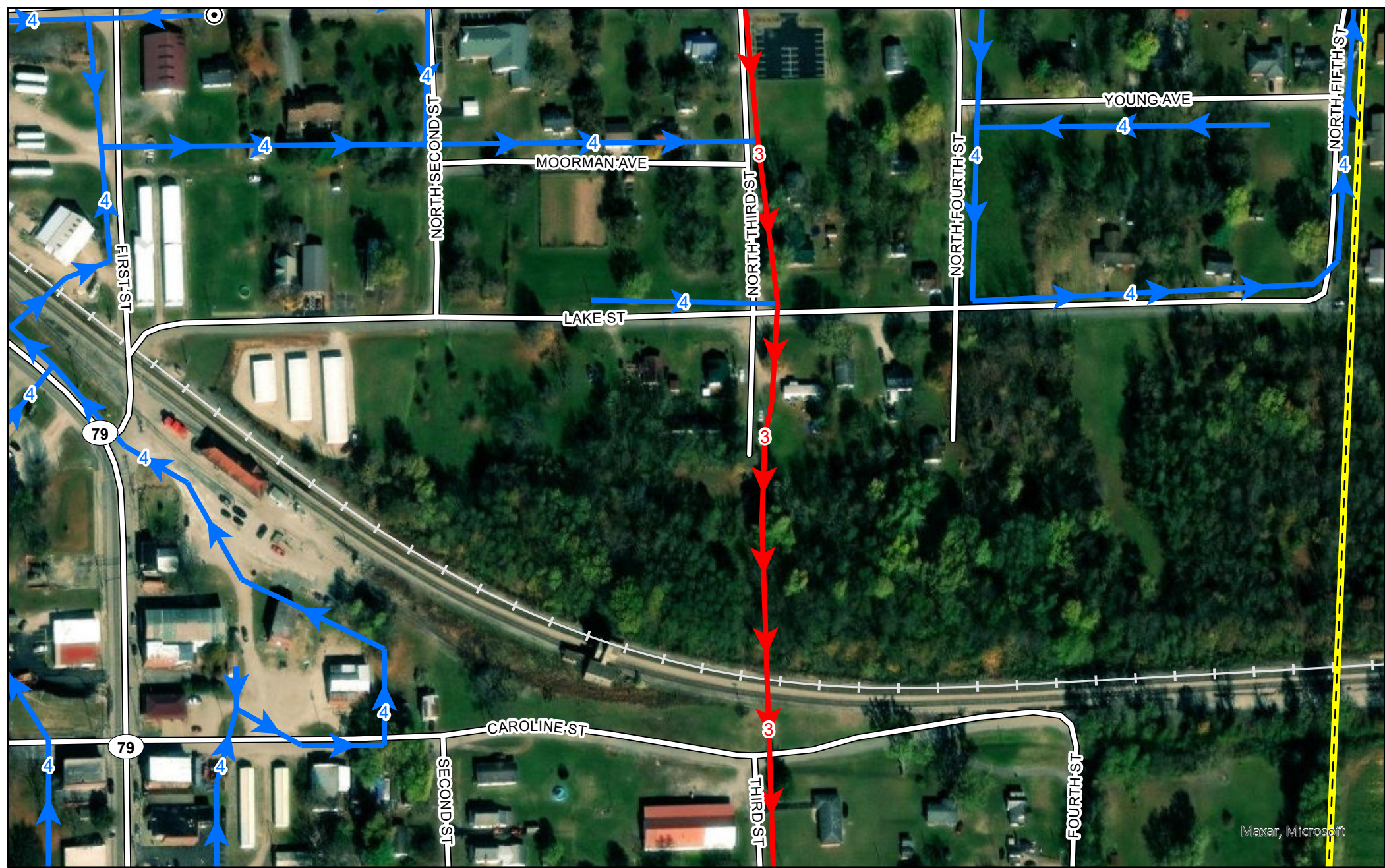




0 250 500 US Feet

FEED MILL





STATION

13





0 250 500 US Feet

KY 79 NORTH

14



