

Bardstown Small Urban Study

Environmental Justice and Community Impact Report



May 2007

Prepared By:

Lincoln Trail Area Development District
613 College Street Rd.
P.O. Box 604
Elizabethtown, KY 42702
(270) 769-2393



Table of Contents

1.0 Introduction.....	3
2.0 What is Environmental Justice?.....	3
2.1 Definitions.....	4
3.0 Methodology	4
4.0 Census Data Analysis	5
5.0 Study Findings	5
6.0 Study Findings / Population by Persons of Minority Origin	6
7.0 Study Findings / Population by Persons 65 and Over	7
8.0 Study Findings / Population by Persons Below Poverty Level	8
9.0 Conclusion	8
10.0 Bardstown Study Area Maps	9
10.1 2000 Census Block Groups.....	9
10.2 Minority Concentrations 2000 Census Block	10
10.3 65 & Older Concentrations 2000 Census Block	11
10.4 Poverty Concentrations 2000 Census Block Group	12
Appendix A: Planning Study Contact List	A-1
Appendix B: Methodology for Assessing Potential Environmental Justice Concerns for KYTC Planning Studies	B-1
Appendix C: Census Data Tables	C-1

1.0 Introduction

There is a slight variation in the impetus behind this study and its subsequent findings. Past environmental justice and community impact reports have been created in connection with a specific project relating to transportation improvement. This document, however, is simply an assessment of the community demographics and characteristics related to a defined study area without regard to a defined project.

The resources used to compile the data contained herein are the U.S. Census Bureau, Kentucky State Data Center, local elected officials, community leaders, and field observations of the study area. The information and results are intended to assist the Kentucky Transportation Cabinet in making informed and prudent decisions in the study area, particularly as it pertains to the requirements of Executive Order 12898¹, to ensure equal environmental protection to all groups potentially impacted by any project ensuing from the Small Urban Area study.

This report includes data tables comparing the populations of the census divisions directly in and around the study area at the county, state, and national levels. Statistics are provided for minority, elderly, and low-income populations for census tracts, block groups, and census blocks, except where not available. For ease of analysis, maps are included that highlight areas of interest at the block group or census block level.

2.0 What is Environmental Justice?

The U.S. EPA Office of Environmental Justice (EJ) defines EJ as:

“The fair treatment and meaningful involvement of all people regardless of race, color, national origin, or income with respect to the development, implementation and enforcement of environmental laws, regulations and policies. Fair treatment means that no group of people, including racial, ethnic, or socio-economic group should bear a disproportionate share of the negative environmental consequences resulting from industrial, municipal, and commercial operations or the execution of federal, state, local and tribal programs and policies.”

A disproportionately high and adverse effect on a minority or low-income population means and adverse effect that:

1. is predominately borne by a minority population and/or low-income population, or

¹ Executive Order 12898 signed on February 11, 1994 states “...each Federal agency shall make achieving environmental justice part of its mission by identifying and addressing, as appropriate, disproportionately high and adverse human health or environmental effects of its programs, policies, and activities on minority populations and low-income populations...”

2. will be suffered by the minority population and/or low-income population and is appreciably more severe or greater in magnitude than the adverse effect that will be suffered by the non-minority population and/or non-low-income population.

2.1 Definitions

USDOT Order 5610.2 on EJ, issued in the April 15, 1997 Federal Register defines what constitutes low-income and minority population.

- **Low-Income** is defined as a person whose median household income is at or below the U.S. Department of Health and Human Services poverty guidelines.
- **Minority** is defined as a person who is: (1) Black (a person having origins in any black racial groups of Africa); (2) Hispanic (a person of Mexican, Puerto Rican, Cuban, Central or South American, or other Spanish culture or origin, regardless of race); (3) Asian American (a person having origins in any of the original peoples of the Far East, Southeast Asia, the Indian subcontinent, or the Pacific Islands); or (4) American Indian and Alaskan Native (a person having origins in any of the original people of North America and who maintains cultural identification through tribal affiliation or community recognition).
- **Low-Income Population** is defined as any readily identifiable group of low-income persons who live in geographic proximity, and if circumstances warrant geographically dispersed/transient persons who will be similarly affected by a proposed DOT program, policy or activity.
- **Minority Population** is defined as any readily identifiable group of minority persons who live in geographic proximity, and if circumstances warrant, geographically dispersed/transient persons who will be similarly affected by a proposed DOT program, policy or activity.

EO12898 and USDOT Order 5610.2 do not address consideration of the elderly population. However, the U.S. DOT encourages the study of these populations in EJ discussions and in accordance with EJ, Title VI of the Civil Rights Act of 1964 and the Kentucky Transportation Cabinet's advocacy of inclusive public involvement and equal treatment of all persons this study includes statistics for persons age 65 and over that are within the study and comparison areas.

3.0 Methodology

For this study, data was collected by using the method outlined by the Kentucky Transportation Cabinet document, "Methodology for Assessing Potential Environmental Justice Concerns for KYTC Planning Studies." (See Appendix B.)

The primary sources of data used in the compilation of this report were the U.S. Census Bureau's 2000 Census, Kentucky State Data Center, local elected officials, community leaders, and field observations. Statistics were compiled to present a detailed analysis of the community conditions for the Bardstown Small Urban Area Study.

Block Group 2	1,536
Block Group 3	2,755
Census Tract 9903	13,252
Block Group 1	4,601
Block Group 2	2,130
Block Group 3	1,637
Block Group 4	1,041
Block Group 5	989
Block Group 6	2,854
Census Tract 9904	3,061
Block Group 1	823
Block Group 2	846
Block Group 3	1,392
Census Tract 9905	5,072
Block Group 1	2,699
Block Group 2	2,373

There are 617 Census Blocks that make up the area covered in this report. Of those blocks, 185 had a population of zero (0) at the time the data was collected. A comprehensive list of the remaining 428 blocks can be found with the census data in Appendix C.

6.0 Study Findings / Population by Persons of Minority Origin

As described in the census data, the “White Alone” population for the state of Kentucky is 90.1%, which is much higher than the national percentage of 75.1%. The total minority population for the state has been calculated and found to be 9.9%. The minority percentage for Nelson County is slightly lower than this value at 7.2%. However, the city of Bardstown far exceeds the county and state values with a percentage of 17.9%. Within the city there are four areas that warrant further discussion based on the density of minority persons per square mile.

The first of these areas is located in CT9903 BG1, north of KY 245 and east of US 31E. In this location, there are eleven census blocks with densities at or above 1,000 persons per square mile, including one with a high concentration of over 3,000 persons per square mile. As illustrated in Map 10.2, five census blocks contain over 30 individuals of minority origin.

The second area of interest is also located in CT9903 BG1, divided by US 62 and bordered by KY 605. Only three census blocks are shown to have densities at or above 1,000 persons per square mile, but another one has a high minority number in a much larger geographic area.

The third area is located in CT9903 BG6, north of US 150 and east of US 62. This appears to be the largest concentration of minority individuals in the entire study area. There are five census blocks with densities of over 1,000 persons per square mile, three others with more than 30 individuals of minority origin, and a total of 520 persons of minority origin.

The last area of interest is located in CT 9904 BG1 and 2, south of US 62 and east of US 31E. In this location, there are five census blocks with densities of over 1,000 persons per square mile and one more with 41 individuals of minority origin.

In accordance with the USDOT definition of *Minority*, all races were included in the minority concentration analysis. It is worth noting, though, that the Black or African American population makes up approximately 77% of the total minority population in Nelson County, 84% in Bardstown, and 77% in the defined study area. All of the other races have very low concentrations at county, city, census tract, and block group levels. Therefore, the areas indicated are highly representative of the Black or African American populations in the study area.

Also worth mentioning is the fact that Hispanic or Latino Origin persons may be of any race. When analyzed separately, though, these individuals were found to make up a very low percentage in the defined study area.

Map 10.2 displays the minority concentrations geographically.

7.0 Study Findings / Population by Persons 65 and Over

As described in the census data, the population percentage of Persons 65 and Over are very consistent at the national, state, and city levels – 12.4, 12.5, and 12.9%, respectively. The only variation is at the county level which has a percentage of 10.6%

Almost all of the census blocks with densities of at least 500 persons per square mile are located within one mile of the Bardstown town square. Two areas within the downtown concentration, though, appear to warrant further analysis.

The first area is located in CT9903 BG4, north of US 62 and west of US 31E. Five census blocks in this location have densities of over 1,000 persons per square mile. Several surrounding census blocks have densities of over 500 persons per square mile.

The second area of interest is located in CT9904 BG2 and 3, south of US 62 and intersected by US 31E. There are five census blocks with densities of over 1,000 persons per square mile surrounded by several other census blocks with 500 per square mile. This area appears to have the largest senior citizen population with one block containing 42 individuals and another with 125.

An isolated block in CT9902 BG3 may also be of some interest. It is located north of KY 332 and west of US 31E. This census block contains a very high density of over 3,000 persons per square mile and over 140 individuals 65 and over.

Map 10.3 displays the 65 and Over concentrations geographically.

8.0 Study Findings / Population by Persons Below Poverty Level

As described in the census data, the percentage of people in Kentucky below the poverty level is 15.4% – well above the national and county level of 12.0%. However, the city of Bardstown has a much higher value of 17.2% of its total population.

There is one main contiguous area of interest revealed from Map 10.4. This is the area bounded by KY 245, US 62, KY 605, the Bluegrass Parkway, US 150, US 62, N Fifth Street, and KY 1430. The area east of US 31E has a high density of at least 150 persons per square mile. The area west of US 31E has a density of at least 100 persons per square mile.

Also worth noting is the fact that CT9903 BG6 has the highest number (697) and percentage (24.4%) of persons below the poverty level in the defined study area.

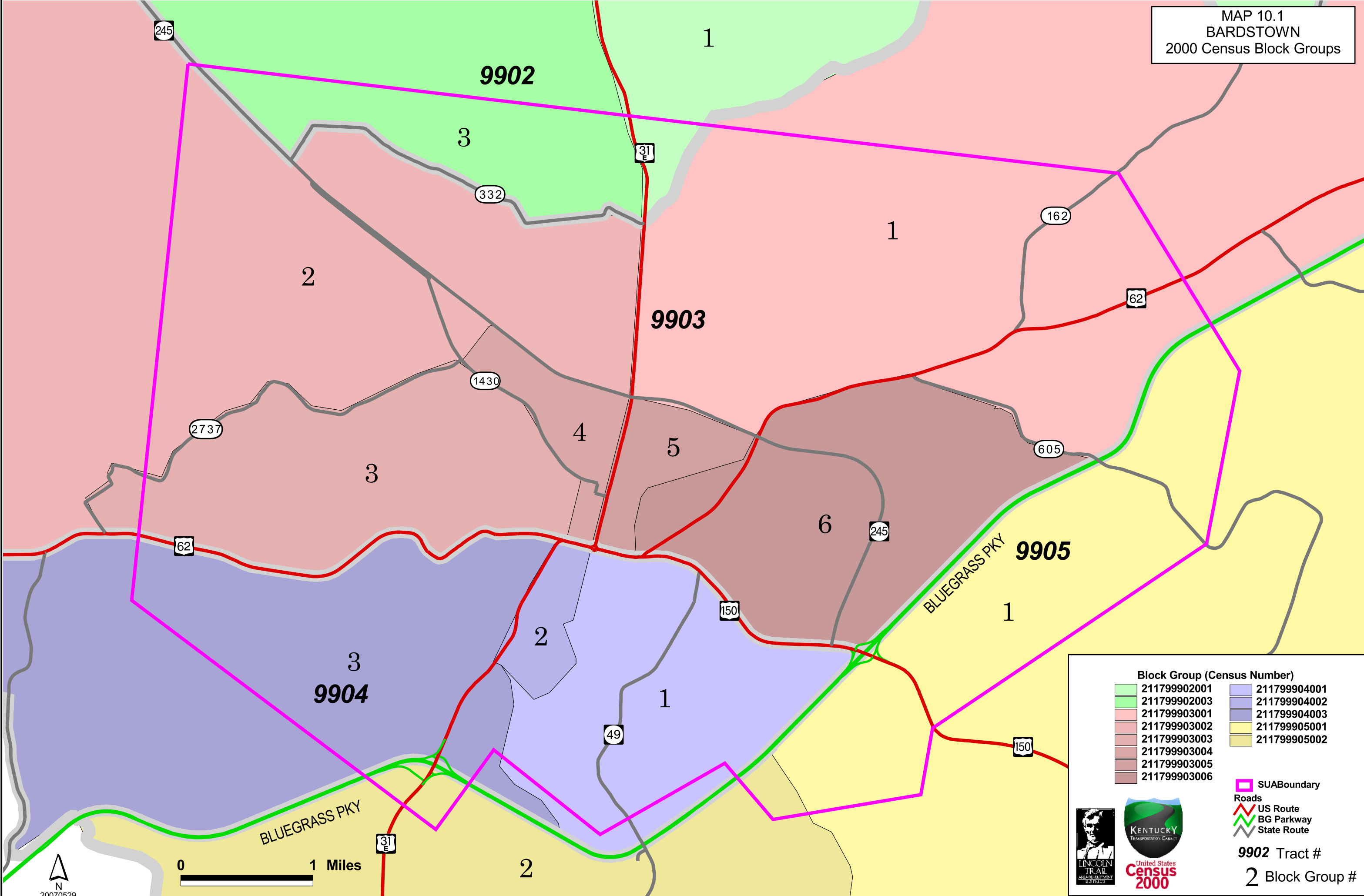
Map 10.4 displays the concentration of persons below the poverty level geographically.

9.0 Conclusion

After a comprehensive analysis of the Bardstown study area, there appear to be several areas of interest at the Block Group and Census Block level in regard to race, age, and income level. These areas have been described in the *Study Findings* sections of this report and can be deduced from the respective maps.

In an effort to validate the accuracy of the maps created by LTADD GIS staff, local officials and community members were asked to review them and provide any relevant information to this report. Based on their comments, it has been concluded that the maps are representative of the locations of interest in the study area and that individuals in those areas could stand to benefit from projects that improve transportation options in Bardstown.

It is evident from the data that there are several locations that need to be monitored and taken into consideration when planning for a specific project. LTADD staff will continue to monitor those locations, as well as the surrounding study area for demographic and / or socioeconomic changes that may occur throughout the development of a project or program.

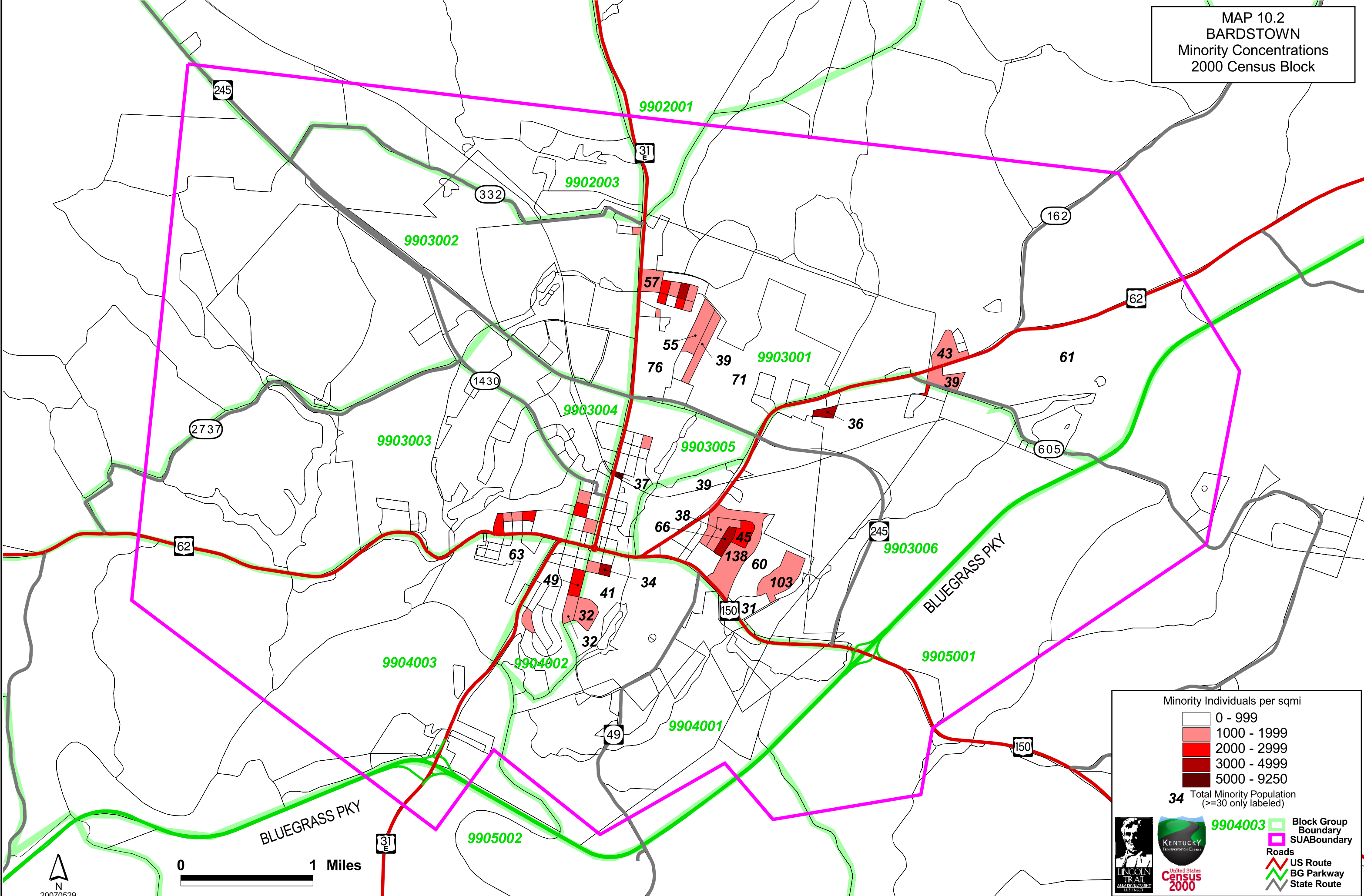


Block Group (Census Number)	
	211799902001
	211799902003
	211799903001
	211799903002
	211799903003
	211799903004
	211799903005
	211799903006
	211799904001
	211799904002
	211799904003
	211799905001
	211799905002

	SUABoundary
Roads	
	US Route
	BG Parkway
	State Route

9902 Tract #
 2 Block Group #

MAP 10.2
 BARDSTOWN
 Minority Concentrations
 2000 Census Block



Minority Individuals per sqmi

White	0 - 999
Light Red	1000 - 1999
Red	2000 - 2999
Dark Red	3000 - 4999
Black	5000 - 9250

34 Total Minority Population
 (>=30 only labeled)

9904003 Block Group Boundary

SUABoundary

Roads

US Route

BG Parkway

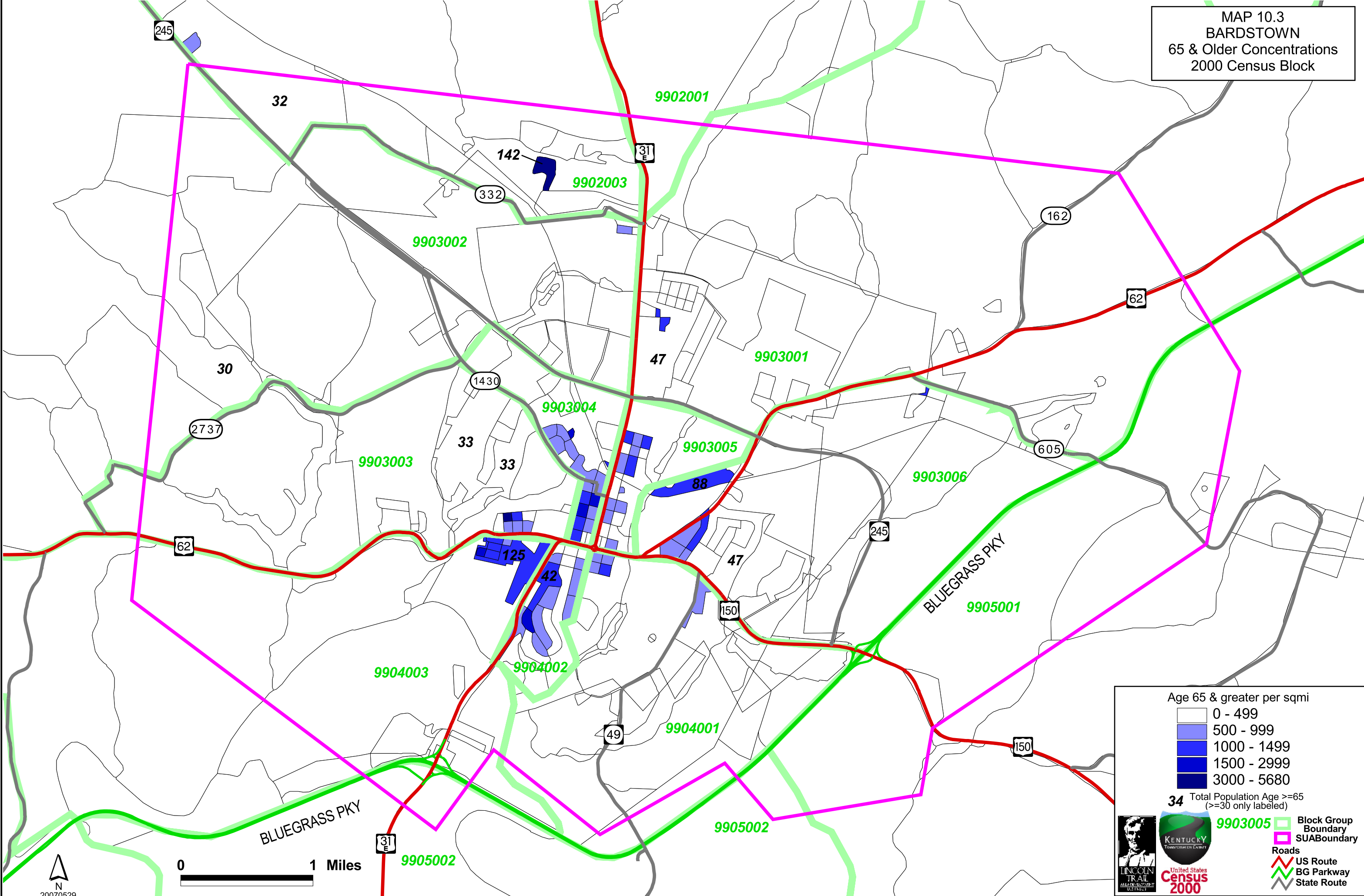
State Route



0 1 Miles



MAP 10.3
 BARDSTOWN
 65 & Older Concentrations
 2000 Census Block



34 Total Population Age >=65
 (>=30 only labeled)

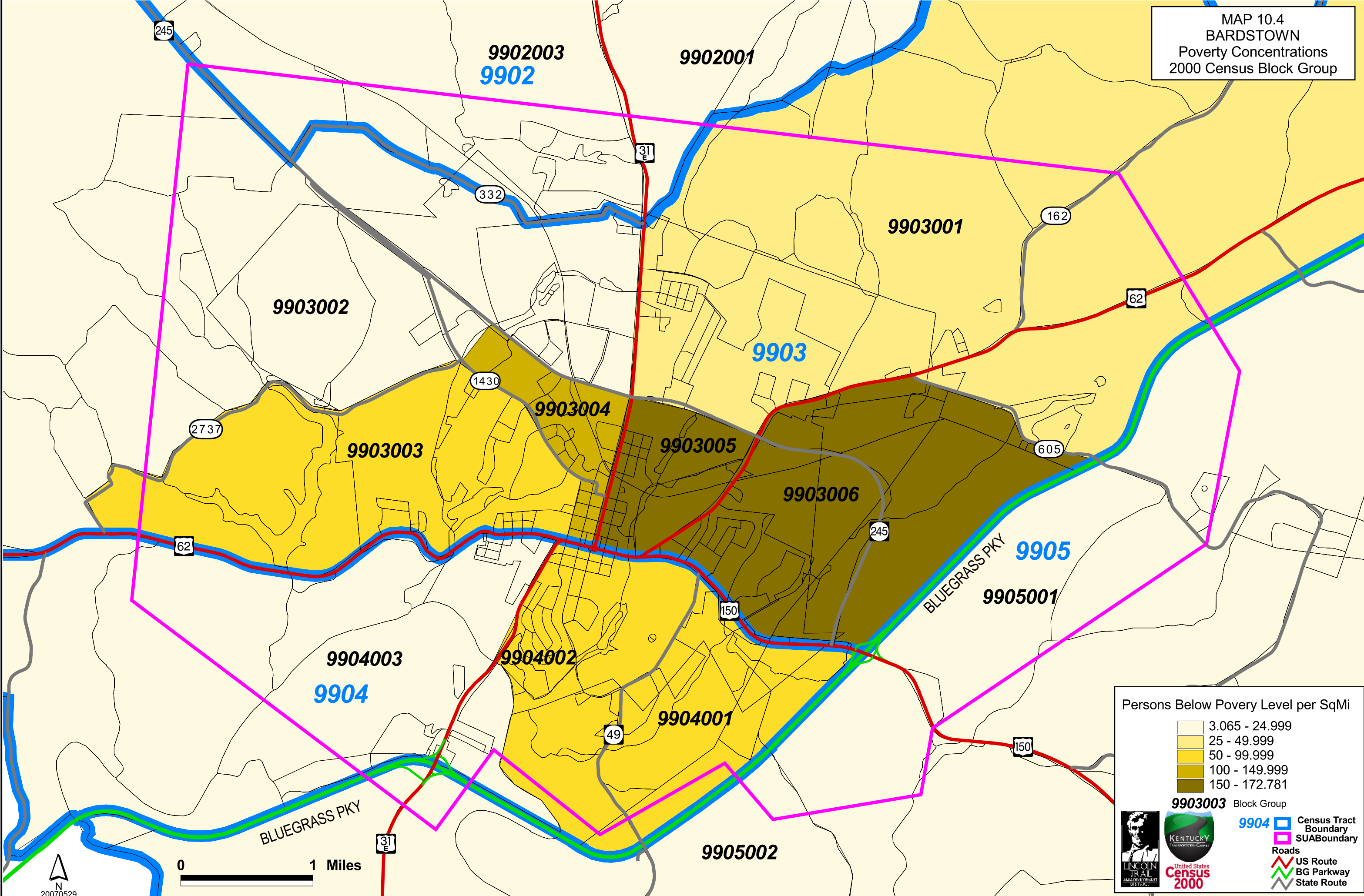
9903005

- Block Group Boundary
- SUA Boundary
- Roads
 - US Route
 - BG Parkway
 - State Route

0 1 Miles

20070529

MAP 10.4
 BARDSTOWN
 Poverty Concentrations
 2000 Census Block Group



Persons Below Poverty Level per SqMi

Lightest Yellow	3.065 - 24.999
Light Yellow	25 - 49.999
Yellow	50 - 99.999
Dark Yellow	100 - 149.999
Dark Brown	150 - 172.781

9903003 Block Group

9904

- Blue outline: Census Tract Boundary
- Pink outline: SUABoundary
- Red line: US Route
- Green line: BG Parkway
- Grey line: State Route

Appendix A: Planning Study Contact List

Honorable Dean Watts
Nelson Co. Judge Executive
P.O. Box 578
1 Court Square, 2nd Floor
Bardstown, KY 40004

Ms. Barbara Tichenor
Nelson Co. PVA
113 E. Stephen Foster Avenue
Bardstown, KY 40004

Ms. Janet Johnston, Director
Nelson Co. Joint Planning Commission
P.O. Box 402, 2nd Floor
1 Court Square
Bardstown, KY 40004

Mr. Dick Heaton
Mayor of Bardstown
220 N. Fifth Street
Bardstown, KY 40004

Mr. Don Noblin
Lincoln Trail Career Center
860 W. Stephen Foster Avenue
Bardstown, KY 40004

Ms. Glenda Parrent
Bardstown Senior Center
509 N. Fourth Street
Bardstown, KY 40004

Methodology for Assessing Potential Environmental Justice Concerns for KYTC Planning Studies

Updated: February 1, 2002

The demographics of the affected area should be defined using U.S. Census data (Census tracts and block groups) and the percentages for minorities, low-income, elderly, or disabled populations should be compared to those for the following:

- Other nearby Census tracts and block groups,
- The county as a whole,
- The entire state, and
- The United States.

Information from PVA offices, social service agencies, local health organizations, local public agencies, and community action agencies can be used to supplement the Census data. Specifically, we are interested in obtaining the following information:

- Identification of community leaders or other contacts who may be able to represent these population groups and through which coordination efforts can be made.
- Comparison of the Census tracts and block groups encompassing the project area to other nearby Census tracts and block groups, county, state, and United States percentages.
- Locations of specific or identified minority, low-income, elderly, or disabled population groups within or near the project area. This may require some field reviews and/or discussions with knowledgeable persons to identify locations of public housing, minority communities, ethnic communities, etc., to verify Census data or identify changes that may have occurred since the last Census. Examples would be changes due to new residential developments in the area or increases in Asian and/or Hispanic populations.
- Concentrations or communities that share a common religious, cultural, ethnic, or other background, e.g., Amish communities.
- Communities or neighborhoods that exhibit a high degree of community cohesion or interaction and the ability to mobilize community actions at the start of community involvement.
- Concentrations of common employment, religious centers, and/or educational institutions with members within walking distance of facilities.
- Potential effects, both positive and negative, of the project on the affected groups as compared to the non-target groups. This may include, but are not limited to:
 1. Access to services, employment or transportation.
 2. Displacement of persons, businesses, farms, or non-profit organizations.
 3. Disruption of community cohesion or vitality.
 4. Effects to human health and/or safety.
- Possible methods to minimize or avoid impacts on the target population groups.

If percentages of these populations are elevated within the project area, it should be brought to the attention of the Division of Planning immediately so that coordination with affected populations may be conducted to determine the affected population's concerns and comments on the project. Also, with this effort, representatives of minority, elderly, low-income, or disabled populations should be identified so that, together, we can build a partnership for the region that may be incorporated into other projects. Also, we hope to build a Commonwealth-wide database of contacts. We are available to participate in any meetings with these affected populations or with their community leaders or representatives.

In identifying communities, agencies may consider as a community either a group of individuals living in geographic proximity to one another, or a geographically dispersed/transient set of individuals (such as migrant workers or Native Americans), where either type of group experiences common conditions of environmental exposure or effect. The selection of the appropriate unit of analysis may be a governing body's jurisdiction, a neighborhood, census tract, or other similar unit that is to be chosen so as not to artificially dilute or inflate the affected population. A target population also exists if there is (1) more than one minority or other group present and (2) the percentages, as calculated by aggregating all minority persons, exceed that of the general population or other appropriate unit of geographic analysis.

Maps should be included that show the Census tracts and block groups included in the analysis as well as the relation of the project area to those Census tracts and block groups.

Bardstown Study Area Census Data

	Total	White Alone	White Alone	Black or African American alone	Black or African American alone	American Indian and Alaska Native alone	American Indian and Alaska Native alone	Asian alone	Asian alone	Native Hawaiian and other Pacific Islander alone	Native Hawaiian and other Pacific Islander alone
United States	281,421,906	211,460,626	75.1%	34,658,190	12.3%	2,475,956	0.9%	10,242,998	3.6%	398,835	0.1%
Kentucky	4,041,769	3,640,889	90.1%	295,994	7.3%	8,616	0.2%	29,744	0.7%	1,460	0.0%
Nelson County	37,477	34,792	92.8%	2,064	5.5%	48	0.1%	193	0.5%	7	0.0%
Bardstown	10,374	8,518	82.1%	1,563	15.1%	13	0.1%	98	0.9%	1	0.0%
Tract 9902	6,260	6,099	97.4%	96	1.5%	11	0.2%	19	0.3%	2	0.0%
Block Group 1	1,899	1,821	95.9%	52	2.7%	4	0.2%	5	0.3%	0	0.0%
Block Group 2	1,536	1,472	77.5%	8	0.4%	0	0.0%	30	1.6%	0	0.0%
Block Group 3	2,755	2,711	98.4%	15	0.5%	4	0.1%	14	0.5%	1	0.0%
Tract 9903	13,252	11,515	86.9%	1,419	10.7%	18	0.1%	97	0.7%	1	0.0%
Block Group 1	4,601	3,975	86.4%	543	11.8%	7	0.2%	22	0.5%	0	0.0%
Block Group 2	2,130	2,059	96.7%	51	2.4%	0	0.0%	17	0.8%	0	0.0%
Block Group 3	1,637	1,502	91.8%	83	5.1%	4	0.2%	15	0.9%	0	0.0%
Block Group 4	1,041	930	89.3%	72	6.9%	3	0.3%	9	0.9%	0	0.0%
Block Group 5	989	836	84.5%	108	10.9%	2	0.2%	4	0.4%	1	0.1%
Block Group 6	2,854	2,213	77.5%	562	19.7%	2	0.1%	30	1.1%	0	0.0%
Tract 9904	3,061	2,640	86.2%	342	11.2%	2	0.1%	49	1.6%	0	0.0%
Block Group 1	823	689	83.7%	118	14.3%	0	0.0%	0	0.0%	0	0.0%
Block Group 2	846	678	80.1%	133	15.7%	0	0.0%	30	3.5%	0	0.0%
Block Group 3	1,392	1,273	91.5%	91	6.5%	2	0.1%	19	1.4%	0	0.0%
Tract 9905	5,072	4,965	97.9%	56	1.1%	9	0.2%	17	0.3%	2	0.0%
Block Group 1	2,699	2,629	97.4%	43	1.6%	4	0.1%	6	0.2%	1	0.0%
Block Group 2	2,373	2,336	98.4%	13	0.5%	5	0.2%	11	0.5%	1	0.0%

Source: US Census Bureau, 2000 Census

Bardstown Study Area Census Data

	Some other race alone	Some other race alone	Two or more races	Two or more races	Hispanic or Latino Origin	Hispanic or Latino Origin	Persons 65 and Over	Persons 65 and Over	Persons Below Poverty Level	Persons Below Poverty Level
United States	15,359,073	5.5%	6,826,228	2.4%	35,238,481	12.5%	34,991,753	12.4%	33,899,812	12.0%
Kentucky	22,623	0.6%	42,443	1.1%	56,414	1.4%	504,793	12.5%	621,096	15.4%
Nelson County	138	0.4%	235	0.6%	284	0.8%	3,983	10.6%	4,497	12.0%
Bardstown	70	0.7%	111	1.1%	143	1.4%	1,341	12.9%	1,781	17.2%
Tract 9902	10	0.2%	23	0.4%	11	0.2%	708	11.3%	543	8.7%
Block Group 1	4	0.2%	13	0.7%	11	0.6%	134	7.1%	194	10.2%
Block Group 2	0	0.0%	26	1.4%	0	0.0%	283	18.4%	127	6.7%
Block Group 3	0	0.0%	10	0.4%	0	0.0%	329	11.9%	222	8.1%
Tract 9903	67	0.5%	135	1.0%	180	1.4%	1,211	9.1%	1,828	13.8%
Block Group 1	16	0.3%	38	0.8%	47	1.0%	254	5.5%	532	11.6%
Block Group 2	0	0.0%	3	0.1%	13	0.6%	172	8.1%	113	5.3%
Block Group 3	10	0.6%	23	1.4%	23	1.4%	135	8.2%	303	18.5%
Block Group 4	18	1.7%	9	0.9%	50	4.8%	206	19.8%	80	7.7%
Block Group 5	10	1.0%	28	2.8%	15	1.5%	154	15.6%	103	10.4%
Block Group 6	13	0.5%	34	1.2%	32	1.1%	290	10.2%	697	24.4%
Tract 9904	11	0.4%	17	0.6%	18	0.6%	560	18.3%	422	13.8%
Block Group 1	8	1.0%	8	1.0%	0	0.0%	123	14.9%	178	21.6%
Block Group 2	2	0.2%	3	0.4%	0	0.0%	188	22.2%	29	3.4%
Block Group 3	1	0.1%	6	0.4%	18	1.3%	249	17.9%	215	15.4%
Tract 9905	8	0.2%	15	0.3%	0	0.0%	347	6.8%	255	5.0%
Block Group 1	8	0.3%	8	0.3%	0	0.0%	175	6.5%	102	3.8%
Block Group 2	0	0.0%	7	0.3%	0	0.0%	172	7.2%	153	6.4%

Bardstown Study Area Census Data

	Total	White Alone	White Alone	Black or African American alone	Black or African American alone	American Indian and Alaska Native alone	American Indian and Alaska Native alone	Asian alone	Asian alone	Native Hawaiian and other Pacific Islander alone	Native Hawaiian and other Pacific Islander alone
Tract 9902	6,260	6,099	97.4%	96	1.5%	11	0.2%	19	0.3%	2	0.0%
Block 1000	12	12	100.0%	0	0.0%	0	0.0%	0	0.0%	0	0.0%
Block 1003	41	38	92.7%	3	7.3%	0	0.0%	0	0.0%	0	0.0%
Block 1004	12	12	100.0%	0	0.0%	0	0.0%	0	0.0%	0	0.0%
Block 1006	13	13	100.0%	0	0.0%	0	0.0%	0	0.0%	0	0.0%
Block 1009	3	3	100.0%	0	0.0%	0	0.0%	0	0.0%	0	0.0%
Block 1011	13	13	100.0%	0	0.0%	0	0.0%	0	0.0%	0	0.0%
Block 1013	3	3	100.0%	0	0.0%	0	0.0%	0	0.0%	0	0.0%
Block 1014	89	87	97.8%	2	2.2%	0	0.0%	0	0.0%	0	0.0%
Block 1015	3	3	100.0%	0	0.0%	0	0.0%	0	0.0%	0	0.0%
Block 1016	15	15	100.0%	0	0.0%	0	0.0%	0	0.0%	0	0.0%
Block 1017	10	3	30.0%	7	70.0%	0	0.0%	0	0.0%	0	0.0%
Block 1018	13	13	100.0%	0	0.0%	0	0.0%	0	0.0%	0	0.0%
Block 1019	18	18	100.0%	0	0.0%	0	0.0%	0	0.0%	0	0.0%
Block 1020	6	6	100.0%	0	0.0%	0	0.0%	0	0.0%	0	0.0%
Block 1021	3	3	100.0%	0	0.0%	0	0.0%	0	0.0%	0	0.0%
Block 1022	5	4	80.0%	1	20.0%	0	0.0%	0	0.0%	0	0.0%
Block 1024	2	2	100.0%	0	0.0%	0	0.0%	0	0.0%	0	0.0%
Block 1025	110	110	100.0%	0	0.0%	0	0.0%	0	0.0%	0	0.0%
Block 1026	176	172	97.7%	4	2.3%	0	0.0%	0	0.0%	0	0.0%
Block 1027	2	1	50.0%	1	50.0%	0	0.0%	0	0.0%	0	0.0%
Block 1028	46	43	93.5%	3	6.5%	0	0.0%	0	0.0%	0	0.0%
Block 1029	66	66	100.0%	0	0.0%	0	0.0%	0	0.0%	0	0.0%
Block 1030	72	72	100.0%	0	0.0%	0	0.0%	0	0.0%	0	0.0%
Block 1032	37	34	91.9%	3	8.1%	0	0.0%	0	0.0%	0	0.0%
Block 1033	23	22	95.7%	0	0.0%	0	0.0%	0	0.0%	0	0.0%
Block 1034	50	50	100.0%	0	0.0%	0	0.0%	0	0.0%	0	0.0%
Block 1037	61	61	100.0%	0	0.0%	0	0.0%	0	0.0%	0	0.0%
Block 1039	51	50	98.0%	0	0.0%	0	0.0%	1	2.0%	0	0.0%
Block 1040	4	4	100.0%	0	0.0%	0	0.0%	0	0.0%	0	0.0%
Block 1042	51	51	100.0%	0	0.0%	0	0.0%	0	0.0%	0	0.0%
Block 1044	7	7	100.0%	0	0.0%	0	0.0%	0	0.0%	0	0.0%
Block 1045	3	3	100.0%	0	0.0%	0	0.0%	0	0.0%	0	0.0%

Bardstown Study Area Census Data

	Some other race alone	Some other race alone	Two or more races	Two or more races	Hispanic or Latino Origin	Hispanic or Latino Origin	Persons 65 and Over	Persons 65 and Over	Persons Below Poverty Level	Persons Below Poverty Level
Tract 9902	10	0.2%	23	0.4%	11	0.2%	708	11.3%	543	8.7%
Block 1000	0	0.0%	0	0.0%	0	0.0%	1	8.3%		
Block 1003	0	0.0%	0	0.0%	2	4.9%	4	9.8%		
Block 1004	0	0.0%	0	0.0%	0	0.0%	2	16.7%		
Block 1006	0	0.0%	0	0.0%	0	0.0%	3	23.1%		
Block 1009	0	0.0%	0	0.0%	0	0.0%	0	0.0%		
Block 1011	0	0.0%	0	0.0%	0	0.0%	1	7.7%		
Block 1013	0	0.0%	0	0.0%	0	0.0%	0	0.0%		
Block 1014	0	0.0%	0	0.0%	0	0.0%	5	5.6%		
Block 1015	0	0.0%	0	0.0%	0	0.0%	0	0.0%		
Block 1016	0	0.0%	0	0.0%	0	0.0%	2	13.3%		
Block 1017	0	0.0%	0	0.0%	0	0.0%	2	20.0%		
Block 1018	0	0.0%	0	0.0%	0	0.0%	0	0.0%		
Block 1019	0	0.0%	0	0.0%	0	0.0%	4	22.2%		
Block 1020	0	0.0%	0	0.0%	0	0.0%	2	33.3%		
Block 1021	0	0.0%	0	0.0%	0	0.0%	0	0.0%		
Block 1022	0	0.0%	0	0.0%	0	0.0%	0	0.0%		
Block 1024	0	0.0%	0	0.0%	0	0.0%	0	0.0%		
Block 1025	0	0.0%	0	0.0%	0	0.0%	9	8.2%		
Block 1026	0	0.0%	0	0.0%	1	0.6%	11	6.3%		
Block 1027	0	0.0%	0	0.0%	0	0.0%	0	0.0%		
Block 1028	0	0.0%	0	0.0%	0	0.0%	2	4.3%		
Block 1029	0	0.0%	0	0.0%	0	0.0%	6	9.1%		
Block 1030	0	0.0%	0	0.0%	0	0.0%	6	8.3%		
Block 1032	0	0.0%	0	0.0%	0	0.0%	1	2.7%		
Block 1033	0	0.0%	1	4.3%	0	0.0%	0	0.0%		
Block 1034	0	0.0%	0	0.0%	0	0.0%	0	0.0%		
Block 1037	0	0.0%	0	0.0%	2	3.3%	5	8.2%		
Block 1039	0	0.0%	0	0.0%	3	5.9%	1	2.0%		
Block 1040	0	0.0%	0	0.0%	0	0.0%	0	0.0%		
Block 1042	0	0.0%	0	0.0%	0	0.0%	7	13.7%		
Block 1044	0	0.0%	0	0.0%	0	0.0%	1	14.3%		
Block 1045	0	0.0%	0	0.0%	0	0.0%	0	0.0%		

Bardstown Study Area Census Data

	Total	White Alone	White Alone	Black or African American alone	Black or African American alone	American Indian and Alaska Native alone	American Indian and Alaska Native alone	Asian alone	Asian alone	Native Hawaiian and other Pacific Islander alone	Native Hawaiian and other Pacific Islander alone
Block 1046	68	65	95.6%	1	1.5%	0	0.0%	0	0.0%	0	0.0%
Block 1048	64	61	95.3%	3	4.7%	0	0.0%	0	0.0%	0	0.0%
Block 1050	17	17	100.0%	0	0.0%	0	0.0%	0	0.0%	0	0.0%
Block 1051	3	3	100.0%	0	0.0%	0	0.0%	0	0.0%	0	0.0%
Block 1052	131	131	100.0%	0	0.0%	0	0.0%	0	0.0%	0	0.0%
Block 1053	151	138	91.4%	13	8.6%	0	0.0%	0	0.0%	0	0.0%
Block 1054	10	10	100.0%	0	0.0%	0	0.0%	0	0.0%	0	0.0%
Block 1055	61	60	98.4%	0	0.0%	1	1.6%	0	0.0%	0	0.0%
Block 1056	18	18	100.0%	0	0.0%	0	0.0%	0	0.0%	0	0.0%
Block 1057	45	32	71.1%	7	15.6%	3	6.7%	0	0.0%	0	0.0%
Block 1058	13	13	100.0%	0	0.0%	0	0.0%	0	0.0%	0	0.0%
Block 1059	246	229	93.1%	4	1.6%	0	0.0%	4	1.6%	0	0.0%
Block 1060	2	2	100.0%	0	0.0%	0	0.0%	0	0.0%	0	0.0%
Block 1062	50	48	96.0%	0	0.0%	0	0.0%	0	0.0%	0	0.0%
Block 2000	32	32	100.0%	0	0.0%	0	0.0%	0	0.0%	0	0.0%
Block 2001	131	117	89.3%	10	7.6%	1	0.8%	0	0.0%	0	0.0%
Block 2002	9	8	88.9%	0	0.0%	0	0.0%	0	0.0%	1	11.1%
Block 2003	5	5	100.0%	0	0.0%	0	0.0%	0	0.0%	0	0.0%
Block 2004	4	4	100.0%	0	0.0%	0	0.0%	0	0.0%	0	0.0%
Block 2005	3	3	100.0%	0	0.0%	0	0.0%	0	0.0%	0	0.0%
Block 2006	47	47	100.0%	0	0.0%	0	0.0%	0	0.0%	0	0.0%
Block 2007	22	22	100.0%	0	0.0%	0	0.0%	0	0.0%	0	0.0%
Block 2008	148	141	95.3%	7	4.7%	0	0.0%	0	0.0%	0	0.0%
Block 2009	133	133	100.0%	0	0.0%	0	0.0%	0	0.0%	0	0.0%
Block 2010	3	3	100.0%	0	0.0%	0	0.0%	0	0.0%	0	0.0%
Block 2011	94	93	98.9%	1	1.1%	0	0.0%	0	0.0%	0	0.0%
Block 2012	220	210	95.5%	5	2.3%	2	0.9%	0	0.0%	0	0.0%
Block 2013	14	14	100.0%	0	0.0%	0	0.0%	0	0.0%	0	0.0%
Block 2014	125	125	100.0%	0	0.0%	0	0.0%	0	0.0%	0	0.0%
Block 2016	69	69	100.0%	0	0.0%	0	0.0%	0	0.0%	0	0.0%
Block 2017	54	54	100.0%	0	0.0%	0	0.0%	0	0.0%	0	0.0%
Block 2018	9	9	100.0%	0	0.0%	0	0.0%	0	0.0%	0	0.0%
Block 2019	71	71	100.0%	0	0.0%	0	0.0%	0	0.0%	0	0.0%

Bardstown Study Area Census Data

	Some other race alone	Some other race alone	Two or more races	Two or more races	Hispanic or Latino Origin	Hispanic or Latino Origin	Persons 65 and Over	Persons 65 and Over	Persons Below Poverty Level	Persons Below Poverty Level
Block 1046	0	0.0%	2	2.9%	0	0.0%	5	7.4%		
Block 1048	0	0.0%	0	0.0%	0	0.0%	3	4.7%		
Block 1050	0	0.0%	0	0.0%	0	0.0%	2	11.8%		
Block 1051	0	0.0%	0	0.0%	0	0.0%	0	0.0%		
Block 1052	0	0.0%	0	0.0%	0	0.0%	7	5.3%		
Block 1053	0	0.0%	0	0.0%	0	0.0%	16	10.6%		
Block 1054	0	0.0%	0	0.0%	0	0.0%	0	0.0%		
Block 1055	0	0.0%	0	0.0%	0	0.0%	4	6.6%		
Block 1056	0	0.0%	0	0.0%	0	0.0%	1	5.6%		
Block 1057	0	0.0%	3	6.7%	6	13.3%	2	4.4%		
Block 1058	0	0.0%	0	0.0%	0	0.0%	3	23.1%		
Block 1059	4	1.6%	5	2.0%	11	4.5%	14	5.7%		
Block 1060	0	0.0%	0	0.0%	0	0.0%	0	0.0%		
Block 1062	0	0.0%	2	4.0%	1	2.0%	2	4.0%		
Block 2000	0	0.0%	0	0.0%	0	0.0%	0	0.0%		
Block 2001	3	2.3%	0	0.0%	5	3.8%	8	6.1%		
Block 2002	0	0.0%	0	0.0%	0	0.0%	1	11.1%		
Block 2003	0	0.0%	0	0.0%	0	0.0%	0	0.0%		
Block 2004	0	0.0%	0	0.0%	0	0.0%	0	0.0%		
Block 2005	0	0.0%	0	0.0%	0	0.0%	2	66.7%		
Block 2006	0	0.0%	0	0.0%	0	0.0%	13	27.7%		
Block 2007	0	0.0%	0	0.0%	0	0.0%	0	0.0%		
Block 2008	0	0.0%	0	0.0%	0	0.0%	11	7.4%		
Block 2009	0	0.0%	0	0.0%	0	0.0%	10	7.5%		
Block 2010	0	0.0%	0	0.0%	0	0.0%	0	0.0%		
Block 2011	0	0.0%	0	0.0%	0	0.0%	12	12.8%		
Block 2012	3	1.4%	0	0.0%	3	1.4%	125	56.8%		
Block 2013	0	0.0%	0	0.0%	0	0.0%	2	14.3%		
Block 2014	0	0.0%	0	0.0%	0	0.0%	4	3.2%		
Block 2016	0	0.0%	0	0.0%	0	0.0%	6	8.7%		
Block 2017	0	0.0%	0	0.0%	0	0.0%	9	16.7%		
Block 2018	0	0.0%	0	0.0%	0	0.0%	1	11.1%		
Block 2019	0	0.0%	0	0.0%	0	0.0%	8	11.3%		

Bardstown Study Area Census Data

	Total	White Alone	White Alone	Black or African American alone	Black or African American alone	American Indian and Alaska Native alone	American Indian and Alaska Native alone	Asian alone	Asian alone	Native Hawaiian and other Pacific Islander alone	Native Hawaiian and other Pacific Islander alone
Block 2020	106	103	97.2%	3	2.8%	0	0.0%	0	0.0%	0	0.0%
Block 2021	68	65	95.6%	3	4.4%	0	0.0%	0	0.0%	0	0.0%
Block 2022	64	64	100.0%	0	0.0%	0	0.0%	0	0.0%	0	0.0%
Block 2023	30	30	100.0%	0	0.0%	0	0.0%	0	0.0%	0	0.0%
Block 2024	89	89	100.0%	0	0.0%	0	0.0%	0	0.0%	0	0.0%
Block 2026	9	9	100.0%	0	0.0%	0	0.0%	0	0.0%	0	0.0%
Block 2030	11	11	100.0%	0	0.0%	0	0.0%	0	0.0%	0	0.0%
Block 2031	4	4	100.0%	0	0.0%	0	0.0%	0	0.0%	0	0.0%
Block 2032	2	2	100.0%	0	0.0%	0	0.0%	0	0.0%	0	0.0%
Block 2033	30	30	100.0%	0	0.0%	0	0.0%	0	0.0%	0	0.0%
Block 3000	258	258	100.0%	0	0.0%	0	0.0%	0	0.0%	0	0.0%
Block 3001	1	1	100.0%	0	0.0%	0	0.0%	0	0.0%	0	0.0%
Block 3002	242	236	97.5%	5	2.1%	0	0.0%	0	0.0%	0	0.0%
Block 3003	13	13	100.0%	0	0.0%	0	0.0%	0	0.0%	0	0.0%
Block 3005	40	40	100.0%	0	0.0%	0	0.0%	0	0.0%	0	0.0%
Block 3006	9	9	100.0%	0	0.0%	0	0.0%	0	0.0%	0	0.0%
Block 3007	106	105	99.1%	0	0.0%	0	0.0%	1	0.9%	0	0.0%
Block 3009	25	25	100.0%	0	0.0%	0	0.0%	0	0.0%	0	0.0%
Block 3010	80	80	100.0%	0	0.0%	0	0.0%	0	0.0%	0	0.0%
Block 3011	6	6	100.0%	0	0.0%	0	0.0%	0	0.0%	0	0.0%
Block 3012	90	88	97.8%	2	2.2%	0	0.0%	0	0.0%	0	0.0%
Block 3013	62	62	100.0%	0	0.0%	0	0.0%	0	0.0%	0	0.0%
Block 3014	70	66	94.3%	0	0.0%	0	0.0%	0	0.0%	0	0.0%
Block 3015	2	2	100.0%	0	0.0%	0	0.0%	0	0.0%	0	0.0%
Block 3017	23	23	100.0%	0	0.0%	0	0.0%	0	0.0%	0	0.0%
Block 3018	3	3	100.0%	0	0.0%	0	0.0%	0	0.0%	0	0.0%
Block 3019	341	339	99.4%	0	0.0%	0	0.0%	2	0.6%	0	0.0%
Block 3020	2	2	100.0%	0	0.0%	0	0.0%	0	0.0%	0	0.0%
Block 3021	5	5	100.0%	0	0.0%	0	0.0%	0	0.0%	0	0.0%
Block 3022	9	9	100.0%	0	0.0%	0	0.0%	0	0.0%	0	0.0%
Block 3023	95	91	95.8%	2	2.1%	2	2.1%	0	0.0%	0	0.0%
Block 3024	73	71	97.3%	1	1.4%	0	0.0%	0	0.0%	0	0.0%
Block 3025	159	155	97.5%	3	1.9%	0	0.0%	0	0.0%	0	0.0%

Bardstown Study Area Census Data

	Some other race alone	Some other race alone	Two or more races	Two or more races	Hispanic or Latino Origin	Hispanic or Latino Origin	Persons 65 and Over	Persons 65 and Over	Persons Below Poverty Level	Persons Below Poverty Level
Block 2020	0	0.0%	0	0.0%	0	0.0%	8	7.5%		
Block 2021	0	0.0%	0	0.0%	0	0.0%	3	4.4%		
Block 2022	0	0.0%	0	0.0%	2	3.1%	5	7.8%		
Block 2023	0	0.0%	0	0.0%	0	0.0%	2	6.7%		
Block 2024	0	0.0%	0	0.0%	0	0.0%	7	7.9%		
Block 2026	0	0.0%	0	0.0%	0	0.0%	0	0.0%		
Block 2030	0	0.0%	0	0.0%	0	0.0%	1	9.1%		
Block 2031	0	0.0%	0	0.0%	0	0.0%	1	25.0%		
Block 2032	0	0.0%	0	0.0%	0	0.0%	0	0.0%		
Block 2033	0	0.0%	0	0.0%	0	0.0%	6	20.0%		
Block 3000	0	0.0%	0	0.0%	0	0.0%	25	9.7%		
Block 3001	0	0.0%	0	0.0%	0	0.0%	1	100.0%		
Block 3002	0	0.0%	1	0.4%	4	1.7%	13	5.4%		
Block 3003	0	0.0%	0	0.0%	0	0.0%	0	0.0%		
Block 3005	0	0.0%	0	0.0%	0	0.0%	4	10.0%		
Block 3006	0	0.0%	0	0.0%	0	0.0%	1	11.1%		
Block 3007	0	0.0%	0	0.0%	2	1.9%	5	4.7%		
Block 3009	0	0.0%	0	0.0%	0	0.0%	0	0.0%		
Block 3010	0	0.0%	0	0.0%	0	0.0%	5	6.3%		
Block 3011	0	0.0%	0	0.0%	0	0.0%	1	16.7%		
Block 3012	0	0.0%	0	0.0%	2	2.2%	9	10.0%		
Block 3013	0	0.0%	0	0.0%	0	0.0%	6	9.7%		
Block 3014	0	0.0%	4	5.7%	0	0.0%	8	11.4%		
Block 3015	0	0.0%	0	0.0%	0	0.0%	1	50.0%		
Block 3017	0	0.0%	0	0.0%	0	0.0%	6	26.1%		
Block 3018	0	0.0%	0	0.0%	0	0.0%	0	0.0%		
Block 3019	0	0.0%	0	0.0%	2	0.6%	16	4.7%		
Block 3020	0	0.0%	0	0.0%	0	0.0%	2	100.0%		
Block 3021	0	0.0%	0	0.0%	0	0.0%	2	40.0%		
Block 3022	0	0.0%	0	0.0%	0	0.0%	0	0.0%		
Block 3023	0	0.0%	0	0.0%	0	0.0%	9	9.5%		
Block 3024	0	0.0%	1	1.4%	1	1.4%	4	5.5%		
Block 3025	0	0.0%	1	0.6%	2	1.3%	8	5.0%		

Bardstown Study Area Census Data

	Total	White Alone	White Alone	Black or African American alone	Black or African American alone	American Indian and Alaska Native alone	American Indian and Alaska Native alone	Asian alone	Asian alone	Native Hawaiian and other Pacific Islander alone	Native Hawaiian and other Pacific Islander alone
Block 3026	42	42	100.0%	0	0.0%	0	0.0%	0	0.0%	0	0.0%
Block 3027	538	531	98.7%	2	0.4%	1	0.2%	1	0.2%	0	0.0%
Block 3029	146	143	97.9%	0	0.0%	0	0.0%	3	2.1%	0	0.0%
Block 3030	26	26	100.0%	0	0.0%	0	0.0%	0	0.0%	0	0.0%
Block 3031	25	25	100.0%	0	0.0%	0	0.0%	0	0.0%	0	0.0%
Block 3032	158	155	98.1%	0	0.0%	1	0.6%	2	1.3%	0	0.0%
Block 3036	48	48	100.0%	0	0.0%	0	0.0%	0	0.0%	0	0.0%
Block 3037	11	11	100.0%	0	0.0%	0	0.0%	0	0.0%	0	0.0%
Block 3038	47	41	87.2%	0	0.0%	0	0.0%	5	10.6%	1	2.1%
Tract 9903	13252	11515	86.9%	1419	10.7%	18	0.1%	97	0.7%	1	0.0%
Block 1000	8	8	100.0%	0	0.0%	0	0.0%	0	0.0%	0	0.0%
Block 1001	35	35	100.0%	0	0.0%	0	0.0%	0	0.0%	0	0.0%
Block 1002	201	199	99.0%	2	1.0%	0	0.0%	0	0.0%	0	0.0%
Block 1003	116	112	96.6%	2	1.7%	0	0.0%	0	0.0%	0	0.0%
Block 1004	22	22	100.0%	0	0.0%	0	0.0%	0	0.0%	0	0.0%
Block 1005	12	11	91.7%	0	0.0%	0	0.0%	0	0.0%	0	0.0%
Block 1006	97	95	97.9%	0	0.0%	2	2.1%	0	0.0%	0	0.0%
Block 1007	341	332	97.4%	9	2.6%	0	0.0%	0	0.0%	0	0.0%
Block 1008	14	14	100.0%	0	0.0%	0	0.0%	0	0.0%	0	0.0%
Block 1009	10	10	100.0%	0	0.0%	0	0.0%	0	0.0%	0	0.0%
Block 1010	305	260	85.2%	36	11.8%	1	0.3%	4	1.3%	0	0.0%
Block 1011	2	2	100.0%	0	0.0%	0	0.0%	0	0.0%	0	0.0%
Block 1012	147	108	73.5%	38	25.9%	0	0.0%	0	0.0%	0	0.0%
Block 1013	509	440	86.4%	58	11.4%	0	0.0%	2	0.4%	0	0.0%
Block 1015	10	8	80.0%	0	0.0%	0	0.0%	0	0.0%	0	0.0%
Block 1018	48	45	93.8%	2	4.2%	0	0.0%	1	2.1%	0	0.0%
Block 1020	7	7	100.0%	0	0.0%	0	0.0%	0	0.0%	0	0.0%
Block 1021	39	35	89.7%	4	10.3%	0	0.0%	0	0.0%	0	0.0%
Block 1025	59	58	98.3%	0	0.0%	0	0.0%	0	0.0%	0	0.0%
Block 1026	19	19	100.0%	0	0.0%	0	0.0%	0	0.0%	0	0.0%
Block 1027	6	6	100.0%	0	0.0%	0	0.0%	0	0.0%	0	0.0%
Block 1028	14	14	100.0%	0	0.0%	0	0.0%	0	0.0%	0	0.0%

Bardstown Study Area Census Data

	Some other race alone	Some other race alone	Two or more races	Two or more races	Hispanic or Latino Origin	Hispanic or Latino Origin	Persons 65 and Over	Persons 65 and Over	Persons Below Poverty Level	Persons Below Poverty Level
Block 3026	0	0.0%	0	0.0%	0	0.0%	10	23.8%		
Block 3027	0	0.0%	3	0.6%	3	0.6%	32	5.9%		
Block 3029	0	0.0%	0	0.0%	0	0.0%	5	3.4%		
Block 3030	0	0.0%	0	0.0%	0	0.0%	4	15.4%		
Block 3031	0	0.0%	0	0.0%	0	0.0%	3	12.0%		
Block 3032	0	0.0%	0	0.0%	0	0.0%	142	89.9%		
Block 3036	0	0.0%	0	0.0%	0	0.0%	4	8.3%		
Block 3037	0	0.0%	0	0.0%	0	0.0%	1	9.1%		
Block 3038	0	0.0%	0	0.0%	0	0.0%	2	4.3%		
Tract 9903	67	0.5%	135	1.0%	180	1.4%	1211	9.1%	1828	13.8%
Block 1000	0	0.0%	0	0.0%	0	0.0%	4	50.0%		
Block 1001	0	0.0%	0	0.0%	0	0.0%	2	5.7%		
Block 1002	0	0.0%	0	0.0%	0	0.0%	11	5.5%		
Block 1003	0	0.0%	2	1.7%	0	0.0%	6	5.2%		
Block 1004	0	0.0%	0	0.0%	0	0.0%	1	4.5%		
Block 1005	0	0.0%	1	8.3%	0	0.0%	0	0.0%		
Block 1006	0	0.0%	0	0.0%	4	4.1%	4	4.1%		
Block 1007	0	0.0%	0	0.0%	5	1.5%	18	5.3%		
Block 1008	0	0.0%	0	0.0%	0	0.0%	0	0.0%		
Block 1009	0	0.0%	0	0.0%	0	0.0%	0	0.0%		
Block 1010	2	0.7%	2	0.7%	4	1.3%	9	3.0%		
Block 1011	0	0.0%	0	0.0%	0	0.0%	1	50.0%		
Block 1012	1	0.7%	0	0.0%	2	1.4%	8	5.4%		
Block 1013	1	0.2%	8	1.6%	9	1.8%	20	3.9%		
Block 1015	0	0.0%	2	20.0%	0	0.0%	1	10.0%		
Block 1018	0	0.0%	0	0.0%	0	0.0%	0	0.0%		
Block 1020	0	0.0%	0	0.0%	1	14.3%	0	0.0%		
Block 1021	0	0.0%	0	0.0%	1	2.6%	12	30.8%		
Block 1025	1	1.7%	0	0.0%	1	1.7%	4	6.8%		
Block 1026	0	0.0%	0	0.0%	0	0.0%	5	26.3%		
Block 1027	0	0.0%	0	0.0%	0	0.0%	0	0.0%		
Block 1028	0	0.0%	0	0.0%	0	0.0%	0	0.0%		

Bardstown Study Area Census Data

	Total	White Alone	White Alone	Black or African American alone	Black or African American alone	American Indian and Alaska Native alone	American Indian and Alaska Native alone	Asian alone	Asian alone	Native Hawaiian and other Pacific Islander alone	Native Hawaiian and other Pacific Islander alone
Block 1030	12	12	100.0%	0	0.0%	0	0.0%	0	0.0%	0	0.0%
Block 1031	42	42	100.0%	0	0.0%	0	0.0%	0	0.0%	0	0.0%
Block 1033	67	63	94.0%	4	6.0%	0	0.0%	0	0.0%	0	0.0%
Block 1034	1	1	100.0%	0	0.0%	0	0.0%	0	0.0%	0	0.0%
Block 1037	545	470	86.2%	62	11.4%	2	0.4%	3	0.6%	0	0.0%
Block 1039	40	39	97.5%	0	0.0%	0	0.0%	1	2.5%	0	0.0%
Block 1041	171	127	74.3%	34	19.9%	0	0.0%	4	2.3%	0	0.0%
Block 1042	231	176	76.2%	46	19.9%	0	0.0%	3	1.3%	0	0.0%
Block 1043	588	504	85.7%	76	12.9%	0	0.0%	0	0.0%	0	0.0%
Block 1044	38	34	89.5%	1	2.6%	0	0.0%	3	7.9%	0	0.0%
Block 1045	23	20	87.0%	1	4.3%	1	4.3%	0	0.0%	0	0.0%
Block 1046	19	19	100.0%	0	0.0%	0	0.0%	0	0.0%	0	0.0%
Block 1047	21	11	52.4%	10	47.6%	0	0.0%	0	0.0%	0	0.0%
Block 1048	38	23	60.5%	15	39.5%	0	0.0%	0	0.0%	0	0.0%
Block 1049	208	149	71.6%	56	26.9%	0	0.0%	1	0.5%	0	0.0%
Block 1050	37	26	70.3%	11	29.7%	0	0.0%	0	0.0%	0	0.0%
Block 1051	47	20	42.6%	27	57.4%	0	0.0%	0	0.0%	0	0.0%
Block 1052	48	38	79.2%	10	20.8%	0	0.0%	0	0.0%	0	0.0%
Block 1053	32	25	78.1%	7	21.9%	0	0.0%	0	0.0%	0	0.0%
Block 1054	29	18	62.1%	11	37.9%	0	0.0%	0	0.0%	0	0.0%
Block 1055	31	25	80.6%	5	16.1%	0	0.0%	0	0.0%	0	0.0%
Block 1056	63	47	74.6%	14	22.2%	0	0.0%	0	0.0%	0	0.0%
Block 1057	47	44	93.6%	2	4.3%	1	2.1%	0	0.0%	0	0.0%
Block 1059	6	6	100.0%	0	0.0%	0	0.0%	0	0.0%	0	0.0%
Block 1060	121	121	100.0%	0	0.0%	0	0.0%	0	0.0%	0	0.0%
Block 1063	6	6	100.0%	0	0.0%	0	0.0%	0	0.0%	0	0.0%
Block 1064	57	57	100.0%	0	0.0%	0	0.0%	0	0.0%	0	0.0%
Block 1065	8	8	100.0%	0	0.0%	0	0.0%	0	0.0%	0	0.0%
Block 1067	4	4	100.0%	0	0.0%	0	0.0%	0	0.0%	0	0.0%
Block 2000	41	40	97.6%	1	2.4%	0	0.0%	0	0.0%	0	0.0%
Block 2001	149	143	96.0%	4	2.7%	0	0.0%	1	0.7%	0	0.0%
Block 2002	23	19	82.6%	4	17.4%	0	0.0%	0	0.0%	0	0.0%
Block 2003	27	21	77.8%	6	22.2%	0	0.0%	0	0.0%	0	0.0%

Bardstown Study Area Census Data

	Some other race alone	Some other race alone	Two or more races	Two or more races	Hispanic or Latino Origin	Hispanic or Latino Origin	Persons 65 and Over	Persons 65 and Over	Persons Below Poverty Level	Persons Below Poverty Level
Block 1030	0	0.0%	0	0.0%	0	0.0%	0	0.0%		
Block 1031	0	0.0%	0	0.0%	0	0.0%	5	11.9%		
Block 1033	0	0.0%	0	0.0%	0	0.0%	11	16.4%		
Block 1034	0	0.0%	0	0.0%	0	0.0%	1	100.0%		
Block 1037	4	0.7%	4	0.7%	5	0.9%	22	4.0%		
Block 1039	0	0.0%	0	0.0%	0	0.0%	0	0.0%		
Block 1041	1	0.6%	5	2.9%	4	2.3%	4	2.3%		
Block 1042	6	2.6%	0	0.0%	6	2.6%	5	2.2%		
Block 1043	0	0.0%	8	1.4%	5	0.9%	47	8.0%		
Block 1044	0	0.0%	0	0.0%	0	0.0%	6	15.8%		
Block 1045	0	0.0%	1	4.3%	0	0.0%	2	8.7%		
Block 1046	0	0.0%	0	0.0%	0	0.0%	4	21.1%		
Block 1047	0	0.0%	0	0.0%	0	0.0%	2	9.5%		
Block 1048	0	0.0%	0	0.0%	0	0.0%	2	5.3%		
Block 1049	0	0.0%	2	1.0%	0	0.0%	10	4.8%		
Block 1050	0	0.0%	0	0.0%	0	0.0%	2	5.4%		
Block 1051	0	0.0%	0	0.0%	2	4.3%	0	0.0%		
Block 1052	0	0.0%	0	0.0%	0	0.0%	2	4.2%		
Block 1053	0	0.0%	0	0.0%	0	0.0%	1	3.1%		
Block 1054	0	0.0%	0	0.0%	0	0.0%	2	6.9%		
Block 1055	0	0.0%	1	3.2%	0	0.0%	2	6.5%		
Block 1056	0	0.0%	2	3.2%	0	0.0%	2	3.2%		
Block 1057	0	0.0%	0	0.0%	1	2.1%	2	4.3%		
Block 1059	0	0.0%	0	0.0%	0	0.0%	0	0.0%		
Block 1060	0	0.0%	0	0.0%	0	0.0%	12	9.9%		
Block 1063	0	0.0%	0	0.0%	0	0.0%	1	16.7%		
Block 1064	0	0.0%	0	0.0%	0	0.0%	1	1.8%		
Block 1065	0	0.0%	0	0.0%	0	0.0%	0	0.0%		
Block 1067	0	0.0%	0	0.0%	0	0.0%	0	0.0%		
Block 2000	0	0.0%	0	0.0%	0	0.0%	5	12.2%		
Block 2001	0	0.0%	1	0.7%	0	0.0%	14	9.4%		
Block 2002	0	0.0%	0	0.0%	0	0.0%	4	17.4%		
Block 2003	0	0.0%	0	0.0%	3	11.1%	0	0.0%		

Bardstown Study Area Census Data

	Total	White Alone	White Alone	Black or African American alone	Black or African American alone	American Indian and Alaska Native alone	American Indian and Alaska Native alone	Asian alone	Asian alone	Native Hawaiian and other Pacific Islander alone	Native Hawaiian and other Pacific Islander alone
Block 2004	4	4	100.0%	0	0.0%	0	0.0%	0	0.0%	0	0.0%
Block 2015	130	124	95.4%	0	0.0%	0	0.0%	4	3.1%	0	0.0%
Block 2016	188	188	100.0%	0	0.0%	0	0.0%	0	0.0%	0	0.0%
Block 2018	93	93	100.0%	0	0.0%	0	0.0%	0	0.0%	0	0.0%
Block 2019	446	437	98.0%	2	0.4%	0	0.0%	7	1.6%	0	0.0%
Block 2020	438	436	99.5%	2	0.5%	0	0.0%	0	0.0%	0	0.0%
Block 2022	58	57	98.3%	1	1.7%	0	0.0%	0	0.0%	0	0.0%
Block 2023	27	27	100.0%	0	0.0%	0	0.0%	0	0.0%	0	0.0%
Block 2024	76	76	100.0%	0	0.0%	0	0.0%	0	0.0%	0	0.0%
Block 2029	6	4	66.7%	2	33.3%	0	0.0%	0	0.0%	0	0.0%
Block 2030	181	167	92.3%	9	5.0%	0	0.0%	5	2.8%	0	0.0%
Block 2031	59	55	93.2%	4	6.8%	0	0.0%	0	0.0%	0	0.0%
Block 2032	2	2	100.0%	0	0.0%	0	0.0%	0	0.0%	0	0.0%
Block 2040	20	4	20.0%	16	80.0%	0	0.0%	0	0.0%	0	0.0%
Block 2044	61	61	100.0%	0	0.0%	0	0.0%	0	0.0%	0	0.0%
Block 2045	15	15	100.0%	0	0.0%	0	0.0%	0	0.0%	0	0.0%
Block 2046	39	39	100.0%	0	0.0%	0	0.0%	0	0.0%	0	0.0%
Block 2047	7	7	100.0%	0	0.0%	0	0.0%	0	0.0%	0	0.0%
Block 2048	40	40	100.0%	0	0.0%	0	0.0%	0	0.0%	0	0.0%
Block 3000	27	27	100.0%	0	0.0%	0	0.0%	0	0.0%	0	0.0%
Block 3001	427	413	96.7%	9	2.1%	0	0.0%	5	1.2%	0	0.0%
Block 3003	17	17	100.0%	0	0.0%	0	0.0%	0	0.0%	0	0.0%
Block 3004	18	17	94.4%	1	5.6%	0	0.0%	0	0.0%	0	0.0%
Block 3005	30	29	96.7%	0	0.0%	0	0.0%	0	0.0%	0	0.0%
Block 3006	46	46	100.0%	0	0.0%	0	0.0%	0	0.0%	0	0.0%
Block 3007	23	23	100.0%	0	0.0%	0	0.0%	0	0.0%	0	0.0%
Block 3008	7	7	100.0%	0	0.0%	0	0.0%	0	0.0%	0	0.0%
Block 3009	176	174	98.9%	0	0.0%	0	0.0%	2	1.1%	0	0.0%
Block 3012	71	63	88.7%	7	9.9%	0	0.0%	0	0.0%	0	0.0%
Block 3013	5	5	100.0%	0	0.0%	0	0.0%	0	0.0%	0	0.0%
Block 3014	40	34	85.0%	1	2.5%	2	5.0%	0	0.0%	0	0.0%
Block 3015	64	53	82.8%	1	1.6%	0	0.0%	0	0.0%	0	0.0%
Block 3016	4	4	100.0%	0	0.0%	0	0.0%	0	0.0%	0	0.0%

Bardstown Study Area Census Data

	Some other race alone	Some other race alone	Two or more races	Two or more races	Hispanic or Latino Origin	Hispanic or Latino Origin	Persons 65 and Over	Persons 65 and Over	Persons Below Poverty Level	Persons Below Poverty Level
Block 2004	0	0.0%	0	0.0%	0	0.0%	1	25.0%		
Block 2015	0	0.0%	2	1.5%	0	0.0%	13	10.0%		
Block 2016	0	0.0%	0	0.0%	3	1.6%	11	5.9%		
Block 2018	0	0.0%	0	0.0%	0	0.0%	11	11.8%		
Block 2019	0	0.0%	0	0.0%	3	0.7%	13	2.9%		
Block 2020	0	0.0%	0	0.0%	0	0.0%	30	6.8%		
Block 2022	0	0.0%	0	0.0%	0	0.0%	6	10.3%		
Block 2023	0	0.0%	0	0.0%	0	0.0%	0	0.0%		
Block 2024	0	0.0%	0	0.0%	0	0.0%	4	5.3%		
Block 2029	0	0.0%	0	0.0%	0	0.0%	1	16.7%		
Block 2030	0	0.0%	0	0.0%	0	0.0%	26	14.4%		
Block 2031	0	0.0%	0	0.0%	0	0.0%	8	13.6%		
Block 2032	0	0.0%	0	0.0%	0	0.0%	0	0.0%		
Block 2040	0	0.0%	0	0.0%	0	0.0%	3	15.0%		
Block 2044	0	0.0%	0	0.0%	5	8.2%	6	9.8%		
Block 2045	0	0.0%	0	0.0%	0	0.0%	2	13.3%		
Block 2046	0	0.0%	0	0.0%	2	5.1%	9	23.1%		
Block 2047	0	0.0%	0	0.0%	0	0.0%	0	0.0%		
Block 2048	0	0.0%	0	0.0%	0	0.0%	5	12.5%		
Block 3000	0	0.0%	0	0.0%	0	0.0%	7	25.9%		
Block 3001	0	0.0%	0	0.0%	0	0.0%	33	7.7%		
Block 3003	0	0.0%	0	0.0%	0	0.0%	1	5.9%		
Block 3004	0	0.0%	0	0.0%	0	0.0%	1	5.6%		
Block 3005	0	0.0%	1	3.3%	0	0.0%	0	0.0%		
Block 3006	0	0.0%	0	0.0%	0	0.0%	4	8.7%		
Block 3007	0	0.0%	0	0.0%	0	0.0%	0	0.0%		
Block 3008	0	0.0%	0	0.0%	0	0.0%	0	0.0%		
Block 3009	0	0.0%	0	0.0%	4	2.3%	8	4.5%		
Block 3012	1	1.4%	0	0.0%	1	1.4%	3	4.2%		
Block 3013	0	0.0%	0	0.0%	0	0.0%	0	0.0%		
Block 3014	0	0.0%	3	7.5%	3	7.5%	9	22.5%		
Block 3015	1	1.6%	9	14.1%	2	3.1%	5	7.8%		
Block 3016	0	0.0%	0	0.0%	0	0.0%	0	0.0%		

Bardstown Study Area Census Data

	Total	White Alone	White Alone	Black or African American alone	Black or African American alone	American Indian and Alaska Native alone	American Indian and Alaska Native alone	Asian alone	Asian alone	Native Hawaiian and other Pacific Islander alone	Native Hawaiian and other Pacific Islander alone
Block 3018	136	121	89.0%	12	8.8%	0	0.0%	0	0.0%	0	0.0%
Block 3019	66	58	87.9%	3	4.5%	2	3.0%	3	4.5%	0	0.0%
Block 3020	52	33	63.5%	19	36.5%	0	0.0%	0	0.0%	0	0.0%
Block 3021	13	5	38.5%	8	61.5%	0	0.0%	0	0.0%	0	0.0%
Block 3022	23	18	78.3%	3	13.0%	0	0.0%	0	0.0%	0	0.0%
Block 3023	161	137	85.1%	17	10.6%	0	0.0%	0	0.0%	0	0.0%
Block 3024	32	32	100.0%	0	0.0%	0	0.0%	0	0.0%	0	0.0%
Block 3025	18	14	77.8%	0	0.0%	0	0.0%	4	22.2%	0	0.0%
Block 3026	13	12	92.3%	0	0.0%	0	0.0%	1	7.7%	0	0.0%
Block 3027	17	16	94.1%	0	0.0%	0	0.0%	0	0.0%	0	0.0%
Block 3028	1	1	100.0%	0	0.0%	0	0.0%	0	0.0%	0	0.0%
Block 3030	131	124	94.7%	2	1.5%	0	0.0%	0	0.0%	0	0.0%
Block 3031	19	19	100.0%	0	0.0%	0	0.0%	0	0.0%	0	0.0%
Block 4000	54	35	64.8%	18	33.3%	1	1.9%	0	0.0%	0	0.0%
Block 4001	134	124	92.5%	1	0.7%	1	0.7%	6	4.5%	0	0.0%
Block 4002	1	1	100.0%	0	0.0%	0	0.0%	0	0.0%	0	0.0%
Block 4003	5	5	100.0%	0	0.0%	0	0.0%	0	0.0%	0	0.0%
Block 4007	13	11	84.6%	0	0.0%	0	0.0%	0	0.0%	0	0.0%
Block 4008	25	25	100.0%	0	0.0%	0	0.0%	0	0.0%	0	0.0%
Block 4009	23	22	95.7%	1	4.3%	0	0.0%	0	0.0%	0	0.0%
Block 4010	40	40	100.0%	0	0.0%	0	0.0%	0	0.0%	0	0.0%
Block 4011	30	28	93.3%	1	3.3%	0	0.0%	0	0.0%	0	0.0%
Block 4012	34	34	100.0%	0	0.0%	0	0.0%	0	0.0%	0	0.0%
Block 4013	54	54	100.0%	0	0.0%	0	0.0%	0	0.0%	0	0.0%
Block 4014	65	65	100.0%	0	0.0%	0	0.0%	0	0.0%	0	0.0%
Block 4015	1	1	100.0%	0	0.0%	0	0.0%	0	0.0%	0	0.0%
Block 4017	28	27	96.4%	1	3.6%	0	0.0%	0	0.0%	0	0.0%
Block 4018	137	117	85.4%	2	1.5%	1	0.7%	0	0.0%	0	0.0%
Block 4019	3	3	100.0%	0	0.0%	0	0.0%	0	0.0%	0	0.0%
Block 4020	40	39	97.5%	1	2.5%	0	0.0%	0	0.0%	0	0.0%
Block 4021	39	26	66.7%	12	30.8%	0	0.0%	0	0.0%	0	0.0%
Block 4022	41	41	100.0%	0	0.0%	0	0.0%	0	0.0%	0	0.0%
Block 4023	12	12	100.0%	0	0.0%	0	0.0%	0	0.0%	0	0.0%

Bardstown Study Area Census Data

	Some other race alone	Some other race alone	Two or more races	Two or more races	Hispanic or Latino Origin	Hispanic or Latino Origin	Persons 65 and Over	Persons 65 and Over	Persons Below Poverty Level	Persons Below Poverty Level
Block 3018	0	0.0%	3	2.2%	10	7.4%	0	0.0%		
Block 3019	0	0.0%	0	0.0%	0	0.0%	18	27.3%		
Block 3020	0	0.0%	0	0.0%	0	0.0%	2	3.8%		
Block 3021	0	0.0%	0	0.0%	0	0.0%	5	38.5%		
Block 3022	2	8.7%	0	0.0%	2	8.7%	12	52.2%		
Block 3023	6	3.7%	1	0.6%	5	3.1%	2	1.2%		
Block 3024	0	0.0%	0	0.0%	0	0.0%	5	15.6%		
Block 3025	0	0.0%	0	0.0%	0	0.0%	4	22.2%		
Block 3026	0	0.0%	0	0.0%	0	0.0%	4	30.8%		
Block 3027	0	0.0%	1	5.9%	0	0.0%	1	5.9%		
Block 3028	0	0.0%	0	0.0%	0	0.0%	1	100.0%		
Block 3030	0	0.0%	5	3.8%	3	2.3%	10	7.6%		
Block 3031	0	0.0%	0	0.0%	0	0.0%	0	0.0%		
Block 4000	0	0.0%	0	0.0%	0	0.0%	7	13.0%		
Block 4001	0	0.0%	2	1.5%	4	3.0%	18	13.4%		
Block 4002	0	0.0%	0	0.0%	0	0.0%	1	100.0%		
Block 4003	0	0.0%	0	0.0%	0	0.0%	2	40.0%		
Block 4007	0	0.0%	2	15.4%	0	0.0%	4	30.8%		
Block 4008	0	0.0%	0	0.0%	0	0.0%	6	24.0%		
Block 4009	0	0.0%	0	0.0%	0	0.0%	8	34.8%		
Block 4010	0	0.0%	0	0.0%	3	7.5%	11	27.5%		
Block 4011	1	3.3%	0	0.0%	1	3.3%	6	20.0%		
Block 4012	0	0.0%	0	0.0%	0	0.0%	3	8.8%		
Block 4013	0	0.0%	0	0.0%	0	0.0%	16	29.6%		
Block 4014	0	0.0%	0	0.0%	0	0.0%	12	18.5%		
Block 4015	0	0.0%	0	0.0%	0	0.0%	1	100.0%		
Block 4017	0	0.0%	0	0.0%	0	0.0%	2	7.1%		
Block 4018	14	10.2%	3	2.2%	17	12.4%	12	8.8%		
Block 4019	0	0.0%	0	0.0%	0	0.0%	2	66.7%		
Block 4020	0	0.0%	0	0.0%	0	0.0%	5	12.5%		
Block 4021	0	0.0%	1	2.6%	0	0.0%	10	25.6%		
Block 4022	0	0.0%	0	0.0%	0	0.0%	17	41.5%		
Block 4023	0	0.0%	0	0.0%	0	0.0%	6	50.0%		

Bardstown Study Area Census Data

	Total	White Alone	White Alone	Black or African American alone	Black or African American alone	American Indian and Alaska Native alone	American Indian and Alaska Native alone	Asian alone	Asian alone	Native Hawaiian and other Pacific Islander alone	Native Hawaiian and other Pacific Islander alone
Block 4024	78	52	66.7%	26	33.3%	0	0.0%	0	0.0%	0	0.0%
Block 4025	50	48	96.0%	2	4.0%	0	0.0%	0	0.0%	0	0.0%
Block 4026	57	43	75.4%	7	12.3%	0	0.0%	3	5.3%	0	0.0%
Block 4027	27	27	100.0%	0	0.0%	0	0.0%	0	0.0%	0	0.0%
Block 4029	50	50	100.0%	0	0.0%	0	0.0%	0	0.0%	0	0.0%
Block 5000	40	30	75.0%	8	20.0%	0	0.0%	1	2.5%	0	0.0%
Block 5001	148	123	83.1%	18	12.2%	2	1.4%	1	0.7%	0	0.0%
Block 5002	40	40	100.0%	0	0.0%	0	0.0%	0	0.0%	0	0.0%
Block 5003	37	37	100.0%	0	0.0%	0	0.0%	0	0.0%	0	0.0%
Block 5004	28	28	100.0%	0	0.0%	0	0.0%	0	0.0%	0	0.0%
Block 5005	26	23	88.5%	2	7.7%	0	0.0%	0	0.0%	1	3.8%
Block 5006	36	36	100.0%	0	0.0%	0	0.0%	0	0.0%	0	0.0%
Block 5007	37	22	59.5%	9	24.3%	0	0.0%	0	0.0%	0	0.0%
Block 5008	66	60	90.9%	3	4.5%	0	0.0%	0	0.0%	0	0.0%
Block 5009	39	31	79.5%	8	20.5%	0	0.0%	0	0.0%	0	0.0%
Block 5010	80	43	53.8%	26	32.5%	0	0.0%	2	2.5%	0	0.0%
Block 5011	143	131	91.6%	7	4.9%	0	0.0%	0	0.0%	0	0.0%
Block 5012	43	29	67.4%	10	23.3%	0	0.0%	0	0.0%	0	0.0%
Block 5013	8	8	100.0%	0	0.0%	0	0.0%	0	0.0%	0	0.0%
Block 5014	29	24	82.8%	1	3.4%	0	0.0%	0	0.0%	0	0.0%
Block 5015	27	27	100.0%	0	0.0%	0	0.0%	0	0.0%	0	0.0%
Block 5016	31	28	90.3%	3	9.7%	0	0.0%	0	0.0%	0	0.0%
Block 5017	9	3	33.3%	6	66.7%	0	0.0%	0	0.0%	0	0.0%
Block 5018	29	27	93.1%	2	6.9%	0	0.0%	0	0.0%	0	0.0%
Block 5019	11	11	100.0%	0	0.0%	0	0.0%	0	0.0%	0	0.0%
Block 5020	42	36	85.7%	5	11.9%	0	0.0%	0	0.0%	0	0.0%
Block 5023	29	29	100.0%	0	0.0%	0	0.0%	0	0.0%	0	0.0%
Block 5025	11	10	90.9%	0	0.0%	0	0.0%	0	0.0%	0	0.0%
Block 6000	6	6	100.0%	0	0.0%	0	0.0%	0	0.0%	0	0.0%
Block 6002	1	1	100.0%	0	0.0%	0	0.0%	0	0.0%	0	0.0%
Block 6003	5	5	100.0%	0	0.0%	0	0.0%	0	0.0%	0	0.0%
Block 6004	25	25	100.0%	0	0.0%	0	0.0%	0	0.0%	0	0.0%
Block 6005	14	7	50.0%	0	0.0%	0	0.0%	7	50.0%	0	0.0%

Bardstown Study Area Census Data

	Some other race alone	Some other race alone	Two or more races	Two or more races	Hispanic or Latino Origin	Hispanic or Latino Origin	Persons 65 and Over	Persons 65 and Over	Persons Below Poverty Level	Persons Below Poverty Level
Block 4024	0	0.0%	0	0.0%	0	0.0%	19	24.4%		
Block 4025	0	0.0%	0	0.0%	0	0.0%	16	32.0%		
Block 4026	3	5.3%	1	1.8%	0	0.0%	8	14.0%		
Block 4027	0	0.0%	0	0.0%	0	0.0%	1	3.7%		
Block 4029	0	0.0%	0	0.0%	0	0.0%	13	26.0%		
Block 5000	0	0.0%	1	2.5%	0	0.0%	9	22.5%		
Block 5001	0	0.0%	4	2.7%	0	0.0%	21	14.2%		
Block 5002	0	0.0%	0	0.0%	0	0.0%	6	15.0%		
Block 5003	0	0.0%	0	0.0%	0	0.0%	10	27.0%		
Block 5004	0	0.0%	0	0.0%	0	0.0%	3	10.7%		
Block 5005	0	0.0%	0	0.0%	0	0.0%	3	11.5%		
Block 5006	0	0.0%	0	0.0%	0	0.0%	2	5.6%		
Block 5007	0	0.0%	6	16.2%	5	13.5%	8	21.6%		
Block 5008	1	1.5%	2	3.0%	1	1.5%	14	21.2%		
Block 5009	0	0.0%	0	0.0%	0	0.0%	7	17.9%		
Block 5010	9	11.3%	0	0.0%	9	11.3%	0	0.0%		
Block 5011	0	0.0%	5	3.5%	1	0.7%	12	8.4%		
Block 5012	0	0.0%	4	9.3%	0	0.0%	8	18.6%		
Block 5013	0	0.0%	0	0.0%	0	0.0%	1	12.5%		
Block 5014	0	0.0%	4	13.8%	0	0.0%	7	24.1%		
Block 5015	0	0.0%	0	0.0%	0	0.0%	8	29.6%		
Block 5016	0	0.0%	0	0.0%	0	0.0%	7	22.6%		
Block 5017	0	0.0%	0	0.0%	0	0.0%	2	22.2%		
Block 5018	0	0.0%	0	0.0%	0	0.0%	7	24.1%		
Block 5019	0	0.0%	0	0.0%	0	0.0%	2	18.2%		
Block 5020	0	0.0%	1	2.4%	1	2.4%	8	19.0%		
Block 5023	0	0.0%	0	0.0%	0	0.0%	8	27.6%		
Block 5025	0	0.0%	1	9.1%	0	0.0%	1	9.1%		
Block 6000	0	0.0%	0	0.0%	0	0.0%	1	16.7%		
Block 6002	0	0.0%	0	0.0%	0	0.0%	0	0.0%		
Block 6003	0	0.0%	0	0.0%	0	0.0%	2	40.0%		
Block 6004	0	0.0%	0	0.0%	0	0.0%	4	16.0%		
Block 6005	0	0.0%	0	0.0%	0	0.0%	3	21.4%		

Bardstown Study Area Census Data

	Total	White Alone	White Alone	Black or African American alone	Black or African American alone	American Indian and Alaska Native alone	American Indian and Alaska Native alone	Asian alone	Asian alone	Native Hawaiian and other Pacific Islander alone	Native Hawaiian and other Pacific Islander alone
Block 6006	23	23	100.0%	0	0.0%	0	0.0%	0	0.0%	0	0.0%
Block 6007	5	5	100.0%	0	0.0%	0	0.0%	0	0.0%	0	0.0%
Block 6008	85	84	98.8%	0	0.0%	0	0.0%	0	0.0%	0	0.0%
Block 6009	118	106	89.8%	0	0.0%	0	0.0%	12	10.2%	0	0.0%
Block 6010	107	67	62.6%	36	33.6%	0	0.0%	0	0.0%	0	0.0%
Block 6011	50	41	82.0%	9	18.0%	0	0.0%	0	0.0%	0	0.0%
Block 6012	21	21	100.0%	0	0.0%	0	0.0%	0	0.0%	0	0.0%
Block 6015	17	17	100.0%	0	0.0%	0	0.0%	0	0.0%	0	0.0%
Block 6017	245	202	82.4%	37	15.1%	0	0.0%	1	0.4%	0	0.0%
Block 6020	115	108	93.9%	5	4.3%	0	0.0%	0	0.0%	0	0.0%
Block 6028	6	6	100.0%	0	0.0%	0	0.0%	0	0.0%	0	0.0%
Block 6031	2	0	0.0%	2	100.0%	0	0.0%	0	0.0%	0	0.0%
Block 6032	17	17	100.0%	0	0.0%	0	0.0%	0	0.0%	0	0.0%
Block 6039	433	367	84.8%	47	10.9%	1	0.2%	9	2.1%	0	0.0%
Block 6040	460	321	69.8%	128	27.8%	1	0.2%	1	0.2%	0	0.0%
Block 6041	119	74	62.2%	38	31.9%	0	0.0%	0	0.0%	0	0.0%
Block 6042	106	61	57.5%	45	42.5%	0	0.0%	0	0.0%	0	0.0%
Block 6043	133	67	50.4%	66	49.6%	0	0.0%	0	0.0%	0	0.0%
Block 6044	32	24	75.0%	8	25.0%	0	0.0%	0	0.0%	0	0.0%
Block 6045	90	82	91.1%	8	8.9%	0	0.0%	0	0.0%	0	0.0%
Block 6046	57	57	100.0%	0	0.0%	0	0.0%	0	0.0%	0	0.0%
Block 6047	41	41	100.0%	0	0.0%	0	0.0%	0	0.0%	0	0.0%
Block 6048	19	19	100.0%	0	0.0%	0	0.0%	0	0.0%	0	0.0%
Block 6049	16	16	100.0%	0	0.0%	0	0.0%	0	0.0%	0	0.0%
Block 6051	70	35	50.0%	31	44.3%	0	0.0%	0	0.0%	0	0.0%
Block 6052	410	302	73.7%	102	24.9%	0	0.0%	0	0.0%	0	0.0%
Block 6059	1	1	100.0%	0	0.0%	0	0.0%	0	0.0%	0	0.0%
Block 6060	5	5	100.0%	0	0.0%	0	0.0%	0	0.0%	0	0.0%
Tract 9904	3,061	2,640	86.2%	342	11.2%	2	0.1%	49	1.6%	0	0.0%
Block 1000	160	160	100.0%	0	0.0%	0	0.0%	0	0.0%	0	0.0%
Block 1001	7	7	100.0%	0	0.0%	0	0.0%	0	0.0%	0	0.0%
Block 1002	3	3	100.0%	0	0.0%	0	0.0%	0	0.0%	0	0.0%

Bardstown Study Area Census Data

	Some other race alone	Some other race alone	Two or more races	Two or more races	Hispanic or Latino Origin	Hispanic or Latino Origin	Persons 65 and Over	Persons 65 and Over	Persons Below Poverty Level	Persons Below Poverty Level
Block 6006	0	0.0%	0	0.0%	0	0.0%	2	8.7%		
Block 6007	0	0.0%	0	0.0%	0	0.0%	0	0.0%		
Block 6008	0	0.0%	1	1.2%	0	0.0%	3	3.5%		
Block 6009	0	0.0%	0	0.0%	0	0.0%	8	6.8%		
Block 6010	0	0.0%	4	3.7%	0	0.0%	2	1.9%		
Block 6011	0	0.0%	0	0.0%	0	0.0%	3	6.0%		
Block 6012	0	0.0%	0	0.0%	0	0.0%	2	9.5%		
Block 6015	0	0.0%	0	0.0%	0	0.0%	2	11.8%		
Block 6017	1	0.4%	4	1.6%	3	1.2%	88	35.9%		
Block 6020	0	0.0%	2	1.7%	1	0.9%	28	24.3%		
Block 6028	0	0.0%	0	0.0%	0	0.0%	1	16.7%		
Block 6031	0	0.0%	0	0.0%	0	0.0%	2	100.0%		
Block 6032	0	0.0%	0	0.0%	0	0.0%	0	0.0%		
Block 6039	3	0.7%	6	1.4%	7	1.6%	13	3.0%		
Block 6040	8	1.7%	1	0.2%	13	2.8%	47	10.2%		
Block 6041	0	0.0%	7	5.9%	0	0.0%	10	8.4%		
Block 6042	0	0.0%	0	0.0%	8	7.5%	2	1.9%		
Block 6043	0	0.0%	0	0.0%	0	0.0%	1	0.8%		
Block 6044	0	0.0%	0	0.0%	0	0.0%	3	9.4%		
Block 6045	0	0.0%	0	0.0%	0	0.0%	18	20.0%		
Block 6046	0	0.0%	0	0.0%	0	0.0%	14	24.6%		
Block 6047	0	0.0%	0	0.0%	0	0.0%	12	29.3%		
Block 6048	0	0.0%	0	0.0%	0	0.0%	2	10.5%		
Block 6049	0	0.0%	0	0.0%	0	0.0%	3	18.8%		
Block 6051	0	0.0%	4	5.7%	3	4.3%	2	2.9%		
Block 6052	1	0.2%	5	1.2%	4	1.0%	11	2.7%		
Block 6059	0	0.0%	0	0.0%	0	0.0%	1	100.0%		
Block 6060	0	0.0%	0	0.0%	0	0.0%	0	0.0%		
Tract 9904	11	0.4%	17	0.6%	18	0.6%	560	18.3%	422	13.8%
Block 1000	0	0.0%	0	0.0%	0	0.0%	14	8.8%		
Block 1001	0	0.0%	0	0.0%	0	0.0%	0	0.0%		
Block 1002	0	0.0%	0	0.0%	0	0.0%	0	0.0%		

Bardstown Study Area Census Data

	Total	White Alone	White Alone	Black or African American alone	Black or African American alone	American Indian and Alaska Native alone	American Indian and Alaska Native alone	Asian alone	Asian alone	Native Hawaiian and other Pacific Islander alone	Native Hawaiian and other Pacific Islander alone
Block 1003	21	21	100.0%	0	0.0%	0	0.0%	0	0.0%	0	0.0%
Block 1004	3	1	33.3%	1	33.3%	0	0.0%	0	0.0%	0	0.0%
Block 1005	4	4	100.0%	0	0.0%	0	0.0%	0	0.0%	0	0.0%
Block 1006	3	3	100.0%	0	0.0%	0	0.0%	0	0.0%	0	0.0%
Block 1008	88	86	97.7%	0	0.0%	0	0.0%	0	0.0%	0	0.0%
Block 1009	4	4	100.0%	0	0.0%	0	0.0%	0	0.0%	0	0.0%
Block 1010	119	76	63.9%	41	34.5%	0	0.0%	0	0.0%	0	0.0%
Block 1011	109	77	70.6%	25	22.9%	0	0.0%	0	0.0%	0	0.0%
Block 1018	3	3	100.0%	0	0.0%	0	0.0%	0	0.0%	0	0.0%
Block 1020	6	6	100.0%	0	0.0%	0	0.0%	0	0.0%	0	0.0%
Block 1023	14	14	100.0%	0	0.0%	0	0.0%	0	0.0%	0	0.0%
Block 1024	8	8	100.0%	0	0.0%	0	0.0%	0	0.0%	0	0.0%
Block 1025	18	18	100.0%	0	0.0%	0	0.0%	0	0.0%	0	0.0%
Block 1026	25	25	100.0%	0	0.0%	0	0.0%	0	0.0%	0	0.0%
Block 1027	7	7	100.0%	0	0.0%	0	0.0%	0	0.0%	0	0.0%
Block 1029	11	11	100.0%	0	0.0%	0	0.0%	0	0.0%	0	0.0%
Block 1030	28	28	100.0%	0	0.0%	0	0.0%	0	0.0%	0	0.0%
Block 1031	16	16	100.0%	0	0.0%	0	0.0%	0	0.0%	0	0.0%
Block 1032	3	0	0.0%	0	0.0%	0	0.0%	0	0.0%	0	0.0%
Block 1033	16	16	100.0%	0	0.0%	0	0.0%	0	0.0%	0	0.0%
Block 1034	4	4	100.0%	0	0.0%	0	0.0%	0	0.0%	0	0.0%
Block 1036	4	0	0.0%	4	100.0%	0	0.0%	0	0.0%	0	0.0%
Block 1037	3	3	100.0%	0	0.0%	0	0.0%	0	0.0%	0	0.0%
Block 1044	35	23	65.7%	12	34.3%	0	0.0%	0	0.0%	0	0.0%
Block 1045	17	17	100.0%	0	0.0%	0	0.0%	0	0.0%	0	0.0%
Block 1046	29	28	96.6%	1	3.4%	0	0.0%	0	0.0%	0	0.0%
Block 1047	55	20	36.4%	34	61.8%	0	0.0%	0	0.0%	0	0.0%
Block 2001	11	11	100.0%	0	0.0%	0	0.0%	0	0.0%	0	0.0%
Block 2002	7	7	100.0%	0	0.0%	0	0.0%	0	0.0%	0	0.0%
Block 2003	14	12	85.7%	0	0.0%	0	0.0%	0	0.0%	0	0.0%
Block 2004	8	8	100.0%	0	0.0%	0	0.0%	0	0.0%	0	0.0%
Block 2005	8	8	100.0%	0	0.0%	0	0.0%	0	0.0%	0	0.0%
Block 2006	34	29	85.3%	5	14.7%	0	0.0%	0	0.0%	0	0.0%

Bardstown Study Area Census Data

	Some other race alone	Some other race alone	Two or more races	Two or more races	Hispanic or Latino Origin	Hispanic or Latino Origin	Persons 65 and Over	Persons 65 and Over	Persons Below Poverty Level	Persons Below Poverty Level
Block 1003	0	0.0%	0	0.0%	0	0.0%	7	33.3%		
Block 1004	1	33.3%	0	0.0%	0	0.0%	0	0.0%		
Block 1005	0	0.0%	0	0.0%	0	0.0%	1	25.0%		
Block 1006	0	0.0%	0	0.0%	0	0.0%	2	66.7%		
Block 1008	0	0.0%	2	2.3%	0	0.0%	27	30.7%		
Block 1009	0	0.0%	0	0.0%	0	0.0%	1	25.0%		
Block 1010	0	0.0%	2	1.7%	2	1.7%	15	12.6%		
Block 1011	7	6.4%	0	0.0%	6	5.5%	13	11.9%		
Block 1018	0	0.0%	0	0.0%	3	100.0%	0	0.0%		
Block 1020	0	0.0%	0	0.0%	0	0.0%	3	50.0%		
Block 1023	0	0.0%	0	0.0%	0	0.0%	4	28.6%		
Block 1024	0	0.0%	0	0.0%	0	0.0%	0	0.0%		
Block 1025	0	0.0%	0	0.0%	0	0.0%	2	11.1%		
Block 1026	0	0.0%	0	0.0%	0	0.0%	3	12.0%		
Block 1027	0	0.0%	0	0.0%	0	0.0%	2	28.6%		
Block 1029	0	0.0%	0	0.0%	0	0.0%	0	0.0%		
Block 1030	0	0.0%	0	0.0%	0	0.0%	0	0.0%		
Block 1031	0	0.0%	0	0.0%	0	0.0%	0	0.0%		
Block 1032	0	0.0%	3	100.0%	0	0.0%	0	0.0%		
Block 1033	0	0.0%	0	0.0%	0	0.0%	0	0.0%		
Block 1034	0	0.0%	0	0.0%	0	0.0%	0	0.0%		
Block 1036	0	0.0%	0	0.0%	0	0.0%	0	0.0%		
Block 1037	0	0.0%	0	0.0%	0	0.0%	1	33.3%		
Block 1044	0	0.0%	0	0.0%	0	0.0%	5	14.3%		
Block 1045	0	0.0%	0	0.0%	0	0.0%	6	35.3%		
Block 1046	0	0.0%	0	0.0%	0	0.0%	7	24.1%		
Block 1047	0	0.0%	1	1.8%	2	3.6%	10	18.2%		
Block 2001	0	0.0%	0	0.0%	0	0.0%	1	9.1%		
Block 2002	0	0.0%	0	0.0%	0	0.0%	1	14.3%		
Block 2003	2	14.3%	0	0.0%	2	14.3%	1	7.1%		
Block 2004	0	0.0%	0	0.0%	0	0.0%	4	50.0%		
Block 2005	0	0.0%	0	0.0%	0	0.0%	0	0.0%		
Block 2006	0	0.0%	0	0.0%	0	0.0%	5	14.7%		

Bardstown Study Area Census Data

	Total	White Alone	White Alone	Black or African American alone	Black or African American alone	American Indian and Alaska Native alone	American Indian and Alaska Native alone	Asian alone	Asian alone	Native Hawaiian and other Pacific Islander alone	Native Hawaiian and other Pacific Islander alone
Block 2007	62	13	21.0%	49	79.0%	0	0.0%	0	0.0%	0	0.0%
Block 2008	168	141	83.9%	23	13.7%	0	0.0%	2	1.2%	0	0.0%
Block 2009	40	8	20.0%	32	80.0%	0	0.0%	0	0.0%	0	0.0%
Block 2010	60	55	91.7%	5	8.3%	0	0.0%	0	0.0%	0	0.0%
Block 2011	126	126	100.0%	0	0.0%	0	0.0%	0	0.0%	0	0.0%
Block 2012	43	39	90.7%	4	9.3%	0	0.0%	0	0.0%	0	0.0%
Block 2013	22	22	100.0%	0	0.0%	0	0.0%	0	0.0%	0	0.0%
Block 2015	30	30	100.0%	0	0.0%	0	0.0%	0	0.0%	0	0.0%
Block 2016	33	33	100.0%	0	0.0%	0	0.0%	0	0.0%	0	0.0%
Block 2017	41	25	61.0%	6	14.6%	0	0.0%	9	22.0%	0	0.0%
Block 2018	67	57	85.1%	0	0.0%	0	0.0%	10	14.9%	0	0.0%
Block 2019	72	54	75.0%	9	12.5%	0	0.0%	9	12.5%	0	0.0%
Block 3000	402	336	83.6%	56	13.9%	0	0.0%	7	1.7%	0	0.0%
Block 3001	84	72	85.7%	8	9.5%	0	0.0%	4	4.8%	0	0.0%
Block 3002	26	25	96.2%	0	0.0%	0	0.0%	1	3.8%	0	0.0%
Block 3003	50	47	94.0%	3	6.0%	0	0.0%	0	0.0%	0	0.0%
Block 3004	41	41	100.0%	0	0.0%	0	0.0%	0	0.0%	0	0.0%
Block 3005	37	37	100.0%	0	0.0%	0	0.0%	0	0.0%	0	0.0%
Block 3006	21	21	100.0%	0	0.0%	0	0.0%	0	0.0%	0	0.0%
Block 3007	6	6	100.0%	0	0.0%	0	0.0%	0	0.0%	0	0.0%
Block 3008	20	20	100.0%	0	0.0%	0	0.0%	0	0.0%	0	0.0%
Block 3009	14	14	100.0%	0	0.0%	0	0.0%	0	0.0%	0	0.0%
Block 3010	2	2	100.0%	0	0.0%	0	0.0%	0	0.0%	0	0.0%
Block 3011	170	169	99.4%	0	0.0%	0	0.0%	0	0.0%	0	0.0%
Block 3012	78	72	92.3%	6	7.7%	0	0.0%	0	0.0%	0	0.0%
Block 3013	62	57	91.9%	1	1.6%	2	3.2%	0	0.0%	0	0.0%
Block 3014	51	48	94.1%	3	5.9%	0	0.0%	0	0.0%	0	0.0%
Block 3016	4	4	100.0%	0	0.0%	0	0.0%	0	0.0%	0	0.0%
Block 3017	72	72	100.0%	0	0.0%	0	0.0%	0	0.0%	0	0.0%
Block 3019	61	60	98.4%	0	0.0%	0	0.0%	0	0.0%	0	0.0%
Block 3021	3	3	100.0%	0	0.0%	0	0.0%	0	0.0%	0	0.0%
Block 3022	4	4	100.0%	0	0.0%	0	0.0%	0	0.0%	0	0.0%
Block 3023	90	73	81.1%	14	15.6%	0	0.0%	3	3.3%	0	0.0%

Bardstown Study Area Census Data

	Some other race alone	Some other race alone	Two or more races	Two or more races	Hispanic or Latino Origin	Hispanic or Latino Origin	Persons 65 and Over	Persons 65 and Over	Persons Below Poverty Level	Persons Below Poverty Level
Block 2007	0	0.0%	0	0.0%	0	0.0%	13	21.0%		
Block 2008	0	0.0%	2	1.2%	0	0.0%	15	8.9%		
Block 2009	0	0.0%	0	0.0%	0	0.0%	9	22.5%		
Block 2010	0	0.0%	0	0.0%	0	0.0%	15	25.0%		
Block 2011	0	0.0%	0	0.0%	1	0.8%	42	33.3%		
Block 2012	0	0.0%	0	0.0%	0	0.0%	6	14.0%		
Block 2013	0	0.0%	0	0.0%	0	0.0%	13	59.1%		
Block 2015	0	0.0%	0	0.0%	0	0.0%	9	30.0%		
Block 2016	0	0.0%	0	0.0%	0	0.0%	10	30.3%		
Block 2017	0	0.0%	1	2.4%	0	0.0%	19	46.3%		
Block 2018	0	0.0%	0	0.0%	0	0.0%	13	19.4%		
Block 2019	0	0.0%	0	0.0%	0	0.0%	12	16.7%		
Block 3000	0	0.0%	3	0.7%	2	0.5%	125	31.1%		
Block 3001	0	0.0%	0	0.0%	2	2.4%	7	8.3%		
Block 3002	0	0.0%	0	0.0%	0	0.0%	3	11.5%		
Block 3003	0	0.0%	0	0.0%	0	0.0%	10	20.0%		
Block 3004	0	0.0%	0	0.0%	0	0.0%	8	19.5%		
Block 3005	0	0.0%	0	0.0%	0	0.0%	9	24.3%		
Block 3006	0	0.0%	0	0.0%	2	9.5%	9	42.9%		
Block 3007	0	0.0%	0	0.0%	0	0.0%	2	33.3%		
Block 3008	0	0.0%	0	0.0%	0	0.0%	2	10.0%		
Block 3009	0	0.0%	0	0.0%	0	0.0%	4	28.6%		
Block 3010	0	0.0%	0	0.0%	0	0.0%	0	0.0%		
Block 3011	1	0.6%	0	0.0%	1	0.6%	5	2.9%		
Block 3012	0	0.0%	0	0.0%	0	0.0%	10	12.8%		
Block 3013	0	0.0%	2	3.2%	2	3.2%	10	16.1%		
Block 3014	0	0.0%	0	0.0%	0	0.0%	7	13.7%		
Block 3016	0	0.0%	0	0.0%	0	0.0%	0	0.0%		
Block 3017	0	0.0%	0	0.0%	0	0.0%	14	19.4%		
Block 3019	0	0.0%	1	1.6%	0	0.0%	8	13.1%		
Block 3021	0	0.0%	0	0.0%	0	0.0%	0	0.0%		
Block 3022	0	0.0%	0	0.0%	0	0.0%	0	0.0%		
Block 3023	0	0.0%	0	0.0%	0	0.0%	6	6.7%		

Bardstown Study Area Census Data

	Total	White Alone	White Alone	Black or African American alone	Black or African American alone	American Indian and Alaska Native alone	American Indian and Alaska Native alone	Asian alone	Asian alone	Native Hawaiian and other Pacific Islander alone	Native Hawaiian and other Pacific Islander alone
Block 3024	39	39	100.0%	0	0.0%	0	0.0%	0	0.0%	0	0.0%
Block 3027	5	5	100.0%	0	0.0%	0	0.0%	0	0.0%	0	0.0%
Block 3029	39	35	89.7%	0	0.0%	0	0.0%	4	10.3%	0	0.0%
Block 3030	4	4	100.0%	0	0.0%	0	0.0%	0	0.0%	0	0.0%
Block 3031	7	7	100.0%	0	0.0%	0	0.0%	0	0.0%	0	0.0%
Tract 9905	5,072	4,965	97.9%	56	1.1%	9	0.2%	17	0.3%	2	0.0%
Block 1000	17	16	94.1%	0	0.0%	0	0.0%	1	5.9%	0	0.0%
Block 1002	27	22	81.5%	5	18.5%	0	0.0%	0	0.0%	0	0.0%
Block 1003	38	36	94.7%	2	5.3%	0	0.0%	0	0.0%	0	0.0%
Block 1004	32	32	100.0%	0	0.0%	0	0.0%	0	0.0%	0	0.0%
Block 1006	60	60	100.0%	0	0.0%	0	0.0%	0	0.0%	0	0.0%
Block 1007	163	157	96.3%	4	2.5%	1	0.6%	1	0.6%	0	0.0%
Block 1008	47	43	91.5%	4	8.5%	0	0.0%	0	0.0%	0	0.0%
Block 1010	105	98	93.3%	6	5.7%	0	0.0%	0	0.0%	0	0.0%
Block 1011	120	120	100.0%	0	0.0%	0	0.0%	0	0.0%	0	0.0%
Block 1012	28	28	100.0%	0	0.0%	0	0.0%	0	0.0%	0	0.0%
Block 1014	140	139	99.3%	0	0.0%	0	0.0%	0	0.0%	0	0.0%
Block 1016	3	3	100.0%	0	0.0%	0	0.0%	0	0.0%	0	0.0%
Block 1018	192	191	99.5%	0	0.0%	1	0.5%	0	0.0%	0	0.0%
Block 1019	86	82	95.3%	0	0.0%	0	0.0%	0	0.0%	1	1.2%
Block 1020	3	3	100.0%	0	0.0%	0	0.0%	0	0.0%	0	0.0%
Block 1021	48	46	95.8%	0	0.0%	0	0.0%	0	0.0%	0	0.0%
Block 1022	55	55	100.0%	0	0.0%	0	0.0%	0	0.0%	0	0.0%
Block 1023	22	22	100.0%	0	0.0%	0	0.0%	0	0.0%	0	0.0%
Block 1027	2	2	100.0%	0	0.0%	0	0.0%	0	0.0%	0	0.0%
Block 1029	4	4	100.0%	0	0.0%	0	0.0%	0	0.0%	0	0.0%
Block 1030	20	20	100.0%	0	0.0%	0	0.0%	0	0.0%	0	0.0%
Block 1031	8	8	100.0%	0	0.0%	0	0.0%	0	0.0%	0	0.0%
Block 1034	8	8	100.0%	0	0.0%	0	0.0%	0	0.0%	0	0.0%
Block 1035	7	7	100.0%	0	0.0%	0	0.0%	0	0.0%	0	0.0%
Block 1036	11	11	100.0%	0	0.0%	0	0.0%	0	0.0%	0	0.0%
Block 1037	10	9	90.0%	0	0.0%	0	0.0%	0	0.0%	0	0.0%

Bardstown Study Area Census Data

	Some other race alone	Some other race alone	Two or more races	Two or more races	Hispanic or Latino Origin	Hispanic or Latino Origin	Persons 65 and Over	Persons 65 and Over	Persons Below Poverty Level	Persons Below Poverty Level
Block 3024	0	0.0%	0	0.0%	0	0.0%	4	10.3%		
Block 3027	0	0.0%	0	0.0%	0	0.0%	0	0.0%		
Block 3029	0	0.0%	0	0.0%	0	0.0%	4	10.3%		
Block 3030	0	0.0%	0	0.0%	0	0.0%	0	0.0%		
Block 3031	0	0.0%	0	0.0%	0	0.0%	2	28.6%		
Tract 9905	8	0.2%	15	0.3%	0	0.0%	347	6.8%	255	5.0%
Block 1000	0	0.0%	0	0.0%	7	41.2%	1	5.9%		
Block 1002	0	0.0%	0	0.0%	0	0.0%	3	11.1%		
Block 1003	0	0.0%	0	0.0%	0	0.0%	3	7.9%		
Block 1004	0	0.0%	0	0.0%	0	0.0%	10	31.3%		
Block 1006	0	0.0%	0	0.0%	0	0.0%	8	13.3%		
Block 1007	0	0.0%	0	0.0%	0	0.0%	9	5.5%		
Block 1008	0	0.0%	0	0.0%	0	0.0%	0	0.0%		
Block 1010	1	1.0%	0	0.0%	2	1.9%	4	3.8%		
Block 1011	0	0.0%	0	0.0%	0	0.0%	0	0.0%		
Block 1012	0	0.0%	0	0.0%	0	0.0%	4	14.3%		
Block 1014	0	0.0%	1	0.7%	2	1.4%	6	4.3%		
Block 1016	0	0.0%	0	0.0%	0	0.0%	0	0.0%		
Block 1018	0	0.0%	0	0.0%	3	1.6%	13	6.8%		
Block 1019	0	0.0%	3	3.5%	1	1.2%	7	8.1%		
Block 1020	0	0.0%	0	0.0%	0	0.0%	1	33.3%		
Block 1021	0	0.0%	2	4.2%	0	0.0%	2	4.2%		
Block 1022	0	0.0%	0	0.0%	0	0.0%	0	0.0%		
Block 1023	0	0.0%	0	0.0%	0	0.0%	3	13.6%		
Block 1027	0	0.0%	0	0.0%	0	0.0%	0	0.0%		
Block 1029	0	0.0%	0	0.0%	0	0.0%	0	0.0%		
Block 1030	0	0.0%	0	0.0%	0	0.0%	0	0.0%		
Block 1031	0	0.0%	0	0.0%	0	0.0%	1	12.5%		
Block 1034	0	0.0%	0	0.0%	0	0.0%	2	25.0%		
Block 1035	0	0.0%	0	0.0%	0	0.0%	0	0.0%		
Block 1036	0	0.0%	0	0.0%	0	0.0%	2	18.2%		
Block 1037	0	0.0%	1	10.0%	0	0.0%	0	0.0%		

Bardstown Study Area Census Data

	Total	White Alone	White Alone	Black or African American alone	Black or African American alone	American Indian and Alaska Native alone	American Indian and Alaska Native alone	Asian alone	Asian alone	Native Hawaiian and other Pacific Islander alone	Native Hawaiian and other Pacific Islander alone
Block 1038	5	0	0.0%	5	100.0%	0	0.0%	0	0.0%	0	0.0%
Block 1039	13	13	100.0%	0	0.0%	0	0.0%	0	0.0%	0	0.0%
Block 1040	4	4	100.0%	0	0.0%	0	0.0%	0	0.0%	0	0.0%
Block 1041	449	435	96.9%	9	2.0%	0	0.0%	4	0.9%	0	0.0%
Block 1042	28	28	100.0%	0	0.0%	0	0.0%	0	0.0%	0	0.0%
Block 1044	32	32	100.0%	0	0.0%	0	0.0%	0	0.0%	0	0.0%
Block 1045	58	58	100.0%	0	0.0%	0	0.0%	0	0.0%	0	0.0%
Block 1046	328	324	98.8%	4	1.2%	0	0.0%	0	0.0%	0	0.0%
Block 1047	2	2	100.0%	0	0.0%	0	0.0%	0	0.0%	0	0.0%
Block 1048	15	15	100.0%	0	0.0%	0	0.0%	0	0.0%	0	0.0%
Block 1049	200	188	94.0%	3	1.5%	2	1.0%	0	0.0%	0	0.0%
Block 1051	2	2	100.0%	0	0.0%	0	0.0%	0	0.0%	0	0.0%
Block 1053	188	187	99.5%	1	0.5%	0	0.0%	0	0.0%	0	0.0%
Block 1054	34	34	100.0%	0	0.0%	0	0.0%	0	0.0%	0	0.0%
Block 1055	5	5	100.0%	0	0.0%	0	0.0%	0	0.0%	0	0.0%
Block 1057	32	32	100.0%	0	0.0%	0	0.0%	0	0.0%	0	0.0%
Block 1058	42	42	100.0%	0	0.0%	0	0.0%	0	0.0%	0	0.0%
Block 1059	6	6	100.0%	0	0.0%	0	0.0%	0	0.0%	0	0.0%
Block 2000	139	131	94.2%	5	3.6%	3	2.2%	0	0.0%	0	0.0%
Block 2001	80	77	96.3%	3	3.8%	0	0.0%	0	0.0%	0	0.0%
Block 2002	269	262	97.4%	0	0.0%	0	0.0%	6	2.2%	0	0.0%
Block 2003	259	256	98.8%	0	0.0%	0	0.0%	1	0.4%	0	0.0%
Block 2005	172	170	98.8%	2	1.2%	0	0.0%	0	0.0%	0	0.0%
Block 2006	18	18	100.0%	0	0.0%	0	0.0%	0	0.0%	0	0.0%
Block 2007	34	34	100.0%	0	0.0%	0	0.0%	0	0.0%	0	0.0%
Block 2009	171	170	99.4%	1	0.6%	0	0.0%	0	0.0%	0	0.0%
Block 2012	224	224	100.0%	0	0.0%	0	0.0%	0	0.0%	0	0.0%
Block 2013	34	34	100.0%	0	0.0%	0	0.0%	0	0.0%	0	0.0%
Block 2014	54	53	98.1%	0	0.0%	0	0.0%	0	0.0%	0	0.0%
Block 2015	16	16	100.0%	0	0.0%	0	0.0%	0	0.0%	0	0.0%
Block 2018	9	9	100.0%	0	0.0%	0	0.0%	0	0.0%	0	0.0%
Block 2019	209	206	98.6%	0	0.0%	0	0.0%	3	1.4%	0	0.0%
Block 2020	148	146	98.6%	0	0.0%	0	0.0%	0	0.0%	0	0.0%

Bardstown Study Area Census Data

	Some other race alone	Some other race alone	Two or more races	Two or more races	Hispanic or Latino Origin	Hispanic or Latino Origin	Persons 65 and Over	Persons 65 and Over	Persons Below Poverty Level	Persons Below Poverty Level
Block 1038	0	0.0%	0	0.0%	0	0.0%	0	0.0%		
Block 1039	0	0.0%	0	0.0%	0	0.0%	1	7.7%		
Block 1040	0	0.0%	0	0.0%	0	0.0%	0	0.0%		
Block 1041	0	0.0%	1	0.2%	3	0.7%	27	6.0%		
Block 1042	0	0.0%	0	0.0%	0	0.0%	2	7.1%		
Block 1044	0	0.0%	0	0.0%	0	0.0%	1	3.1%		
Block 1045	0	0.0%	0	0.0%	0	0.0%	3	5.2%		
Block 1046	0	0.0%	0	0.0%	1	0.3%	18	5.5%		
Block 1047	0	0.0%	0	0.0%	0	0.0%	1	50.0%		
Block 1048	0	0.0%	0	0.0%	0	0.0%	2	13.3%		
Block 1049	7	3.5%	0	0.0%	11	5.5%	23	11.5%		
Block 1051	0	0.0%	0	0.0%	0	0.0%	2	100.0%		
Block 1053	0	0.0%	0	0.0%	0	0.0%	10	5.3%		
Block 1054	0	0.0%	0	0.0%	0	0.0%	5	14.7%		
Block 1055	0	0.0%	0	0.0%	0	0.0%	0	0.0%		
Block 1057	0	0.0%	0	0.0%	0	0.0%	0	0.0%		
Block 1058	0	0.0%	0	0.0%	0	0.0%	0	0.0%		
Block 1059	0	0.0%	0	0.0%	0	0.0%	1	16.7%		
Block 2000	0	0.0%	0	0.0%	2	1.4%	6	4.3%		
Block 2001	0	0.0%	0	0.0%	0	0.0%	1	1.3%		
Block 2002	0	0.0%	1	0.4%	2	0.7%	23	8.6%		
Block 2003	0	0.0%	2	0.8%	1	0.4%	18	6.9%		
Block 2005	0	0.0%	0	0.0%	0	0.0%	22	12.8%		
Block 2006	0	0.0%	0	0.0%	0	0.0%	0	0.0%		
Block 2007	0	0.0%	0	0.0%	0	0.0%	3	8.8%		
Block 2009	0	0.0%	0	0.0%	0	0.0%	12	7.0%		
Block 2012	0	0.0%	0	0.0%	2	0.9%	16	7.1%		
Block 2013	0	0.0%	0	0.0%	0	0.0%	5	14.7%		
Block 2014	0	0.0%	1	1.9%	0	0.0%	0	0.0%		
Block 2015	0	0.0%	0	0.0%	0	0.0%	0	0.0%		
Block 2018	0	0.0%	0	0.0%	0	0.0%	1	11.1%		
Block 2019	0	0.0%	0	0.0%	0	0.0%	11	5.3%		
Block 2020	0	0.0%	2	1.4%	0	0.0%	11	7.4%		

Bardstown Study Area Census Data

	Total	White Alone	White Alone	Black or African American alone	Black or African American alone	American Indian and Alaska Native alone	American Indian and Alaska Native alone	Asian alone	Asian alone	Native Hawaiian and other Pacific Islander alone	Native Hawaiian and other Pacific Islander alone
Block 2021	106	106	100.0%	0	0.0%	0	0.0%	0	0.0%	0	0.0%
Block 2022	51	49	96.1%	1	2.0%	0	0.0%	0	0.0%	0	0.0%
Block 2023	110	108	98.2%	0	0.0%	1	0.9%	0	0.0%	1	0.9%
Block 2025	55	55	100.0%	0	0.0%	0	0.0%	0	0.0%	0	0.0%
Block 2026	50	49	98.0%	0	0.0%	0	0.0%	1	2.0%	0	0.0%
Block 2027	165	163	98.8%	1	0.6%	1	0.6%	0	0.0%	0	0.0%

Bardstown Study Area Census Data

	Some other race alone	Some other race alone	Two or more races	Two or more races	Hispanic or Latino Origin	Hispanic or Latino Origin	Persons 65 and Over	Persons 65 and Over	Persons Below Poverty Level	Persons Below Poverty Level
Block 2021	0	0.0%	0	0.0%	0	0.0%	14	13.2%		
Block 2022	0	0.0%	1	2.0%	0	0.0%	5	9.8%		
Block 2023	0	0.0%	0	0.0%	0	0.0%	1	0.9%		
Block 2025	0	0.0%	0	0.0%	0	0.0%	4	7.3%		
Block 2026	0	0.0%	0	0.0%	0	0.0%	7	14.0%		
Block 2027	0	0.0%	0	0.0%	1	0.6%	12	7.3%		