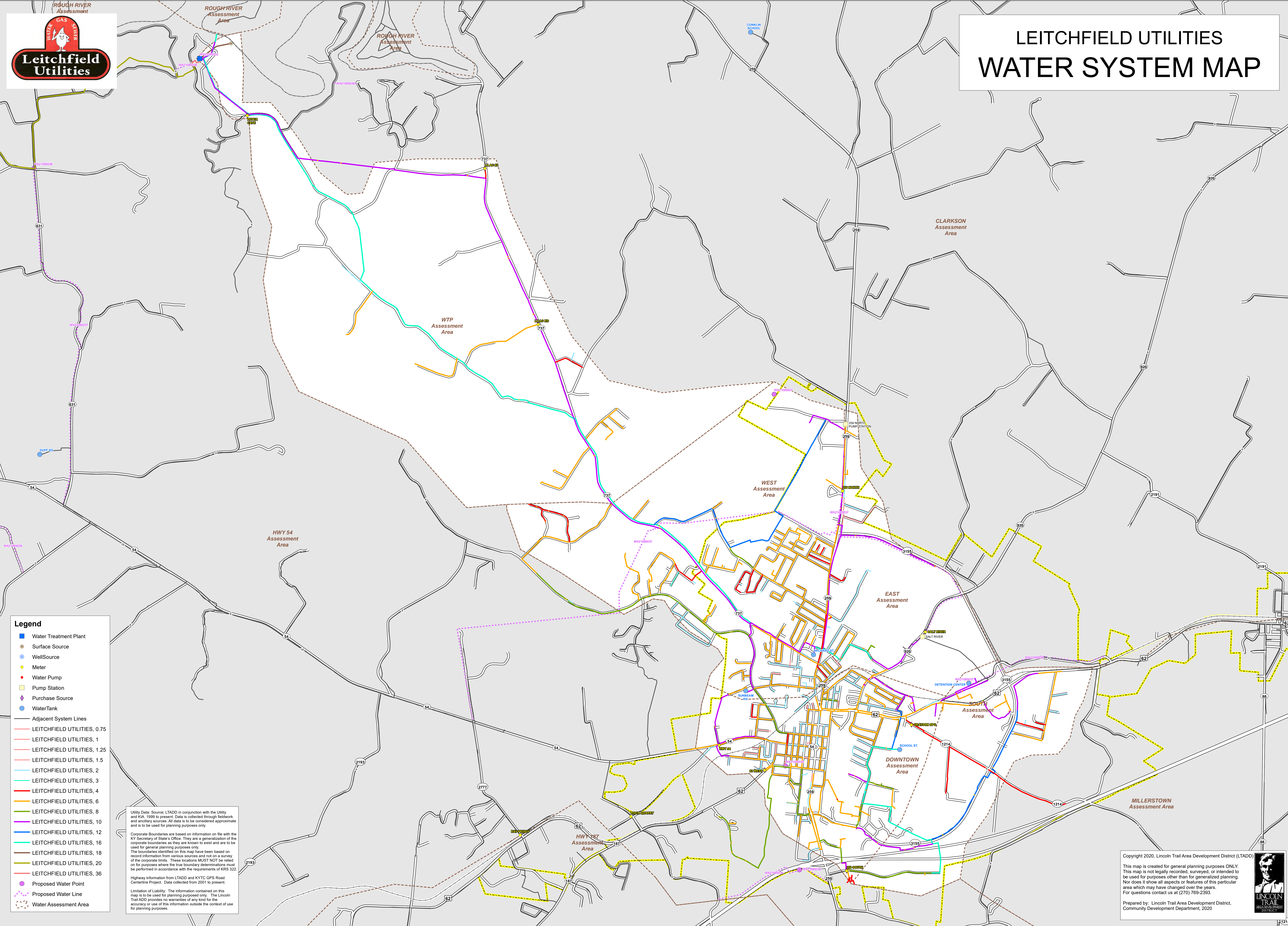




LEITCHFIELD UTILITIES WATER SYSTEM MAP



Legend

- Water Treatment Plant
- Surface Source
- WellSource
- Meter
- Water Pump
- Pump Station
- Purchase Source
- Water Tank
- Adjacent System Lines
- LEITCHFIELD UTILITIES, 0.75
- LEITCHFIELD UTILITIES, 1
- LEITCHFIELD UTILITIES, 1.25
- LEITCHFIELD UTILITIES, 1.5
- LEITCHFIELD UTILITIES, 2
- LEITCHFIELD UTILITIES, 3
- LEITCHFIELD UTILITIES, 4
- LEITCHFIELD UTILITIES, 6
- LEITCHFIELD UTILITIES, 8
- LEITCHFIELD UTILITIES, 10
- LEITCHFIELD UTILITIES, 12
- LEITCHFIELD UTILITIES, 16
- LEITCHFIELD UTILITIES, 18
- LEITCHFIELD UTILITIES, 20
- LEITCHFIELD UTILITIES, 36
- Proposed Water Point
- Proposed Water Line
- Water Assessment Area

Utility Data Source: LTADD in conjunction with the Utility and KIA, 1999 to present. Data is collected through fieldwork and ancillary sources. All data is to be considered approximate and is to be used for planning purposes only.

Corporate Boundaries are based on information on file with the KY Secretary of State's Office. They are a generalization of the corporate boundaries as they are known to exist and are to be used for general planning purposes only.

The boundaries identified on this map have been based on record information from various sources and not on a survey of the corporate limits. These locations MUST NOT be relied on for purposes where the true boundary determinations must be performed in accordance with the requirements of KRS 322.

Highway information from LTADD and KYTC GPS Road Centerline Project. Data collected from 2001 to present.

Limitation of Liability: The information contained on this map is to be used for planning purposes only. The Lincoln Trail A&D provides no warranties of any kind for the accuracy or use of this information outside the context of use for planning purposes.

Copyright 2020, Lincoln Trail Area Development District (LTADD)

This map is created for general planning purposes ONLY. This map is not legally recorded, surveyed, or intended to be used for purposes other than for generalized planning. Nor does it show all aspects or features of this particular area which may have changed over the years. For questions contact us at (270) 769-2353.

Prepared by: Lincoln Trail Area Development District, Community Development Department, 2020

